

Updated - April 2024

The technical documentation of the venue that include stage, sound or lighting equipment is not part of the contract. Contact the technical department for an update on

Informations Générales / General Informations
House

Seating	Normal	
seating capacity for booking	747	
house seats	8	
Total	755	
House dimensions		
from house curtain to last row of orchestra	22,63m	74'-3"

Artists entrance
1400 St.Urbain street
Loading dock
1410 St.Urbain street

At street level, the stage of the theater is located two levels above the street.
Sets, costumes and properties have to be transported to the stage by elevator.

Loading platform dimensions

width	9,58 m	31'-5"
length	13,11 m	43'-0"
height	3,05 m	10'-0"
height of platform	1,09 m	3'-7"

Elevator

Maximum allowed weight	6,8 T	15 000 lbs
width	3,48 m	11'-5"
length	7,77 m	25'-6"
height	3,48 m	11'-5"

Elevator door

width	2,97 m	9'-9"
length	3,00 m	9'-10"

Due to the location of elevator door, all objects (sets, crates, etc...) must not exceed 23 feet (7 meters).

Production office

 In the dressing room area (stage level) 1 person
telephone :

T02 005
514-285-4326

Dressing rooms
Level 2, stage level

1 person toilet - shower	loge 1
2 persons toilet - shower	loge 2
3 persons toilet - shower	loge 3
3 persons toilet - shower	loge 4
3 persons toilet - shower	loge 5
4 persons toilet - shower	loge 6

Level 1

3 persons - toilets and showers	Large dressing room
---------------------------------	---------------------

Wardrobe room

room located at stage level
length
width

3,96m	13'-0"
4,57m	15'-0"

1	sink
1	washing machine
1	dryer machine
1	flat iron
1	Jiffy steamer
2	quick change 8' x 8'

NB: wardrobe employees are members of IATSE local 863.

Rehearsal rooms

available upon request

Stage
Stage description and dimensions
Wings and stage area capacities
Artists and technicians

52

Stage floor

covered with black linoleum (battleship).

Allowed load on the stage floor

kg / m ²	lbs/pi ²
650	150

(2 Movable panels) Proscenium opening

maximum height
maximum width
intermediate width
minimal width

7,62m	25'-0"
16,15m	53'-6"
12,86m	42'-3"
9,45m	31'-0"

Stage dimensions

height
Total width
from center line to S.R. wall
from center line to S.L. wall

0,56 m	1'-10"
42,67m	140'-0"
22,86m	75'-0"
19,81m	65'-0"

Total depth

from house curtain to back wall
from house curtain to the edge of the stage

17,32m	56'-10"
15,70m	51'-8"
1,55m	5'-2"

Height from stage floor to linesets

clearance under fly gallery SR
clearance under fly gallery SL

10,52m	34'-4"
8,12m	26'-7"
8,12m	26'-7"

Wing space, stage right

width
length

12,40m	40'-8"
13,11m	43'-0"

Wing space, stage left

width
length

10,36m	34'-0"
10,54m	34'-7"

Orchestra pit or vomitary

width
length

3,96m	13'-0"
4,88m	16'-0"

Rigging system
Fly system :
Single purchase counterweight system.

* operated from S.R. stage level

Counterweight system takes all the space of the wall at the stage level.

 pipe's length
 number of sets *
 * maximum loading capacity

20,42m	67'-0"
40	
635 Kg	1400 lbs

* see the line plot for house hang.

 Subject to availability and billable:
 Chain hoists 1T double-brake, 100', 4,8 m/min 6
 Chain Hoist controller 1

ChainMaster	BGV D8
-------------	--------

Stage masking
House curtain

Mauve velour, on traveller.

Electrically operated from stage right.

Stage curtains (black velvet)

legs standard opening

* see the house hang

13,41m	44'-0"
--------	--------

sets of legs

6	
---	--

width

6,10m	20'-0"
-------	--------

height

8,23m	27'-0"
-------	--------

2	
---	--

width

3,05m	10'-0"
-------	--------

height

8,23m	27'-0"
-------	--------

1	
---	--

width

4,57m	15'-0"
-------	--------

height

9,14m	30'-0"
-------	--------

borders

3	
---	--

width

20,12m	66'-0"
--------	--------

height

3,66m	12'-0"
-------	--------

4	
---	--

width

20,12m	66'-0"
--------	--------

height

3,05m	10'-0"
-------	--------

2	
---	--

width

20,12m	66'-0"
--------	--------

height

2,44m	8'-0"
-------	-------

2	
---	--

width

20,12m	66'-0"
--------	--------

height

1,83m	6'-0"
-------	-------

2	
---	--

width

20,12m	66'-0"
--------	--------

height

1,22m	4'-0"
-------	-------

full back drop

1	
---	--

width

20,12m	66'-0"
--------	--------

height

8,23m	27'-0"
-------	--------

half backing (traveler)

2	
---	--

width

12,19m	40'-0"
--------	--------

height

8,23m	27'-0"
-------	--------

Germans (side curtain)

8	
---	--

width

3,96m	13'-0"
-------	--------

height

7,92m	26'-0"
-------	--------

Scrim

black

1	
---	--

width

21,34m	70'-0"
--------	--------

height

9,60m	31'-6"
-------	--------

Cyclorama

cream colored (plastic)

1	
---	--

width

21,34m	70'-0"
--------	--------

height

8,00m	26'-0"
-------	--------

Stage manager's desk

The booth is located behind the hall high up on stage left.

T04 090

public paging system (bell), house sound
telephone

514-285-4320

Tables

3	length	4'
3		6'
2		8'

Ground support systems

2	bases+pin	24" x 24" - 3 holes	on a dolly
1	adjustables 7'-12'	horizontal	
1	adjustable 6'-10'	vertical	

Lift

(battery ,ac)	1	Genie	AWP-36S
---------------	---	-------	---------

Step ladders

height:	2	1.22m	4'
	3	1.83m	6'
	2	2.43m	8'
Aluminum	1	2.43m	8'
Aluminum	1	3.04m	10'
Aluminum	2	3.66m	12'
	1	3.66m	12'
ladder	1	6,10m	20'

Black drum carpets

2	4' x 4'	carpet
2	4' x 8'	

Platforms

platforms	8	1,22 x 1,22 m	4' x 4'
legs	8	610 mm	24"
	22	406 mm	16"
	8	203 mm	8"
riser's wheels with break	2		
riser's wheels without break	2		
dress kit	4	406 mm x 2,44m	16" x 8'

Touring companies (120 / 208 volts)

* connection possibility when available	1	400 A	Stage Left
	1	400 A	Stage Left
	1	60 A	Upstage Right

Follow spot

follow spot	1	Robert Juliat	Victor	1,8kw
-------------	---	---------------	--------	-------

Stage lighting control

Main desk (in lighting booth)	1	ETC APEX 20	24,576 outputs	with MIDI, SMPTE, 2 Gadget DMX cards
Remote control	1	ETCpad		
Secondary desk (stage left)	1	ETC Ion Xe 20	12,288 outputs	
Backup system (fixed)	1	APEX Processeur	24,576 outputs	
Mobile EOS system	1	Laptop PC with gadget interface		
dimmers	438	STRAND	C-21 / 2.4 Kw	1 dimmer = 1 circuit
dimmers	48		C-21 / 6 Kw	Electronic soft patch

Fixed equipment

Box boom	ETC - Source Four			
Box boom # 1 (S.R. & S.L.)	16		19°	575 w
Box boom # 2 (S.R. & S.L.)	16		19°	575 w
Box boom # 3 (S.R. & S.L.)	16		10°	575 w
Scoop bar	16		Iris 2	1 kw

Mobile Equipments

Bodies	200	ETC	Source four	575 w
lenses available	14		10°	
	100		19°	
	70		26°	
	40		36°	
	12		50°	
	12		90°	
Strand projectors				
	20	zoom SL	15° x 32°	575 w
	12	fresnel 10"	12° x 51°	5 kw
	60	fresnel 6"	6° x 55°	1 kw
Century Lighting projectors				
	13	fresnel 6"	8° x 32°	750 w
	6	fresnel 3"	9° x 31°	125 w
Altman projectors				
Bulbs available	60	Par 64		1 kw
		Wide - Medium - Narrow - Very Narrow		
Various				
	65	Beamlite 12"	15° x 35°	1 kw
	79	Orion		1 kw

Lighting accessories

Gobo holder	25	ETC	type A	to assemble and disassemble
	25		type B	
	20		Strand	
Iris	15	ETC		
	3	Strand		
Boom	12	pipes	10'	
floor base	30	simple		
Roscolux color filters				

Sound
Touring companies (120 / 208 volts)

located stage left

60 A

Système de salle - House speaker system
Main System

Top speaker Left - Center - Right (fixed)	3	Meyer	UPQ-1P
Floor speaker L + R (fixed)	2		UPJ-1P
Floor sub-bass speaker L + R (fixed)	2		600HP

Surround System

Lateral speaker (fixed)	4	Meyer	HMS-10
Overhead speaker (fixed)	4		UPJ-1P
Rear wall speaker (fixed)	4		UPJ-1P

Stage SFX monitor

speaker	4	Meyer	UPJr-XP
speaker	4		UP4-XP
speaker	8		MM-4 XP

Delayed system (for last rows)

Outline Vegas24

Processors

	1	Meyer	D-Mitri DCP
	1		D-Mitri DWTRX
	1		D-Mitri DAO-24
	1		D-Mitri DAI-24
	1		D-Mitri DAIO-168
	1		D-Mitri DAIO-816

CueConsole

transport module	1	Meyer	MS-CC2-TP
control module	1		MS-CC2-F16

Microphones - D.I

Wireless microphones	2	Shure UR4S	UR1-SM58
	2	Shure	UR2
	2	DPA	4060
	2	DPA	4088

Wired microphones	2	AKG	C-451 EB
	2	Shure	MX418/C
	2	Neumann	KMR-81i
	1	Neumann	TLM-103
	2	Sennheiser	MKH 60
	8	Audio-Technica	AT8015
	1	Shure	SM-57
	2		SM-58S
	6		MX-393-C
	2	Klark Teknik	LBB100 active
2	Whirlwind	IMP-2	

podium / goose neck 18"

Sound studio only

House sound only

Communication

fix digital stations located in the theatre		CLEAR COM	HELIXNET
Main station (1 on stage, 1 on stage manager local)	2	HMS-4X	
Belt-pack	4	HBP-2X	
Speaker station	2	HKB-2X	S-MOUNT

Wireless intercom system

wireless intercom system	1	FreeSpeak II base II 2.4 GHz
belt pack	10	belt pack 4 channels

TV monitor

mobile with table leg	1	Samsung	40"
fixed on the stage left and right wall	2	Samsung	40"

Hearing-impaired system

DECADE	107,9 FM
--------	----------

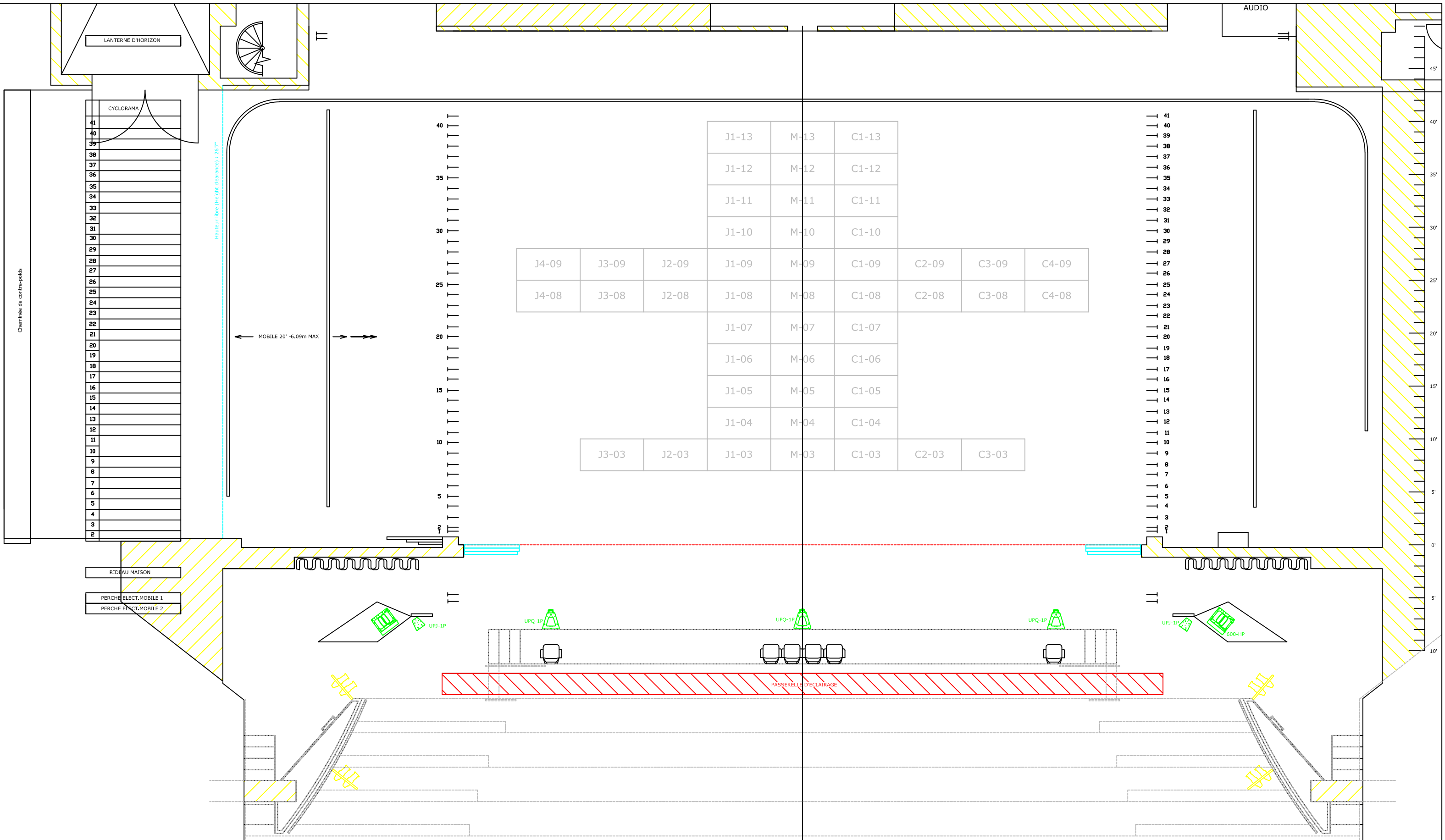
Théâtre JEAN-DUCEPPE

ACCROCHAGE STANDARD DU THÉÂTRE / HOUSE HANG

mètres meters	pieds feet	équipe set number	description	description	poids / weight kg	lbs	grandeur pieds / feet	date
			porteuse motorisée #2	motorized pipe #2	454 Kg	1000lbs	67'-0" L	
			porteuse motorisé #1	motorized pipe #1	454kg	1000lbs	67'-0" L	
<i>Vers la salle</i>			↑					
0,00	0'0"							
<i>Vers la scène</i>			↓					
			rideau d'amiante *	asbestos curtain *				
			rideau-maison *	main house curtain *				
0,30	1"	1	frise	border			66'-0" L x 10'-0" H	2011
0,51	1'-8"	2	pendrillons**	legs**			20'-0" L x 27'-0" H	2011
0,79	2'-7"	3						
1,12	3'-8"	4						
1,40	4'-7"	5						
1,70	5'-7"	6						
2,03	6'-8"	7						
2,31	7'-7"	8						
2,64	8'-8"	9	frise	border			66'-0" L x 8'-0" H	2011
2,95	9'-8"	10	pendrillons**	legs**			20'-0" L x 27'-0" H	2011
3,23	10'-7"	11						
3,56	11'-8"	12						
3,84	12'-7"	13						
4,17	13'-8"	14						
4,45	14'-7"	15						
4,78	15'-8"	16						
5,05	16'-7"	17	frise	border			66'-0" L x 10'-0" H	2011
5,38	17'-8"	18	pendrillons**	legs**			20'-0" L x 27'-0" H	2011
5,66	18'-7"	19						
5,99	19'-8"	20						
6,27	20'-7"	21						
6,60	21'-8"	22						
6,88	22'-7"	23						
7,21	23'-8"	24						
7,49	24'-7"	25						
7,82	25'-8"	26	frise	border			66'-0" L x 10'-0" H	2011
8,13	26'-8"	27	pendrillons**	legs**			20'-0" L x 27'-0" H	2011
8,43	27'-8"	28						
8,74	28'-8"	29						
9,04	29'-8"	30						
9,35	30'-8"	31						
9,65	31'-8"	32						
9,96	32'-8"	33						
10,26	33'-8"	34	frise	border			66'-0" L x 12'-0" H	2011
10,57	34'-8"	35	pendrillons**	legs**			20'-0" L x 27'-0" H	2011
10,87	35'-8"	36						
11,18	36'-8"	37						
11,48	37'-8"	38						
11,79	38'-8"	39	tulle noir	black scrim			70'-0" L x 31'-6" H	
12,07	39'-7"	40	frise	border			66'-0" L x 12'-0" H	2011
12,37	40'-7"	41	demi-fond (patience)	half backing (traveler)			40'-0" L x 27'-0" H	2011
12,64	41'-6"	n/a	cyclorama (patience)	cyclorama (traveler)			70'-0" L x 26'-0" H	

* Permanent

**Ouverture des pendrillons = 44' / standard opening = 44'



Salle / Location:

THÉÂTRE JEAN DUCEPPE
 175, rue Sainte -Catherine ouest, Montréal (Qc) H2X 1Z8

Titre /Title:

VUE DE DESSUS SCÈNE
 STAGE TOP VIEW

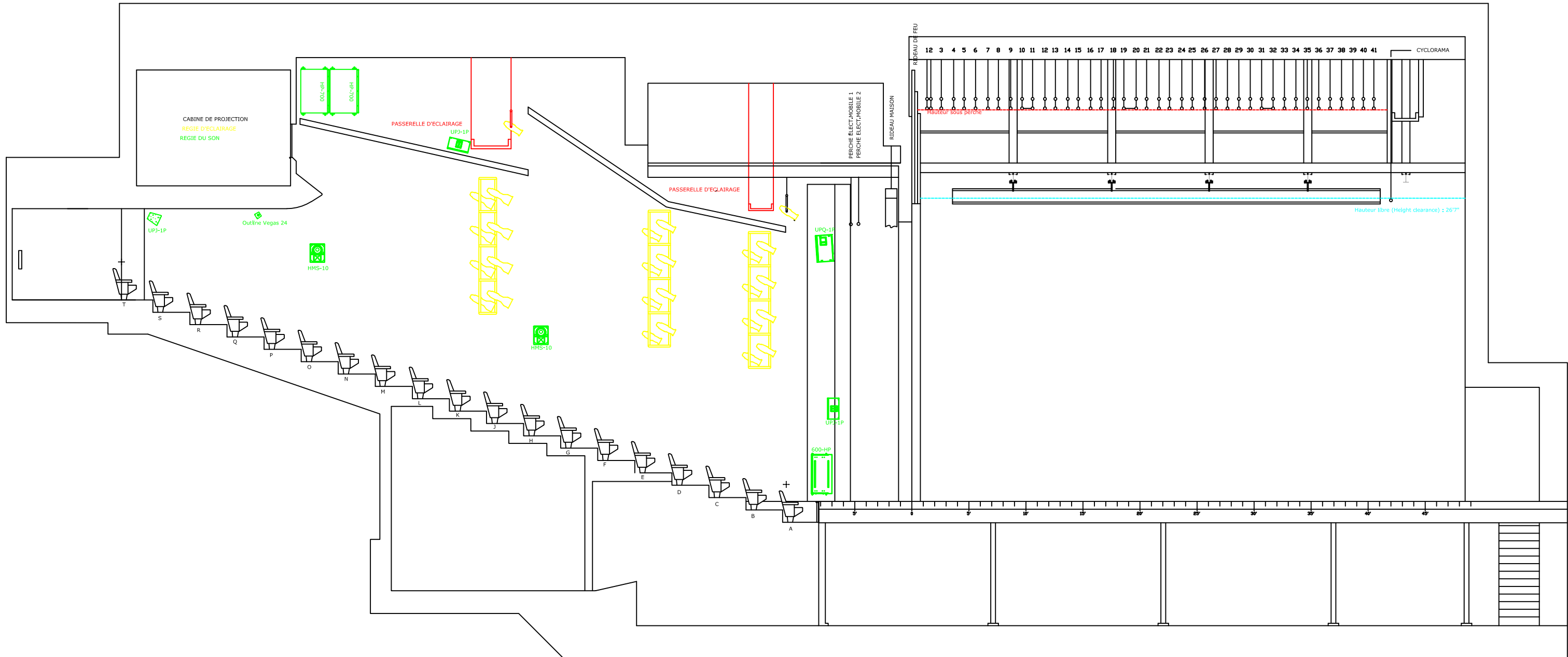
Dessin /Drawing: JD-salle&coupe.dwg
 Échelle / Scale: Voir règle - See ruler
 Date: Oct / October '17
 Format: Architecturale / Impérial
 11"x 17"

PERCHIE ELECT. MOBILE 1
PERCHIE ELECT. MOBILE 2

RIDEAU MAISON

41	CYCLORAMA
40	
39	
38	
37	
36	
35	
34	
33	
32	
31	
30	
29	
28	
27	
26	
25	
24	
23	
22	
21	
20	
19	
18	
17	
16	
15	
14	
13	
12	
11	
10	
9	
8	
7	
6	
5	
4	
3	
2	

LANTIERNE D'HORIZON



Salle / Location:

THÉÂTRE JEAN DUCEPPE
175, rue Sainte -Catherine ouest, Montréal (Qc) H2X 1Z8

Titre /Title:

**COUPE
SECTION**

Dessin /Drawing:

JD-coupe de salle.dwg

Échelle / Scale:

Voir règle - See ruler

Date:

Fev / February '19

Format:

Architecturale / Impérial

11"x 17"

20
19
18
17
16
15
14
13
12
11
10
9
8
7
6
5
4
3
2

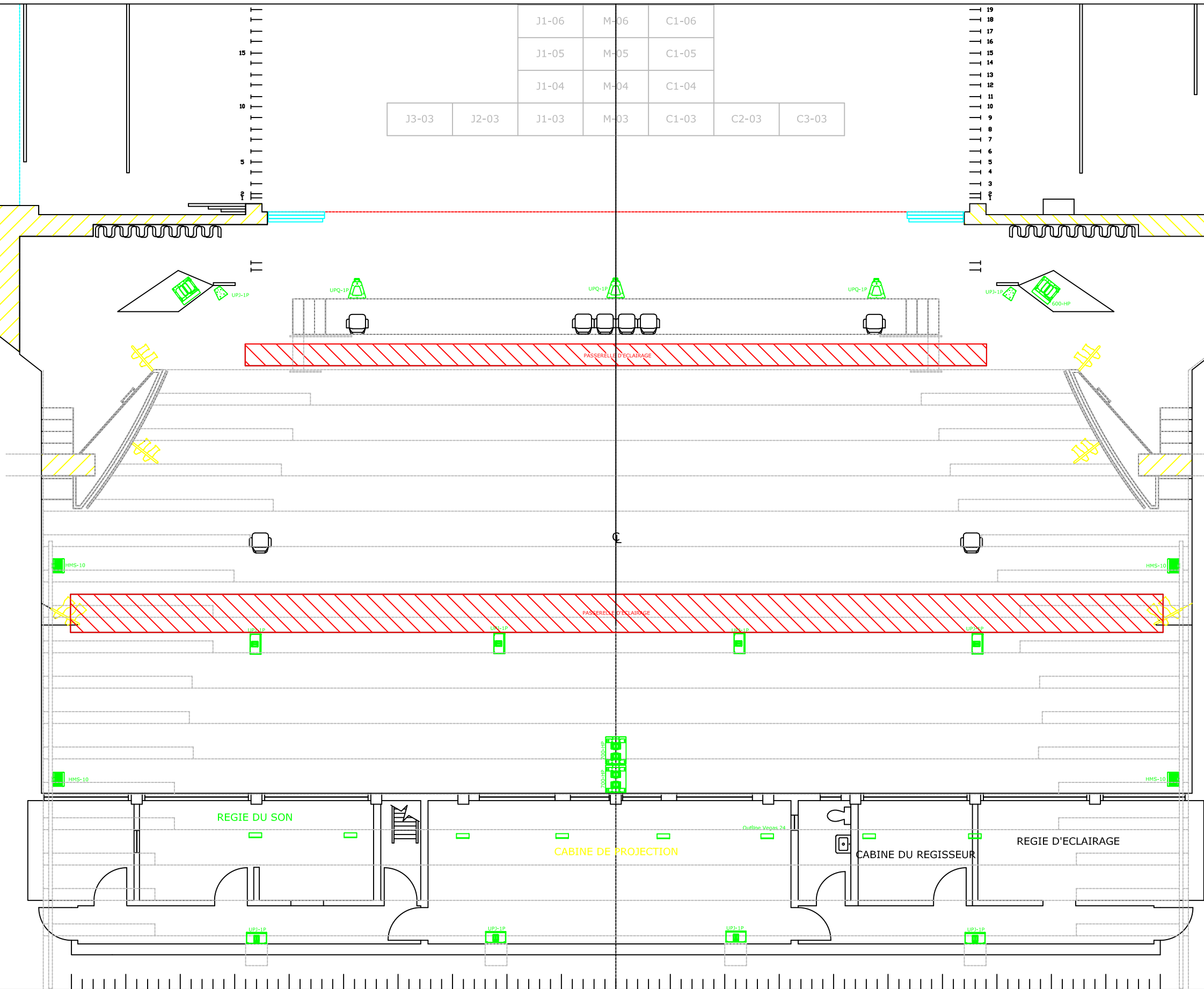
15
10
5
0

19
18
17
16
15
14
13
12
11
10
9
8
7
6
5
4
3
2

15'
10'
5'
0'
5'
10'

J1-06	M-06	C1-06				
J1-05	M-05	C1-05				
J1-04	M-04	C1-04				
J3-03	J2-03	J1-03	M-03	C1-03	C2-03	C3-03

RIDEAU MAISON
PERCHE ELECT.MOBILE 1
PERCHE ELECT.MOBILE 2



Salle / Location:

THÉÂTRE JEAN DUCEPPE
175, rue Sainte -Catherine ouest, Montréal (Qc) H2X 1Z8

Titre / Title:

VUE DE DESSUS - Sonorisation
House Sound System - TOP VIEW

Dessin / Drawing:
JD-salle&coupe.dwg

Échelle / Scale: Voir règle - See ruler
Date: Fev / February '19

Format:
Architecturale / Impérial
11"x 17"