

# CINQUIÈME SALLE

UPDATED - December 2024

[Web version and autocd plots are available here.](#)

The technical documentation of the venue that include stage, sound or lighting is not listed as a contract. Contact the technical department for an update on this document.

## General Informations

### House

Hall with a variable configuration. It contains 300 fixed seats and 6 rows with retractable seats under mobile platforms.

seating		Normal	
seating capacity for booking		409	
house seats		4	
total		413	
no row on stage		configuration 0-0	305
1 row on stage		configuration 1-0	323
2 rows on stage		configuration 2-0	341
3 rows on stage		configuration 3-0	359
4 rows on stage		configuration 4-0	377
5 rows on stage		configuration 5-0	395
6 rows on stage		configuration 6-0	413
vomitory		18	s/o
house dimensions			
from gallery to the last row		21,49 m	70'-6"

### Artists entrance

175, St.Catherine Street W. / PDA's main entrance

\* the artist's entrance door is located in l'espace culturel George-Émile Lapalme next to Place Deschamps restaurant.

### Loading dock

1444, St. Urbain Street

loading dock door's dimension			
height		3,81m	12'-6"

NB: a freight elevator permits access to two levels below and another one give access to the stage.

doors to stage dimensions			
height		2,18 m	7'-2"
width		2,13 m	7'-0"

loading dock elevator's dimensions			
height		3,15 m	10'-4"
width		2,84 m	9'-4"
		3,66 m	12'-0"

cinquième salle elevator's dimensions			
height		2,34 m	7'-8"
width		2,44 m	8'-0"

### Production office

Located next to the dressing rooms (at stage level) 1 person	Ccs02 018
telephone :	514-285-4259

### Dressing rooms

7 persons large dressing room - toilet / shower	men's dressing room (Ccs02 011)	at stage level
9 persons large dressing room - toilet / shower	women's dressing room (Ccs02 007)	at stage level
small individual dressing room - toilet / shower	small dressing room (Ccs02 021)	

## CINQUIÈME SALLE

### Wardrobe room

local number	Cs02 014	
room located at stage level	3,35 x 4,27 m	11'-0" x 14'-0"
access door	1,22 x 2,06 m	4'-0" x 6'-8"
sink	1	
dryer machines	2	
washing machines	2	
flat irons	1	
Jiffy steamer	2	

NB: wardrobe employees are members of IATSE local 863

### Rehearsal rooms

available upon request

## Stage

### Stage description and dimensions

Wooden stage floor covered with black linoleum divided into 13 sections with various heights.

#### proscenium opening

height:		
under pipes	5,05 m	16'-7"
under the trampoline's structure	5,46 m	17'-11"
under the trampoline's plaiting	5,61 m	18'-5"
maximum width	18,90 m	62'-0"
minimum width	12,50 m	41'-0"

#### stage's dimensions

height (6-0 configuration)	0,76 m	2'-6"
total width	18,90 m	62'-0"
minimum width	12,50 m	41'-0"
from center line to S.R. wall	9,45 m	31'-0"
from center line to S.L. wall	9,45 m	31'-0"

the depth is between 20' and 40' depending on the house configuration.

hanging of projectors or any other element is done on the trampoline.

### Rigging system

Movable pipe system on rails, under the trampoline

length	18,29 m	60'-0"
maximum loading capacity	500 kg	1000 lbs

### Chain Hoists

550 lbs load capacity chain hoist	4	ChainMaster	BGV-D8
-----------------------------------	---	-------------	--------

### Truss

Black triangle truss	0,30x0,30x2,44m	12"x12"x8'	Arcofab TDA-12FX-96S
----------------------	-----------------	------------	----------------------

## CINQUIÈME SALLE

### Stage masking

**Stage curtains (black velvet)**

\* see the house hang

**house curtain (black in 2 sections on a traveler)**

2		
width	9,14 m	30'-0"
height	4,75 m	15'-7"

**sets of legs**

3		
width	3,96 m	13'-0"
height	4,72 m	16'-10"

**border**

1		
width	16,15 m	53'-0"
height	0,61 m	2'-0"

**border**

2		
width	18,29 m	60'-0"
height	0,91 m	3'-0"

**border**

3		
width	18,29 m	60'-0"
height	0,76 m	2'-6"

**black traveller**

2		
width	9,14 m	30'-0"
height	4,72 m	15'-6"

**German (4 sections per side)**

8		
width	2,44 m	8'-0"
height	4,72 m	15'-6"

**scrim (ecru color)**

1		
width	17,07 m	56'-0"
height	5,13 m	15'-6"

**scrim (black color)**

1		
width	17,07 m	56'-0"
height	5,13 m	15'-6"

**black backing (in 8 sections)**

8		
width	2,44 m	7'-4"
height	4,75 m	15'-7"

**cyclorama (cream colored)**

1		
width	17,20 m	56'-5"
height	4,88 m	16'-0"

\* see the line plot for house hang.

### Orchestra equipment

**Orchestra shell**

pieces number	9	
width	3,81 m	12'-6"
height	1,83 m	6'-0"

**Orchestra equipment**

music stand	30	
music stand light	30	
black chair	30	
black wood stool	6	

### Pianos (there are additional costs for the tuning)

1	Baldwin 9'	SD-10	tuned at 440 Hz
---	------------	-------	-----------------

## CINQUIÈME SALLE

### Praticables - Risers

riser	20		
	1,22 x 1,22 m	4' x 4'	
leg	48	152 mm	6"
	48	305 mm	12"
	48	457 mm	18"
	48	610 mm	24"

\* no dress kit available for the risers

### Ground support systems

4	bases+pin	24" x 24" - 3 holes
4	adjustables 7'-12'	horizontal
4	adjustable 6'-10'	vertical
4	black curtain	8' x 8'

### Tables

2	1,22 m	4'
2	1,82 m	6'
4	2,44 m	8'

### Lifts

(ac & battery power)	1	Genie	AWP-20S	on request
	1	Scissor Lift	3219	

### Step ladders

2	1,82 m	6'
2	3,04 m	10'
1	1,22 m	4'

### Dance floor

**Instructions for use:** SCREW PROHIBITED, NON-COMPLIANT TAPE FORBIDDEN, NO RAW MATERIAL PERMITTED (soil, sand, powder of any kind, dry food). Water or various liquid food: allowed but must be spun relatively quickly.

All productions wishing to use the prohibited materials must use their dance floor and our floor must be as sealed as possible.

black/white	7	40'-0" x 5'-3"	rolls	Showtex DanceCarpet Double (100% PVC, 1.25mm)
grey	7	40'-0" x 6'-0"	rolls	
grey	1	60'-0" x 6'-0"	rolls	

### Drum carpet

1	2.44 x 2.44 m	8'-0" x 8'-0"
---	---------------	---------------

**Lighting**
**Touring companies (120 / 208 volts)**

1	100 A / cam lock
---	------------------

**Follows spots**

1.2 kw follow spot (with fee)	1	Robert Juliat	Lucy HMI
-------------------------------	---	---------------	----------

**Stage lighting control**

In order to control all dimmers (universe 1) and permanent LED spotlights (universe 2 and 3), a guest console must have at least 3 universes.

To use LED mobile projectors, the guest console must have a total of 4 universes. Please see the lighting annexes

[The ETC console default file can be downloaded with the autocad plans on the website: click here](#)

console	1	ETC	EOS APEX 10 24k	connected to WiFi Backup processor Laptop with ETC node
located in the booth in the back of the house.	1	ETC	ETCpad	
	1	ETC	EOS Proc. APEX 24k	
	1	ETC	Nomad+gadget II	
1 dimmer = 1 channel		Strand	CD-80AE	*1 dimmer= 1 channel, 120V direct for LED fixtures
dimmer	270*	Strand	2,4 kw	
dimmer	9	Strand	6 Kw	

**Fixed equipment**

<b>above the trampoline</b>				
above stage	20	ETC	Desire Fresnel (color)	zoom 13°-55°, rgbw, with barn-door 10 on each side
above stage	20		25°-50°	
FOH 1 and 2	28		15°-30° et 25°-50°	
Booth	6		26°	
<b>under the trampoline</b>				
	12	DTS - FOS 100 FC (strip led) 3'-3"		
<b>boom</b>				
	16	ETC - S4 WRD Color	36°	
	16	II	26°	

**Mobile equipments**

<b>ETC projectors</b>	16	ETC - S4 WRD Color II	
lenses available:		2	5°
		2	10°
		4	19°
		10	26°
		10	36°
		8	50°
		2	90°
<b>ETC - S4 WRD Color II with lenses</b>	8	-	25°-50°
<b>ETC PARNel</b>	12	ETC - S4 WRD PARNel 25°-46°	
<b>Strand fixtures</b>	24	Zoom 15°- 32°	575 W
<b>Fresnel 8po</b>	8	Strand	2 kW
<b>Fresnel 6po</b>	12	Strand	1 kW
<b>PAR 64</b>	24	Altman	1 kW
Bulbs available:		Wide - Medium - Narrow - Very Narrow	

**Lighting accessories**

<b>Gobo holder</b>		20 A, 20 B	S4
		20 B	Strand
<b>Iris</b>		10	S4
		10	Strand
<b>floor base</b>		20	single
<b>Roscolux color filters</b>			

## CINQUIÈME SALLE

### Sound

#### Touring companies (120 / 208 volts)

1	100 A / cam lock
---	------------------

#### Mixing console

StageRack Rio 48 inputs/24 outputs/8 outputs AES Ipad Remote control	moveable	1	Yamaha	QL5	32 inputs / 16 outputs with Lan switch DANTE Yamaha : 1 mobile and 1 at booth with Wi-Fi connection
		2	Rio3224 D2 + Rio1608 D2		
		1	Apple	Ipad	

#### Main House speaker system

speaker	5	L'Acoustics	A10i Wide	2 for Left, 2 for Right, 1 for center clusterconfiguration 6-0
sub-bass speaker	2	L'Acoustics	SB18 Ili	
speaker	4	L'Acoustics	5XT	
Delay speaker	4	Meyer Sound	UPJ-1P	

#### Concert sound system (in addition to main system, needs to be assembled and disassembled)

enceinte	4	Meyer	CQ1-P
enceinte sub-basse	2	Meyer	500-HP
1st rows speaker	2	Meyer Sound	UPJ-1P

#### House processing

House PA processor	1	Meyer	Galileo 616	used for both system (UPA & CQ1)
--------------------	---	-------	-------------	----------------------------------

#### Playback & Recorder

mobile CD player with remote control	2	Denon	DN-C635
--------------------------------------	---	-------	---------

#### Stage monitor system

passive speaker	6	L'Acoustics	X12
-----------------	---	-------------	-----

#### Microphones

4	AKG	C-414 XLS	only 1 is a match pair
2	AKG	535EB	
2	EV	ND308B	with drum clip
1	EV	ND408B	
2	Neumann	KM-100	
2	Sennheiser	MKH-8040	
3	Sennheiser	MD421	
4	Sennheiser	e604	
1	Shure	Beta52	
1	Shure	beta91	
6	Shure	SM-57	
5	Shure	SM-58	
2	Shure	SM-98A	with shock mount mono passive D.I. mono active D.I. stereo active D.I. mono active D.I.
2	Radial	Pro DI	
2	Radial	Pro 48	
2	Radial	J 48	
4	Klark & Technik	DN100	podium mics With universal clip-on mounting system (5" gooseneck)
2	Countryman	Gooseneck 18"	
3	Audio-Technica	ATM 350U	With Piano mounting system (9" gooseneck) Component - Guitar mounting system (to use with ATM350)
2	Audio-Technica	ATM 350PL	
1	Audio-Technica	AT8491G	Nb: 1 extra long for piano stand
13		long with boom	
4		small with boom	
4		long with boom	
3		small with boom	
1		table stand	

## CINQUIÈME SALLE

### Communications

fixed stations located in the theater	1	Clearcom	Arcadia	Main Station for Wireless and wired intercom Wireless Beltpack Wired beltpack Desktop station guest connections
	5	Clearcom	FSE-BP-50	
	4	Clearcom	HX-2-BP	
	6	Clearcom	HKB-2X	
		4 x 2W	4 x 4W	

### Back-stage video display system

Back-stage televisions broadcasting a fixed room camera plan (4 TVs: 1 green room, 1 dresser room, 1 SL stage entrance, 1 production office)  
Other 

24 outputs for media connections
----------------------------------

 on stage

### Hearing-impaired system

DECADE	88.1 FM
--------	---------

## Video

### Digital projector

The video projector is not exclusive to the 5E SALLE, check availability and rental fees.

projector	1	CHRISTIE	Roadster HD14K-M
lens	1	ILS 1.25-1.6 SX+ / 1.16-1.49 HD	
	1	ILS 2.0-2.8 SX+ / 1.8-2.6 HD	

### Projection screen

The projection screen is only used for film projection.

The screen can NOT be used as a projection surface, such as scenic element for all other forms of representation, such as dance, theater, musical or other.

motorized front projection screen installed on rail

width	9,58 m	31'- 5"
height	4,06 m	13'- 4"

## CINQUIÈME SALLE

Le dossier technique de la salle, dans lequel sont énumérés les équipements techniques de scène, de son et d'éclairage, ne constitue pas un document contractuel. Veuillez communiquer avec le département technique pour connaître les mises à jour du présent devis.

The technical documentation of the venue that includ stage, sound or lighting is not list as a contract. Contact the technical department for an update on this document.

### ACCROCHAGE STANDARD DU THÉÂTRE / HOUSE HANG

(Remise à zéro)

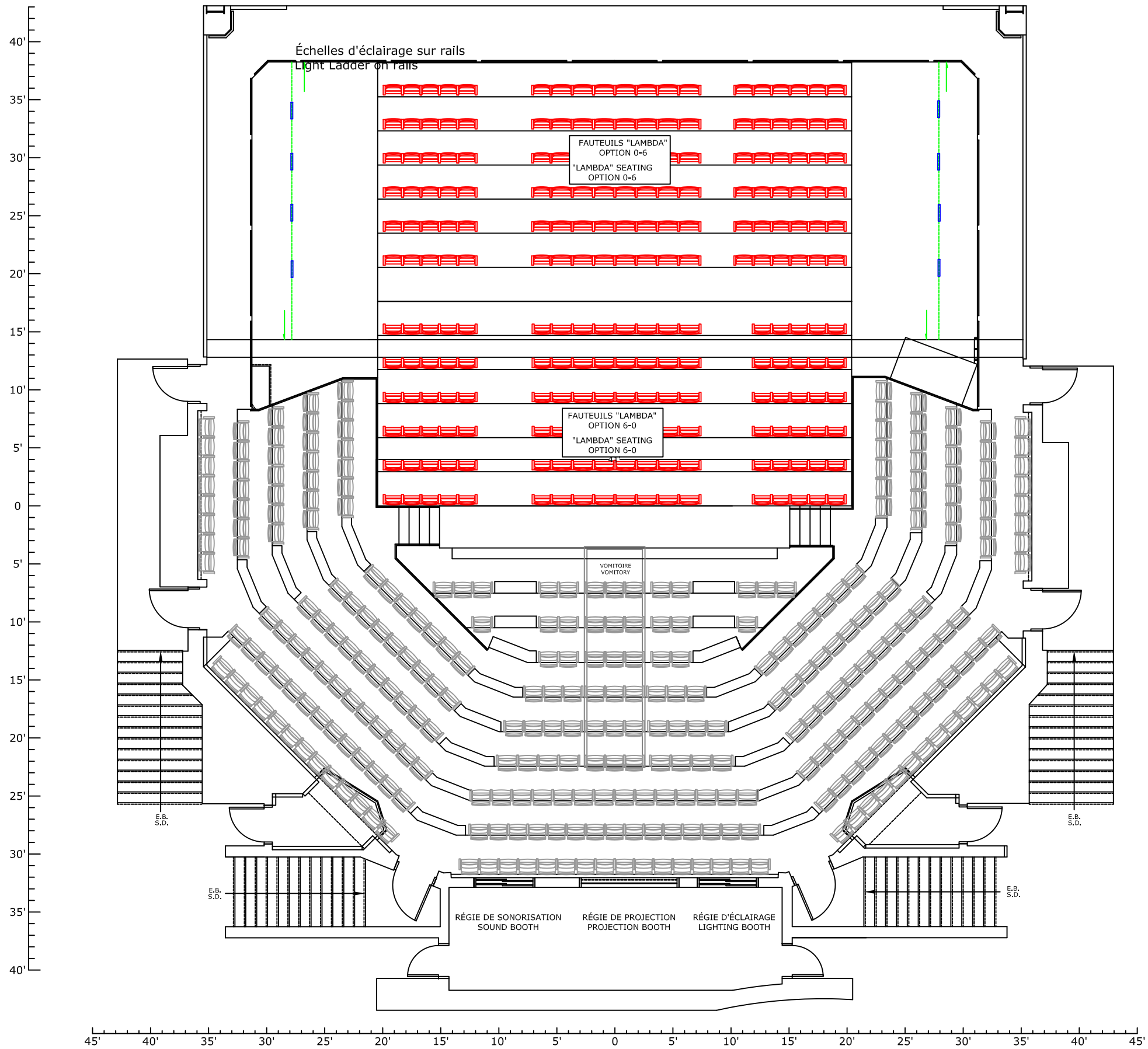
À partir du mur de fond

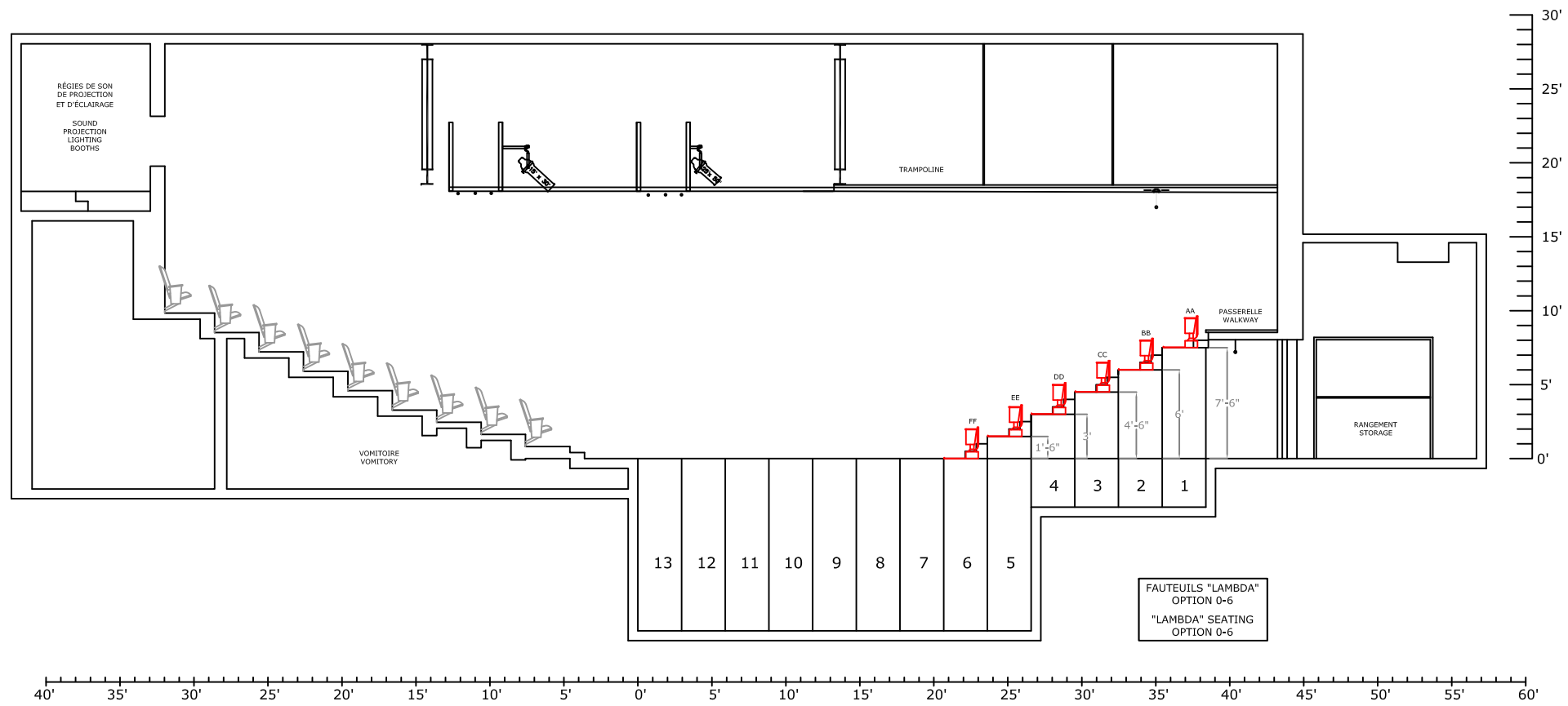
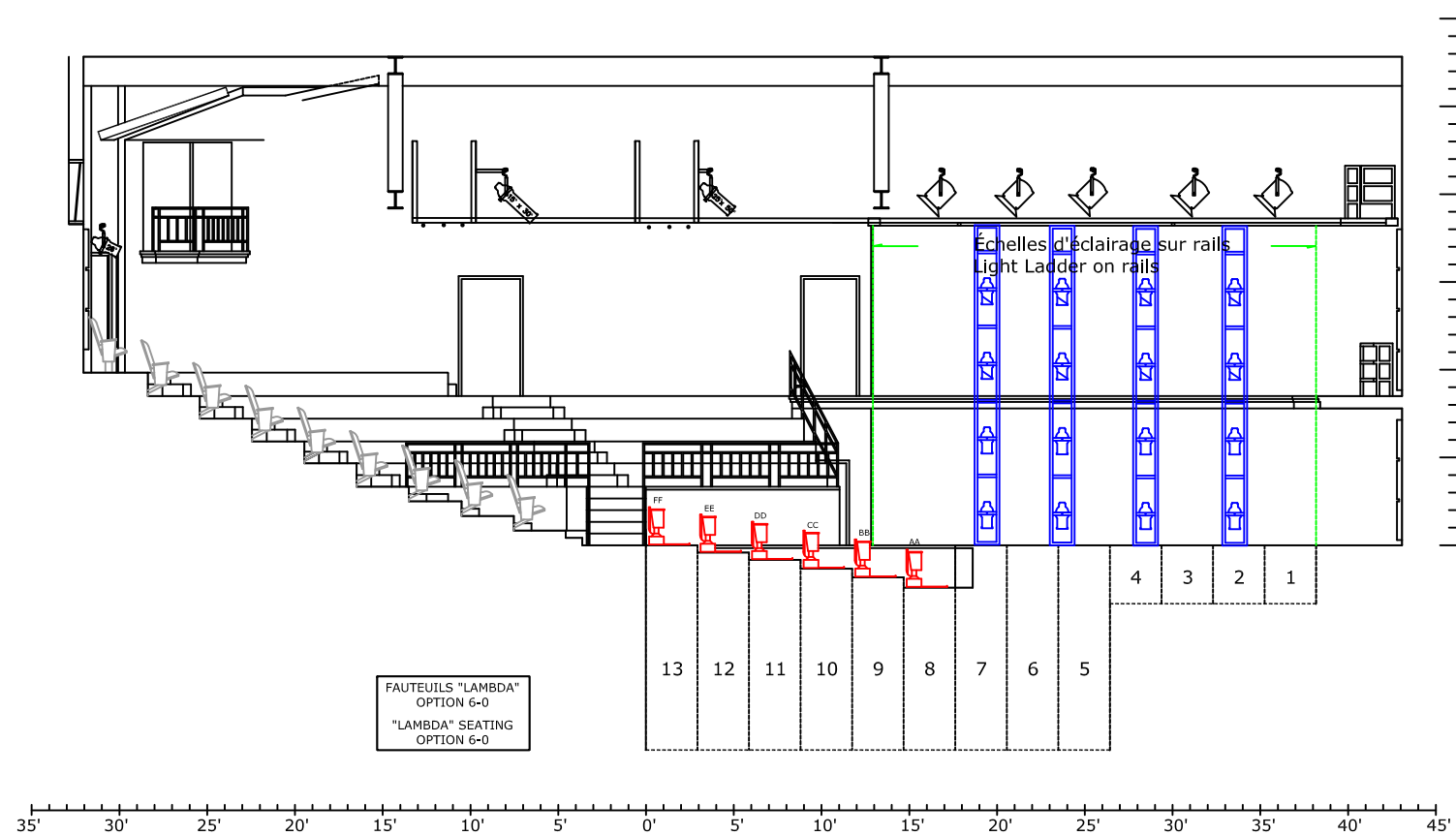
mètres meters	pieds feet	équipe set number	description	dimensions (L x H)		date
				mètres / meters	pieds / feet	
sur rail	on rail	17	Écran de projection avant motorisé	Motorized front projection screen	9,58 x 4,06	31'-5" x 13'-4"
1,52 m	5'	16	cyclorama	cyclorama	17,20 x 4,88	56'-5" x 16'
1,75 m	5'-8"	15	éclairage cyclo strip LED	cyclorama strip light DEL	8 strips	8 strips
1,98 m	6'-6"	14	fond noir (2 sections) frise # 5	black backing (2 sections) border # 5	18,59 x 4,75	61' x 15'-7" 2023
2,13 m	7'	13	libre	free		
3,05 m	10'	12	pendrillon #3	legs # 3	3,96 x 5,13	13' x 16'-10" 2023
3,20 m	10'-6"	11bis	tuyau de 2" libre sous-perché	2" pipe free under hang	à 5,22 m du plancher	17'-1" from stage floor
3,20 m	10'-6"	11	frise # 4	border # 4	18,29 x 0,61	60' x 2' 2023
3,35 m	11'	10	échelle d'éclairage # 4	boom # 4		
4,57 m	15'	9	pendrillon #2	legs # 2	3,96 x 5,13	13' x 16'-10" 2023
4,72 m	15'-6"	8bis	tuyau de 2" libre sous-perché	2" pipe free under hang	à 5,19 m du plancher	17' from stage floor
4,72 m	15'-6"	8	frise # 3	border # 3	18,29 x 0,76	60' x 2'-6" 2023
4,88 m	16'	7	échelle d'éclairage # 3	boom # 3		
6,10 m	20'	6	rideau sur patience incluant frise # 2	black traveller with border # 2	(2) 9,14 x 5,13 18,29 x 0,76	(2) 30' x 16'-10" 60' x 2'-6" 2023
6,40 m	21'	5	échelle d'éclairage # 2	boom # 2		
7,92 m	26'	4	pendrillon #1	legs # 1	3,96 x 5,13	13' x 16'-10" 2023
8,08 m	26'-6"	3	frise # 1	border #	18,29 x 0,76	60' x 2'-6" 2023
8,18 m	26'-10"	2	échelle d'éclairage # 1	boom # 1		
	30'-0"	1	rideau maison sur patience incluant frise	house curtain on traveller with border	(2) 9,14 x 4,75 18,29 x 0,76	(2) 30' x 15'-7" 60' x 2'-6" 2023
Cour / jardin		4 x Allemandes par côté	4 x Germans sections per côté	4 x Germans sections per side	2,59 x 4,72	8' x 15'-6" 2023

#### équipement supplémentaire / entrepôt niveau 2

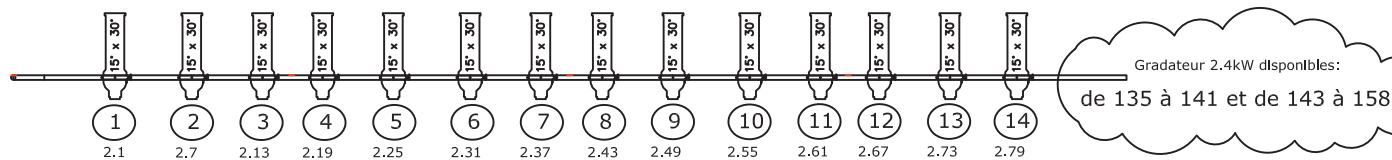
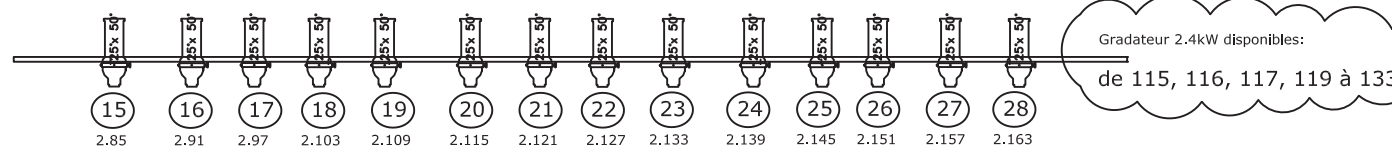
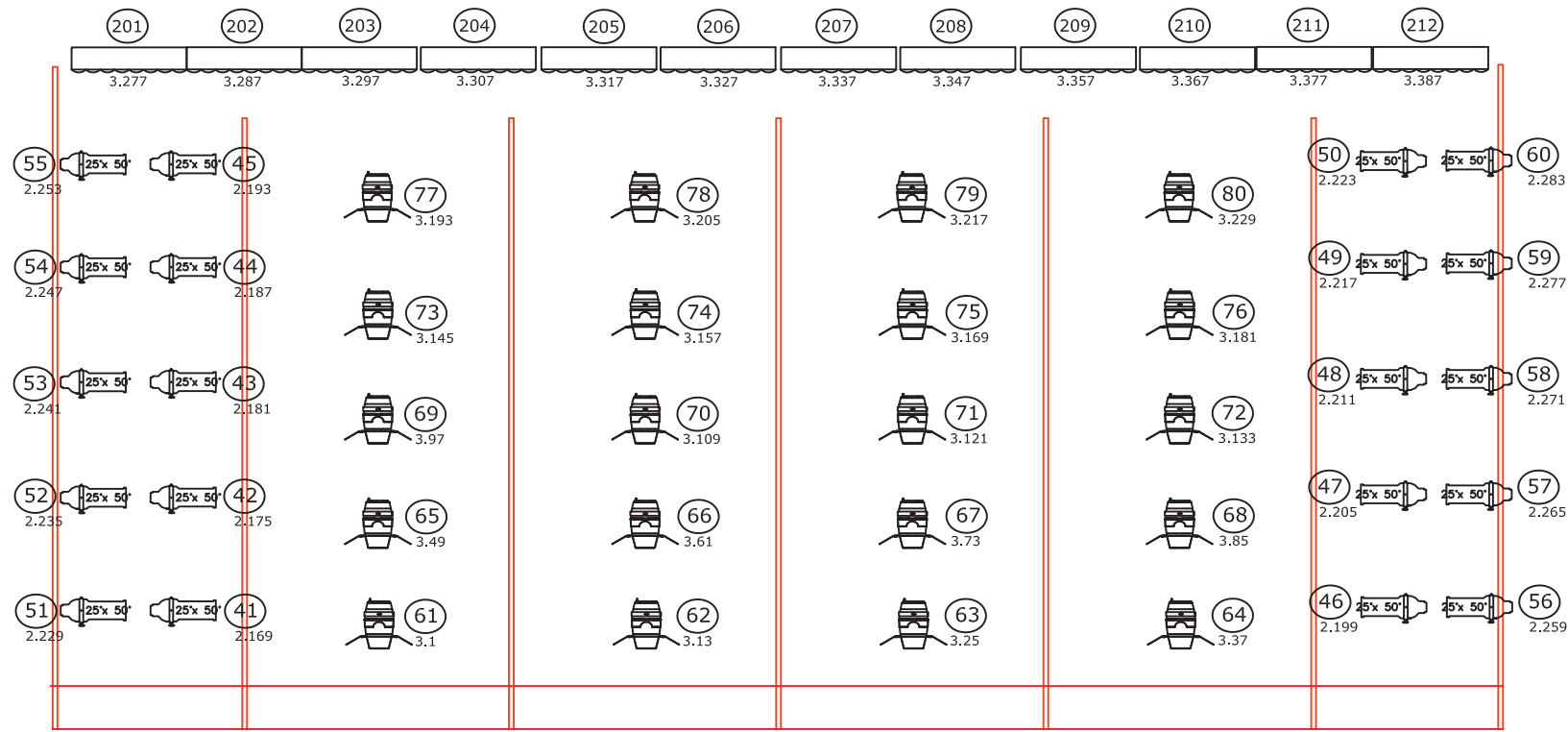
description	dimensions (L x H)		date
	mètres / meters	pieds / feet	
4 x pendrillons	4 x legs	3,96 x 4,88	13' x 16'
tulle (couleur écru)	scrim (ecru color)	17 x 5,13	55'9" x 15'10"
tulle (couleur noir)	scrim (black color)	17 x 5,13	55'9" x 15'10"





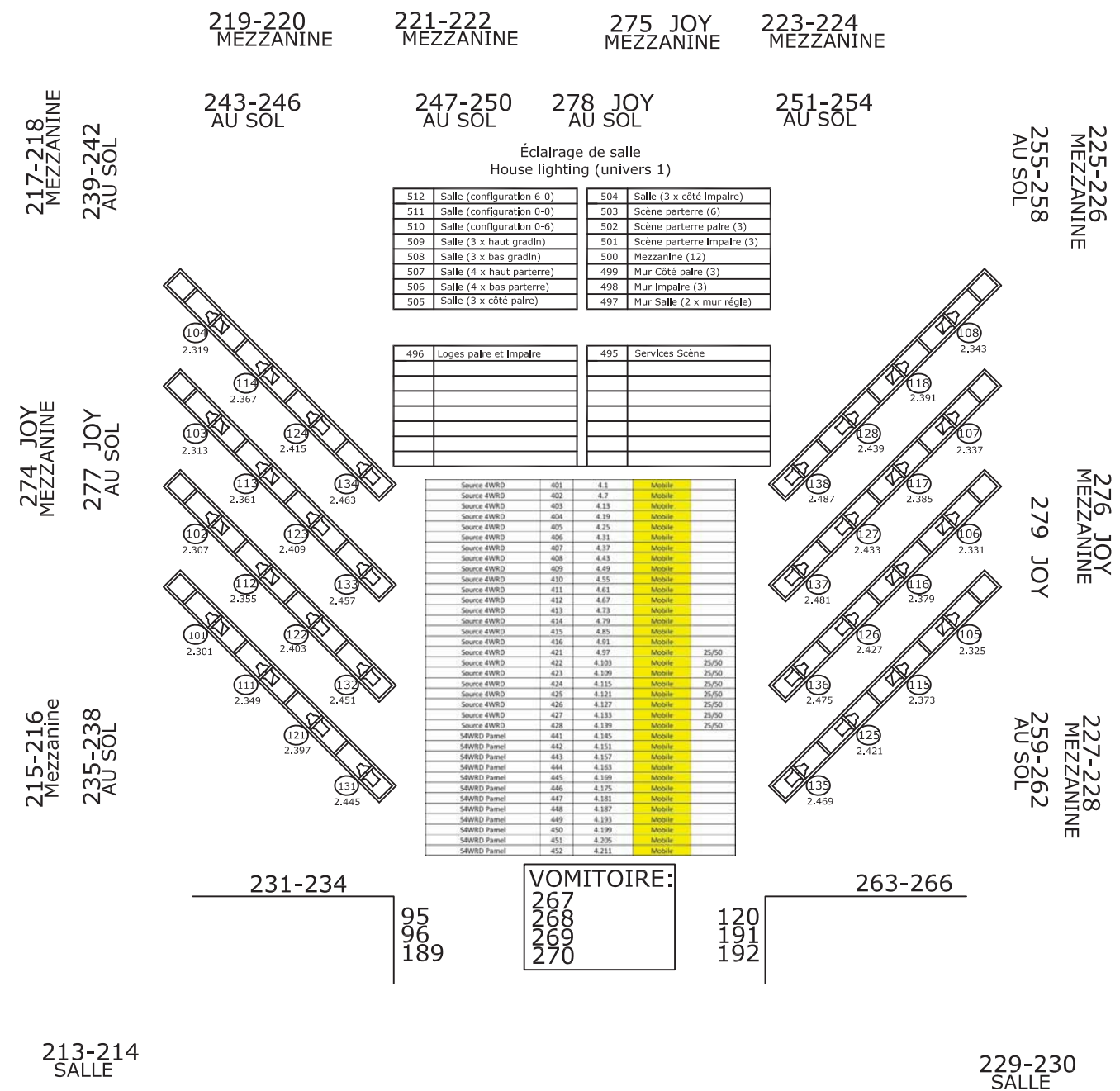


La liste des gradateurs libres est disponible dans les annexes du devis technique en ligne



NOTE 1 : TOUTES LES FIXTURES SONT ADRESSÉES DANS LE PATCH DE BASE, INCLUANT LES FIXTURES MOBILES - AUCUN CHANGEMENT AUTORISÉ  
 NOTE 2 : AUCUN GRADATEUR TRADITIONNEL N'EST PATCHÉ. TOUT AJOUT DOIT ÊTRE PATCHÉ EN DEHORS DES ADRESSES DE BASE DE CETTE LISTE.

**AFIN DE CONTROLER L'ENSEMBLE DES GRADATEURS ET PROJECTEURS LED PERMANENTS, LA CONSOLE DOIT DISPOSER D'AU MOINS 3 UNIVERS. POUR UTILISER LES ÉQUIPEMENTS MOBILES LED, LA CONSOLE DOIT DISPOSER D'UN TOTAL DE 4 UNIVERS.**



Source #WRD	401	4.1	Mobilier
Source #WRD	402	4.7	Mobilier
Source #WRD	403	4.13	Mobilier
Source #WRD	404	4.19	Mobilier
Source #WRD	405	4.25	Mobilier
Source #WRD	406	4.31	Mobilier
Source #WRD	407	4.37	Mobilier
Source #WRD	408	4.43	Mobilier
Source #WRD	409	4.49	Mobilier
Source #WRD	410	4.55	Mobilier
Source #WRD	411	4.61	Mobilier
Source #WRD	412	4.67	Mobilier
Source #WRD	413	4.73	Mobilier
Source #WRD	414	4.79	Mobilier
Source #WRD	415	4.85	Mobilier
Source #WRD	416	4.91	Mobilier
Source #WRD	421	4.97	Mobilier 25/50
Source #WRD	422	4.103	Mobilier 25/50
Source #WRD	423	4.109	Mobilier 25/50
Source #WRD	424	4.115	Mobilier 25/50
Source #WRD	425	4.121	Mobilier 25/50
Source #WRD	426	4.127	Mobilier 25/50
Source #WRD	427	4.133	Mobilier 25/50
Source #WRD	428	4.139	Mobilier 25/50
Source #WRD	441	4.145	Mobilier
Source #WRD	442	4.151	Mobilier
Source #WRD	443	4.157	Mobilier
Source #WRD	444	4.163	Mobilier
Source #WRD	445	4.169	Mobilier
Source #WRD	446	4.175	Mobilier
Source #WRD	447	4.181	Mobilier
Source #WRD	448	4.187	Mobilier
Source #WRD	449	4.193	Mobilier
Source #WRD	450	4.199	Mobilier
Source #WRD	451	4.205	Mobilier
Source #WRD	452	4.211	Mobilier

VUE EN PLAN - ÉCLAIRAGE-ÉCHELLE  
 PLAN VIEW - LIGHTING-LADDER



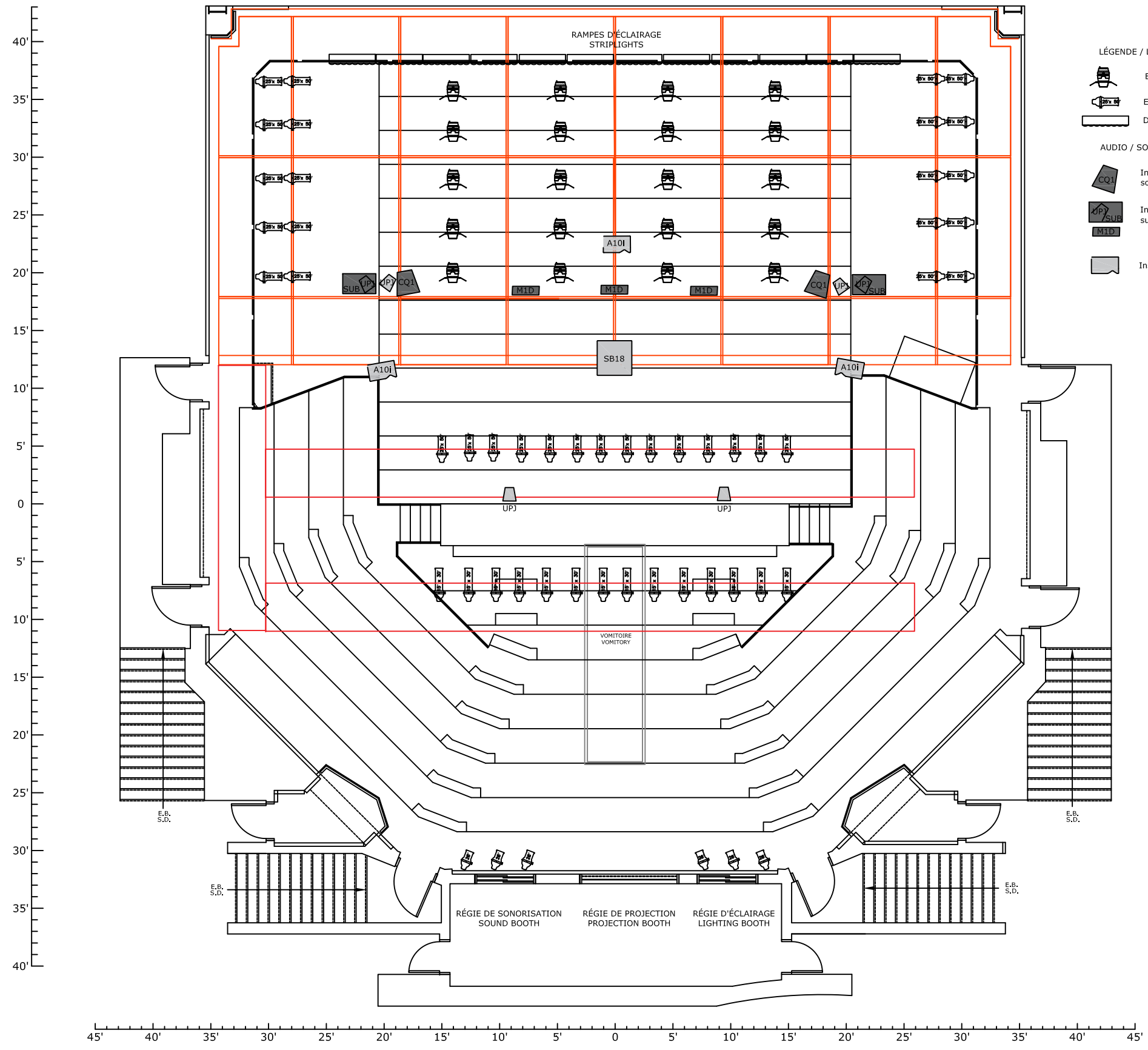
Salle / Location:

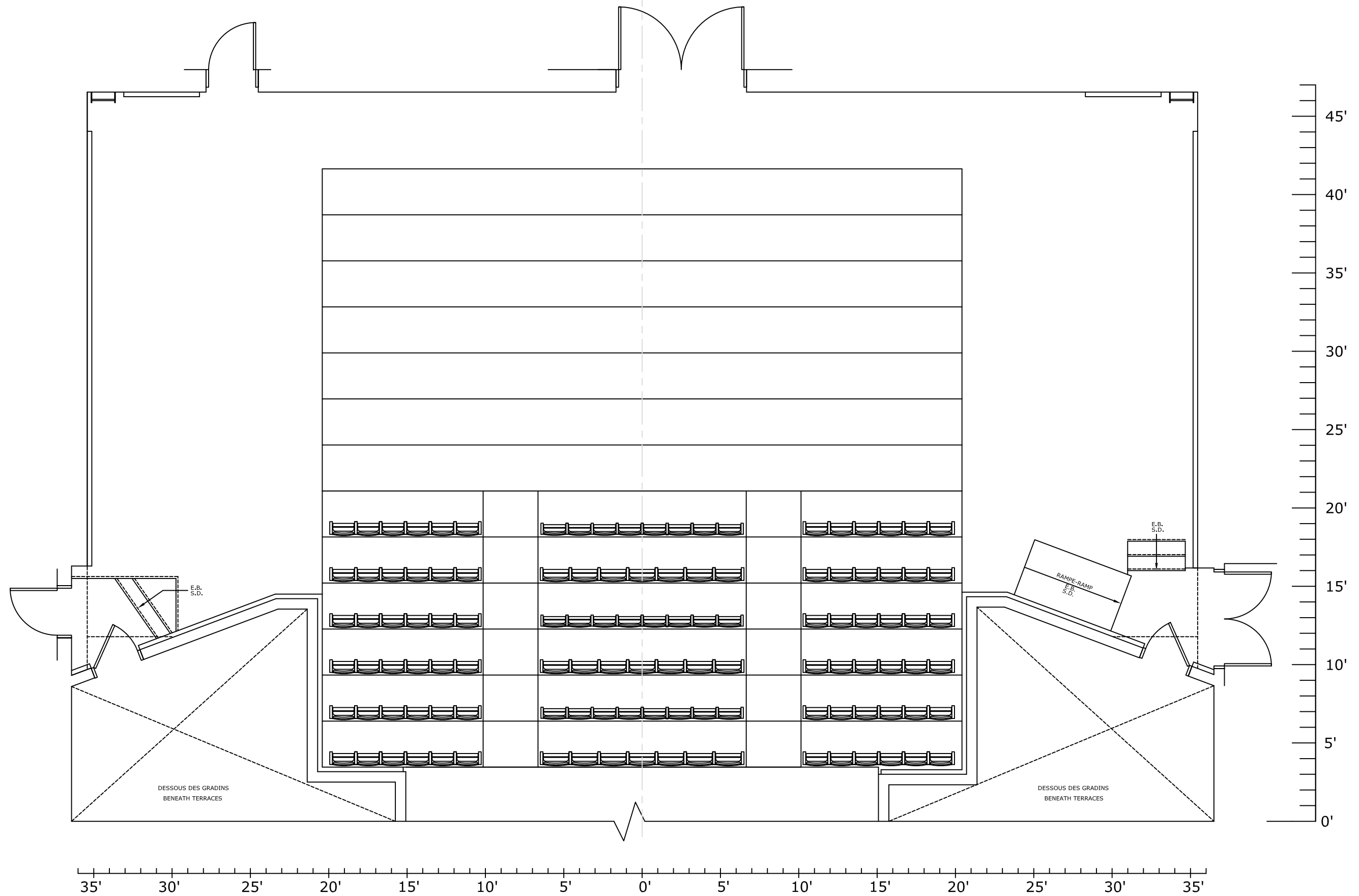
**CINQUIÈME SALLE**  
 260, boul. de Maisonneuve ouest, Montréal (Qc) H2X 1Y9

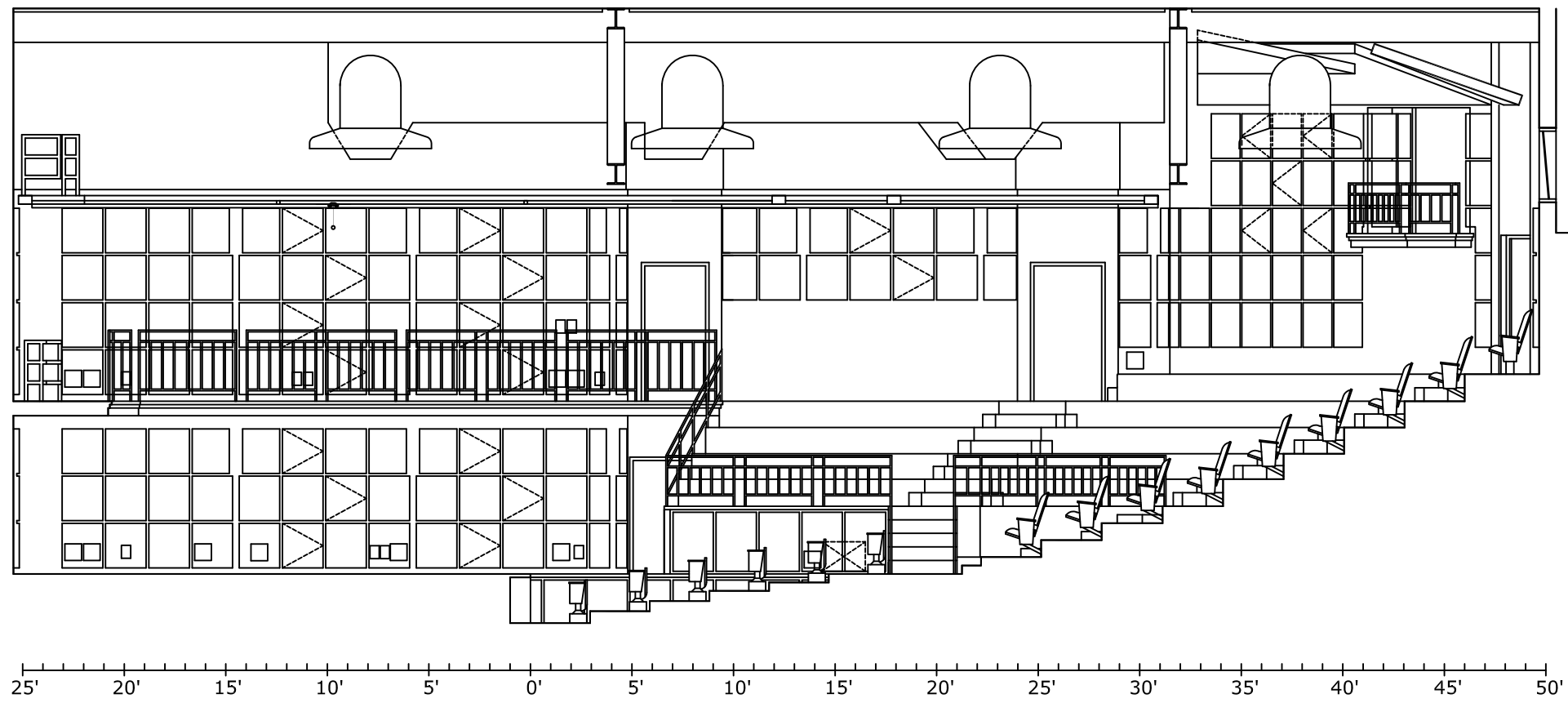
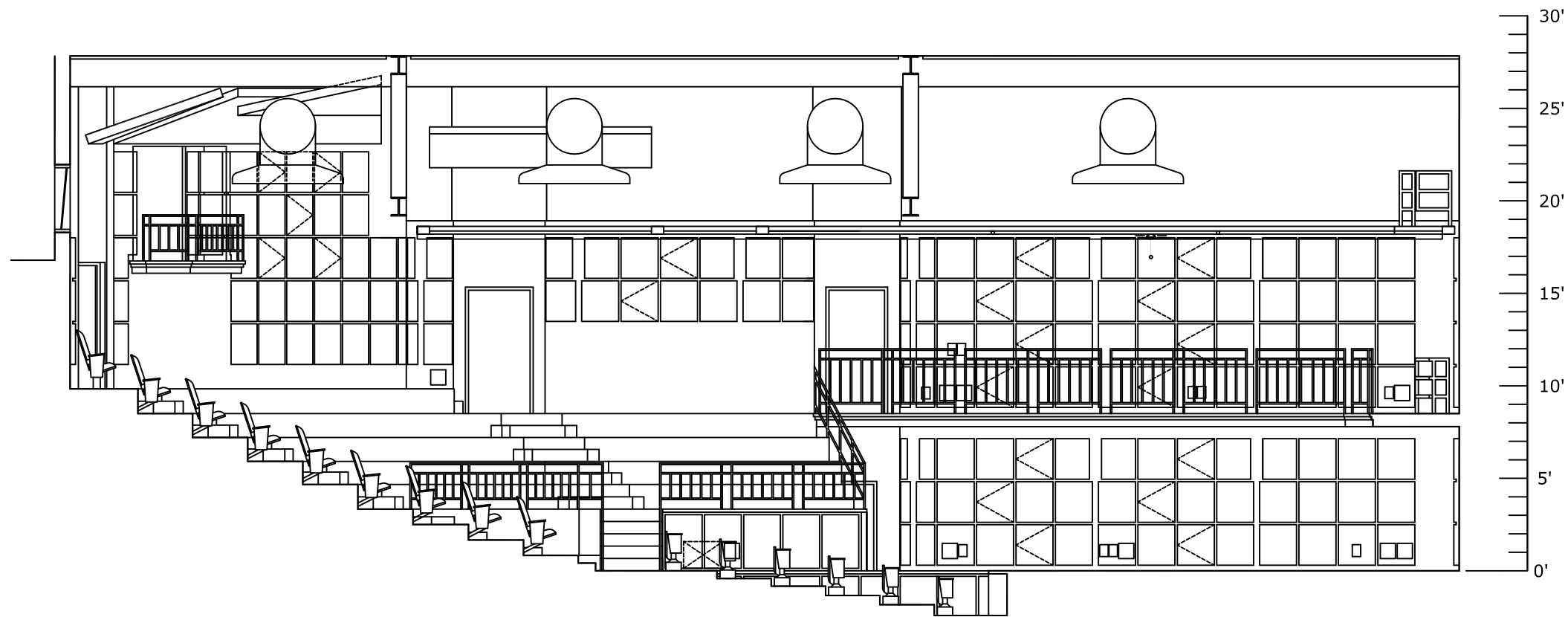
Titre /Title:

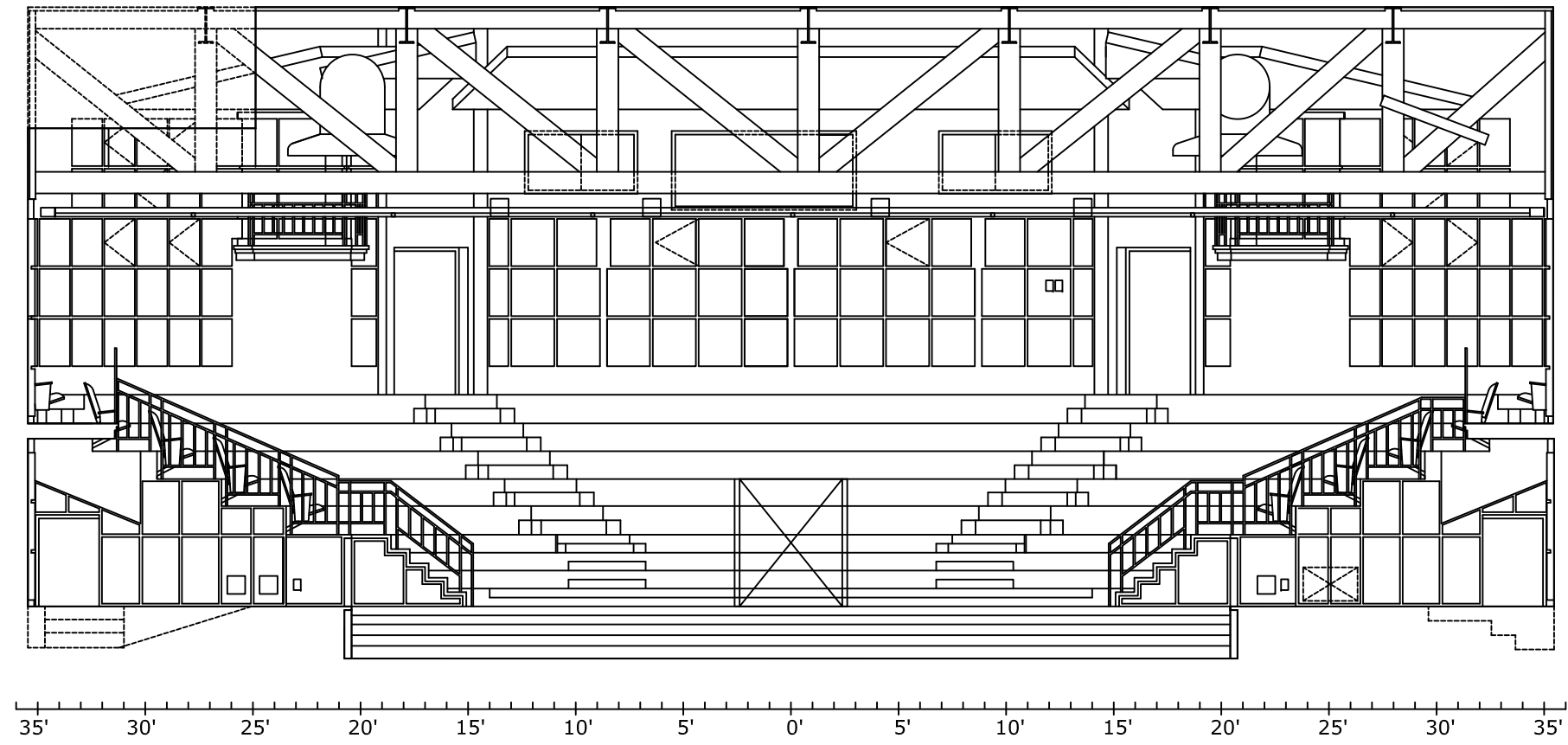
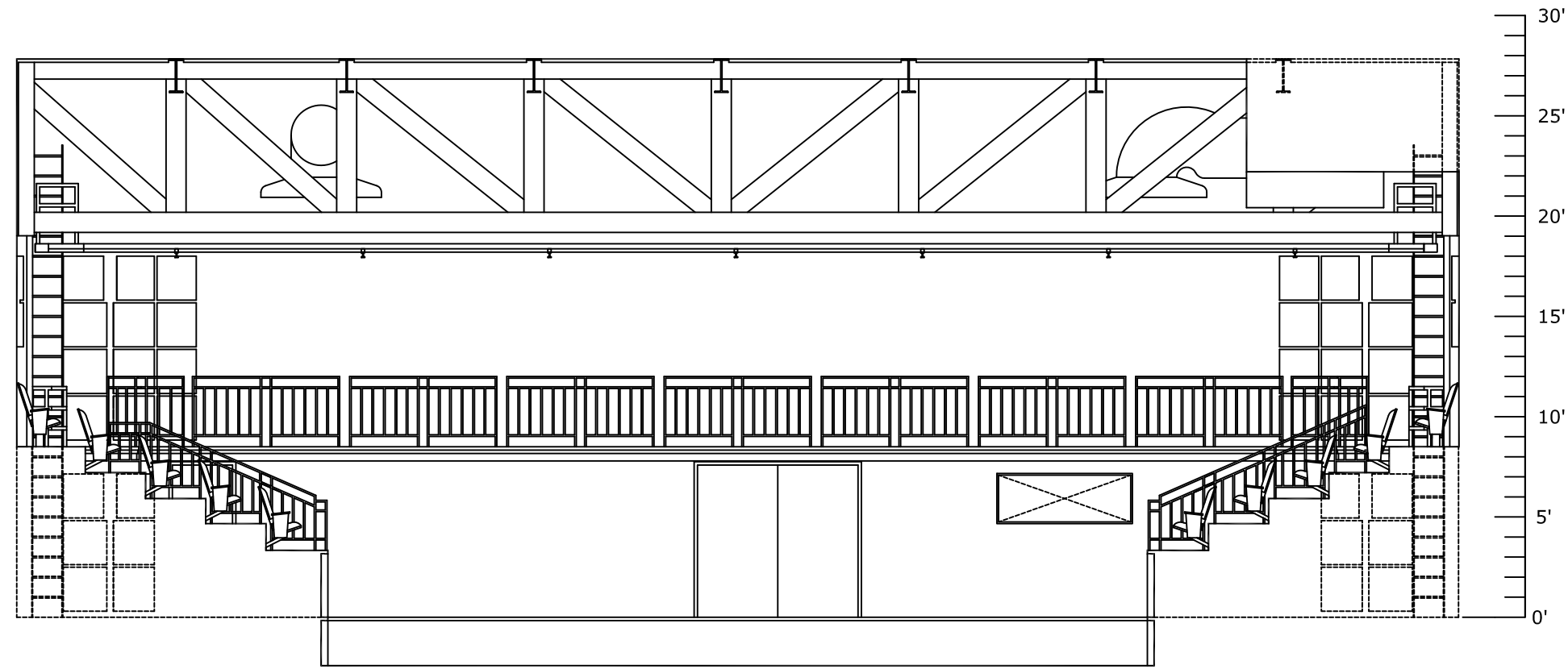
VUE EN PLAN - CIRCUITERIE  
 PLAN VIEW - CIRCUIT

Dessin /Drawing:  
 PDA\_5E-TECHNIQUE\_AI  
 Échelle / Scale:  
 Voir règle-See ruler  
 Date:  
 Oct / Octobre 2023  
 Format:  
 ArchItecturale / Impériaal  
 11"x 17"









**LISTE DES ADRESSES DMX**

**NOTE 1 : TOUTES LES FIXTURES SONT ADRESSÉES DANS LE PATCH DE BASE, INCLUANT LES FIXTURES MOBILES - AUCUN CHANGEMENT AUTORISÉ**

**NOTE 2 : AUCUN GRADATEUR TRADITIONNEL N'EST PATCHÉ (univers 1). TOUT AJOUT DOIT ÊTRE PATCHÉ EN DEHORS DES ADRESSES DE BASE DE CETTE LISTE.**

**NOTE 3 : LE FICHER DE BASE EST DISPONIBLE EN TÉLÉCHARGEMENT AVEC LES PLANS CAD**

Modèle	Fixture	Adresse DMX	Position	Degrée
Source 4WRD	1	2.1	F.O.H 1	15/30
Source 4WRD	2	2.7	F.O.H 1	15/30
Source 4WRD	3	2.13	F.O.H 1	15/30
Source 4WRD	4	2.19	F.O.H 1	15/30
Source 4WRD	5	2.25	F.O.H 1	15/30
Source 4WRD	6	2.31	F.O.H 1	15/30
Source 4WRD	7	2.37	F.O.H 1	15/30
Source 4WRD	8	2.43	F.O.H 1	15/30
Source 4WRD	9	2.49	F.O.H 1	15/30
Source 4WRD	10	2.55	F.O.H 1	15/30
Source 4WRD	11	2.61	F.O.H 1	15/30
Source 4WRD	12	2.67	F.O.H 1	15/30
Source 4WRD	13	2.73	F.O.H 1	15/30
Source 4WRD	14	2.79	F.O.H 1	15/30
Source 4WRD	15	2.85	F.O.H 2	25/50
Source 4WRD	16	2.91	F.O.H 2	25/50
Source 4WRD	17	2.97	F.O.H 2	25/50
Source 4WRD	18	2.103	F.O.H 2	25/50
Source 4WRD	19	2.109	F.O.H 2	25/50
Source 4WRD	20	2.115	F.O.H 2	25/50
Source 4WRD	21	2.121	F.O.H 2	25/50
Source 4WRD	22	2.127	F.O.H 2	25/50
Source 4WRD	23	2.133	F.O.H 2	25/50
Source 4WRD	24	2.139	F.O.H 2	25/50
Source 4WRD	25	2.145	F.O.H 2	25/50
Source 4WRD	26	2.151	F.O.H 2	25/50
Source 4WRD	27	2.157	F.O.H 2	25/50
Source 4WRD	28	2.163	F.O.H 2	25/50
Source 4WRD	31	3.241	Régie Jardin	26
Source 4WRD	32	3.247	Régie Jardin	26
Source 4WRD	33	3.253	Régie Jardin	26



Source 4WRD	34	3.259	Régie Cour	26
Source 4WRD	35	3.265	Régie Cour	26
Source 4WRD	36	3.271	Régie Cour	26
Source 4WRD	41	2.169	Latéraux Jardin	25/50
Source 4WRD	42	2.175	Latéraux Jardin	25/50
Source 4WRD	43	2.181	Latéraux Jardin	25/50
Source 4WRD	44	2.187	Latéraux Jardin	25/50
Source 4WRD	45	2.193	Latéraux Jardin	25/50
Source 4WRD	46	2.199	Latéraux Jardin	25/50
Source 4WRD	47	2.205	Latéraux Jardin	25/50
Source 4WRD	48	2.211	Latéraux Jardin	25/50
Source 4WRD	49	2.217	Latéraux Jardin	25/50
Source 4WRD	50	2.223	Latéraux Jardin	25/50
Source 4WRD	51	2.229	Latéraux Cour	25/50
Source 4WRD	52	2.235	Latéraux Cour	25/50
Source 4WRD	53	2.241	Latéraux Cour	25/50
Source 4WRD	54	2.247	Latéraux Cour	25/50
Source 4WRD	55	2.253	Latéraux Cour	25/50
Source 4WRD	56	2.259	Latéraux Cour	25/50
Source 4WRD	57	2.265	Latéraux Cour	25/50
Source 4WRD	58	2.271	Latéraux Cour	25/50
Source 4WRD	59	2.277	Latéraux Cour	25/50
Source 4WRD	60	2.283	Latéraux Cour	25/50
Fresnel Desire Lustr8	61	3.1	Top	13-55
Fresnel Desire Lustr8	62	3.13	Top	13-55
Fresnel Desire Lustr8	63	3.25	Top	13-55
Fresnel Desire Lustr8	64	3.37	Top	13-55
Fresnel Desire Lustr8	65	3.49	Top	13-55
Fresnel Desire Lustr8	66	3.61	Top	13-55
Fresnel Desire Lustr8	67	3.73	Top	13-55
Fresnel Desire Lustr8	68	3.85	Top	13-55
Fresnel Desire Lustr8	69	3.97	Top	13-55
Fresnel Desire Lustr8	70	3.109	Top	13-55
Fresnel Desire Lustr8	71	3.121	Top	13-55
Fresnel Desire Lustr8	72	3.133	Top	13-55
Fresnel Desire Lustr8	73	3.145	Top	13-55
Fresnel Desire Lustr8	74	3.157	Top	13-55
Fresnel Desire Lustr8	75	3.169	Top	13-55
Fresnel Desire Lustr8	76	3.181	Top	13-55
Fresnel Desire Lustr8	77	3.193	Top	13-55
Fresnel Desire Lustr8	78	3.205	Top	13-55
Fresnel Desire Lustr8	79	3.217	Top	13-55
Fresnel Desire Lustr8	80	3.229	Top	13-55
Source 4WRD	101	2.301	Échelle Jardin	26

Source 4WRD	102	2.307	Échelle Jardin	26
Source 4WRD	103	2.313	Échelle Jardin	36
Source 4WRD	104	2.319	Échelle Jardin	36
Source 4WRD	105	2.325	Échelle Cour	26
Source 4WRD	106	2.331	Échelle Cour	26
Source 4WRD	107	2.337	Échelle Cour	36
Source 4WRD	108	2.343	Échelle Cour	36
Source 4WRD	111	2.349	Échelle Jardin	26
Source 4WRD	112	2.355	Échelle Jardin	26
Source 4WRD	113	2.361	Échelle Jardin	36
Source 4WRD	114	2.367	Échelle Jardin	36
Source 4WRD	115	2.373	Échelle Cour	26
Source 4WRD	116	2.379	Échelle Cour	26
Source 4WRD	117	2.385	Échelle Cour	36
Source 4WRD	118	2.391	Échelle Cour	36
Source 4WRD	121	2.397	Échelle Jardin	26
Source 4WRD	122	2.403	Échelle Jardin	26
Source 4WRD	123	2.409	Échelle Jardin	36
Source 4WRD	124	2.415	Échelle Jardin	36
Source 4WRD	125	2.421	Échelle Cour	26
Source 4WRD	126	2.427	Échelle Cour	26
Source 4WRD	127	2.433	Échelle Cour	36
Source 4WRD	128	2.439	Échelle Cour	36
Source 4WRD	131	2.445	Échelle Jardin	26
Source 4WRD	132	2.451	Échelle Jardin	26
Source 4WRD	133	2.457	Échelle Jardin	36
Source 4WRD	134	2.463	Échelle Jardin	36
Source 4WRD	135	2.469	Échelle Cour	26
Source 4WRD	136	2.475	Échelle Cour	26
Source 4WRD	137	2.481	Échelle Cour	36
Source 4WRD	138	2.487	Échelle Cour	36
FOS 100	201	3.277	Cyclorama	
FOS 100	202	3.287	Cyclorama	
FOS 100	203	3.297	Cyclorama	
FOS 100	204	3.307	Cyclorama	
FOS 100	205	3.317	Cyclorama	
FOS 100	206	3.327	Cyclorama	
FOS 100	207	3.337	Cyclorama	
FOS 100	208	3.347	Cyclorama	
FOS 100	209	3.357	Cyclorama	
FOS 100	210	3.367	Cyclorama	
FOS 100	211	3.377	Cyclorama	
FOS 100	212	3.387	Cyclorama	

Source 4WRD	401	4.1	Mobile	
Source 4WRD	402	4.7	Mobile	
Source 4WRD	403	4.13	Mobile	
Source 4WRD	404	4.19	Mobile	
Source 4WRD	405	4.25	Mobile	
Source 4WRD	406	4.31	Mobile	
Source 4WRD	407	4.37	Mobile	
Source 4WRD	408	4.43	Mobile	
Source 4WRD	409	4.49	Mobile	
Source 4WRD	410	4.55	Mobile	
Source 4WRD	411	4.61	Mobile	
Source 4WRD	412	4.67	Mobile	
Source 4WRD	413	4.73	Mobile	
Source 4WRD	414	4.79	Mobile	
Source 4WRD	415	4.85	Mobile	
Source 4WRD	416	4.91	Mobile	
Source 4WRD	421	4.97	Mobile	25/50
Source 4WRD	422	4.103	Mobile	25/50
Source 4WRD	423	4.109	Mobile	25/50
Source 4WRD	424	4.115	Mobile	25/50
Source 4WRD	425	4.121	Mobile	25/50
Source 4WRD	426	4.127	Mobile	25/50
Source 4WRD	427	4.133	Mobile	25/50
Source 4WRD	428	4.139	Mobile	25/50
S4WRD Parnel	441	4.145	Mobile	
S4WRD Parnel	442	4.151	Mobile	
S4WRD Parnel	443	4.157	Mobile	
S4WRD Parnel	444	4.163	Mobile	
S4WRD Parnel	445	4.169	Mobile	
S4WRD Parnel	446	4.175	Mobile	
S4WRD Parnel	447	4.181	Mobile	
S4WRD Parnel	448	4.187	Mobile	
S4WRD Parnel	449	4.193	Mobile	
S4WRD Parnel	450	4.199	Mobile	
S4WRD Parnel	451	4.205	Mobile	
S4WRD Parnel	452	4.211	Mobile	
MDG Atmosphère	501	3.511		
MDG Atmosphère		3.512		