

The technical documentation of the venue that include stage, sound or lighting is not list as a contract. Contact the technical department for an update on this document.

## General Informations

### House

|  |   |
|--|---|
| <b>Seating</b>                                     | <b>Normal</b>                                   |
| seating capacity for booking                       | 1435  |
| house seats  | 12  |
| parterre (including house seats and orchestra pit) | 818   |
| Corbeille  | 334   |
| Balcon   | 295   |
| Total  | 1447  |
| <b>Removable seats (one by one)</b>                | 101   |
| row, seat number                                   | Q 1 à 20 / 1 to 20                              |
| "  | R 5 à 20 / 5 to 20                              |
| "  | S 5 à 21 / 5 to 21                              |
| "  | K, L, M, N, O, P 1 à 8 / 1 to 8                 |
| <b>Orchestra pits</b>                              | 55 musicians                                    |
| rows   | rows AA, BB and CC are removed. total: 58 seats |
| Capacity for booking                               | 1377  |
| <b>House dimensions</b>                            |   |
| from house curtain to last row of the house        | 24,46m 80'-3"                                   |
| from house curtain to last row in balcony          | 28,19m 92'-6"                                   |
| From Corbeille edge to Cyclorama (Projection)      | 31,24m 102'6"                                   |

### Artist entrance

#### 1400 St.Urbain street

|                  |   |             |            |                         |
|------------------|---|-------------|------------|-------------------------|
| Tour bus service | 2 | Nema 14-50R | 50A - 208V | location : loading dock |
|------------------|---|-------------|------------|-------------------------|

### Loading dock

#### 1410 St.Urbain street

At street level, the stage of the theater is located two levels above the street.

Sets, costumes and properties have to be transported to the stage by elevator.

|  |                |
|--|----------------|
| <b>Loading platform dimensions</b>     |                |
| width                                  | 9,58 m 31'-5"  |
| length                                 | 13,11 m 43'-0" |
| height (street level)                  | 4,11 m 13'-6"  |
| height (loading dock floor to ceiling) | 3,04 m 10'-0"  |

Two trailers (without tractors) can be parked inside the garage with doors closed.

|                        |                  |
|------------------------|------------------|
| <b>Elevator</b>        |                  |
| Maximum allowed weight | 6,8 T 15 000 lbs |
| width                  | 3,48 m 11'-5"    |
| length                 | 7,77 m 25'-6"    |
| height                 | 3,48 m 11'-5"    |

|                      |               |
|----------------------|---------------|
| <b>Elevator door</b> |               |
| width                | 2,97 m 9'-9"  |
| length               | 3,00 m 9'-10" |

all objects must not exceed 23 feet (7,0 m)

|   |   |         |          |
|---|---|---------|----------|
| <b>Chain Hoist for roadcases SR (Unstacking...)</b> | 1 | 1000 Kg | 2200 lbs |
|---|---|---------|----------|

**Production offices**
**Production offices - Level 6, stage level**

 located backstage, 3 persons  
 telephone :

|              |
|--------------|
| 514-285-4399 |
|--------------|

**Dressing rooms**
**DRESSING ROOMS - Level 6, stage level**

 3 persons toilet - shower  
 3 persons toilet - shower  
 3 persons toilet - shower  
 1 person toilet - shower  
 Make-up room or dressing room 2 persons

|              |
|--------------|
| Loge A       |
| Loge B       |
| Loge C       |
| Loge D       |
| Make-up room |

**DRESSING ROOMS - Level 5**

 2 persons toilet - shower (shared with F)  
 2 persons toilet - shower (shared with E)  
 2 persons toilet - shower (shared with H)  
 1 person toilet - shower (shared with G)  
 1 person toilet - shower (shared with K)  
 2 persons toilet - shower (shared with J)  
 2 persons toilet - shower  
 1 person toilet - shower

|        |
|--------|
| Loge E |
| Loge F |
| Loge G |
| Loge H |
| Loge J |
| Loge K |
| Loge L |
| Loge M |

**Musician's room (12 persons)**

 width  
 length

| Room of honour |         |
|----------------|---------|
| 6,20 m         | 20'- 4" |
| 5,46 m         | 17'-11" |

(69 persons) - toilets and showers

|                                      |
|--------------------------------------|
| <b>LARGE DRESSING ROOM - Level 7</b> |
|--------------------------------------|

36 women / 33 men

**Wardrobe room**
**DRESSING ROOMS - Level 5**

NB: wardrobe employees are members of IATSE local 863.

|               |           |
|---------------|-----------|
| 9,4 m x 3,6 m | 31' x 12' |
|---------------|-----------|

|   |                      |
|---|----------------------|
| 1 | sink                 |
| 3 | washing machine      |
| 3 | dryer machine        |
| 2 | flat iron            |
| 2 | Jiffy steamer        |
| 1 | Sewing machine       |
| 2 | quick change 8' x 8' |

**Rehearsal rooms**

available upon request

## Stage

### Stage description and dimensions

#### General rule

It is strictly forbidden to screw, nail or staple into the stage floor  
Production or visiting company must find alternatives ways to secure and anchor their stage equipment or scenery.  
In exceptional circumstances, anchors might be permitted upon prior arrangement and autorisation, in this eventuality, cost will apply.

#### Wings and stage area capacities

|  |   |   |
|--|---|---|
| <b>Stage floor</b>                     | wooden stage floor covered with linoleum (battleship), except playing area. |   |
| <b>Allowed load on the stage floor</b> | kg / m <sup>2</sup>   | lbs/pi <sup>2</sup> - pound/foot <sup>2</sup> |
|  | 650   | 150   |
| <b>Proscenium height</b>               | 0,97 m  | 3'- 2"  |
| <b>Proscenium opening</b>              | maximum height  | 8,23 m / 27'- 0"                              |
|  | minimum height  | 5,47 m / 18'- 0"                              |
|  | maximum width   | 17,00 m / 55'- 9"                             |
|  | minimum width   | 9,02 m / 29'- 7"                              |
| <b>Stage dimensions</b>                | Total width   | 46,81 m / 153'- 7"                            |
|  | from center line to S.R. wall   | 23,39 m / 76'- 9"                             |
|  | from center line to S.L. wall   | 23,42 m / 76'- 10"                            |
| <b>Total depth (excluding pit)</b>     | from house curtain to back wall   | 17,86 m / 58'- 7"                             |
|  | from house curtain to orchestra pit   | 16,31 m / 53'- 6"                             |
|  | from house curtain to orchestra pit   | 1,55 m / 5'- 1"                               |
|  | from house curtain to apron   | 6,81 m / 22'- 4"                              |
| <b>Height from stage floor to grid</b> | clearance under fly gallery SR  | 25,90 m / 85'- 0"                             |
|  | clearance under fly gallery SR  | 8,22 m / 27'- 0"                              |
|  | clearance under fly gallery SL  | 8,22 m / 27'- 0"                              |
| <b>Wing space, stage right</b>         | width   | 14,05 m / 46'-10"                             |
|  | length  | 12,19 m / 40'- 0"                             |
| <b>Wing space, stage left</b>          | width   | 13,74 m / 45'-10"                             |
|  | length  | 12,88 m / 42'- 3"                             |

### Rigging system

#### Fly system : Double purchase counterweight system

\* operated from S.R. fly gallery

|                            |         |          |
|----------------------------|---------|----------|
| pipe's length              | 22,94 m | 75'- 3"  |
| number of sets *           | 72      |          |
| * maximum loading capacity | 517 kg  | 1140 lbs |

\* see the line plot for house hang.

\* The motorized movie screen is fixed and it is for film projection only. (Position between lineset #17 and #19)

#### Motorized side pipe :

|                          |        |         |
|--------------------------|--------|---------|
| maximum loading capacity | 250 Kg | 550 lbs |
|--------------------------|--------|---------|

#### Motorized pipe in front of the proscenium

|                            |         |          |
|----------------------------|---------|----------|
|                            | 2       |          |
| pipe's length              | 14,63 m | 48'      |
| * maximum loading capacity | 544 Kg  | 1200 lbs |

### Main Power (208V) and Chain Hoist

|   |   |                 |        |
|---|---|-----------------|--------|
| at grid level   | 1 | 60 A - cam-lock |        |
| Subject to availability and billable:                 |   |                 |        |
| Chain hoists 1T double-brake, 100', 4,8 m/min         | 4 | ChainMaster     | BGV D8 |
| Chain Hoist controller                                | 1 |                 |        |
| Chain Hoist to lift video projector at Corbeille edge | 1 | ChainMaster     | 250 Kg |

*Unavailable between may till september*

fixed

**Stage masking**

|   |  |         |         |
|---|--|---------|---------|
| <b>House curtain</b>  | Fabric (yellow, orange and brown) with center opening. operated from stage right. Fly type (up and down) |         |         |
| <b>Stage curtains</b> (black velvet)<br>legs standard opening<br>* see the house hang | <table border="1"> <tr> <td>13,41 m</td> <td>44'- 0"</td> </tr> </table>                                 | 13,41 m | 44'- 0" |
| 13,41 m   | 44'- 0"  |         |         |

House Curtain is out of order. A manual stage curtain is available on lineset #1. Keep your flyman to operate.

44'-0" STRAIT EDGE

|                                |                   |
|--------------------------------|-------------------|
| <b>sets of legs</b>            | 7                 |
| width                          | 4,72 m   15'- 6"  |
| length                         | 10,67 m   35'- 0" |
| <b>borders</b>                 | 5                 |
| width                          | 21,34 m   70'- 0" |
| height                         | 4,72 m   15'- 6"  |
| <b>full back drops</b>         | 5                 |
| width                          | 21,48 m   70'- 0" |
| height                         | 10,67 m   35'- 0" |
| <b>half backing</b> (traveler) | 2                 |
| width                          | 10,67 m   35'- 0" |
| height                         | 10,67 m   35'- 0" |
| <b>Germans</b> (side curtains) | 6                 |
| width                          | 4,72 m   15'- 6"  |
| height                         | 10,67 m   35'- 0" |
| <b>Scrim</b>                   | 1                 |
| white                          | 21,34 m   70'- 0" |
| height                         | 10,21 m   33'- 6" |
| black                          | 1                 |
| width                          | 21,34 m   70'- 0" |
| height                         | 10,67 m   35'- 0" |
| <b>Cyclorama</b>               | 1                 |
| plastic, cream colored         | 21,34 m   70'- 0" |
| width                          | 12,19 m   40'- 0" |
| height                         |                   |

**Stage manager's desk**

Desk located S.R. only, includes paging microphone, video monitor and intercom station (4 channels)

**Orchestra equipment**

|                  |                    |
|------------------|--------------------|
| 60               | music stands       |
| 80               | stands lights      |
| stage 1          | Conductor's podium |
| pit 1            |                    |
| musician's chair | 85                 |
| stool 10         | black wood 30"     |
| utility chair 50 | Aluminium black    |

**Pianos (piano tuning charges will apply)**

|   |             |              |        |
|---|-------------|--------------|--------|
| 1 | Steinway 9' | D - New York | 440 Hz |
| 1 | Steinway 7' | B - New York | 440 Hz |

**Risers**

|                    |     |               |           |
|--------------------|-----|---------------|-----------|
| plateform          | 32  | 1,22 x 2,44 m | 4' x 8'   |
|                    | 8   | 1,22 x 1,22 m | 4' x 4'   |
| leg                | 64  | 203 mm        | 8"        |
|                    | 64  | 406 mm        | 16"       |
|                    | 112 | 610 mm        | 24"       |
| riser's straircase | 3   | 3 steps       |           |
|                    | 3   | 2 steps       |           |
| riser's wheel      |     | 44            |           |
| dress kit          | 6   | 203 x 4876 mm | 8" x 16'  |
|                    | 7   | 406 x 4876 mm | 16" x 16' |
|                    | 7   | 610 x 4876 mm | 24" x 16' |

**Ground support systems**

|   |                    |                     |            |
|---|--------------------|---------------------|------------|
| 4 | bases+pin          | 24" x 24" - 3 holes | on a dolly |
| 4 | adjustables 7'-12' | horizontal          |            |
| 4 | adjustable 6'-10'  | vertical            |            |
| 3 | black curtain      | 8' x 8'             |            |

**Tables**

|    |        |    |
|----|--------|----|
| 4  | lenght | 4' |
| 4  |        | 6' |
| 12 |        | 8' |

**Lifts**

|               |   |          |         |
|---------------|---|----------|---------|
| (battery, ac) | 1 | Genie    | AWP-36S |
| (ac)          | 1 | Up-Right | UL33    |

**Step ladders**

|          |   |                   |     |
|----------|---|-------------------|-----|
| height : | 2 | Louisville-Werner | 6'  |
|          | 2 |                   | 8'  |
|          | 3 |                   | 10' |
|          | 2 |                   | 12' |

**Dance floor**

|                   |    |             |       |
|-------------------|----|-------------|-------|
| Harlequin Cascade | 10 | 49' x 6'-7" | rolls |
|-------------------|----|-------------|-------|

**Black drum carpet**

|   |         |        |
|---|---------|--------|
| 2 | 4' x 8' | Carpet |
| 2 | 8' x 8' |        |

**Lighting**
**Touring companies (120 / 208 volts)**

|   |   |                  |
|---|---|------------------|
| located stage left                      | 1 | 400 A - cam-lock |
| * connection possibility when available | 1 | 400 A - cam-lock |
| upstage stage left                      | 1 | 100 A - cam-lock |

**Follows spots**

|             |   |               |            |        |
|-------------|---|---------------|------------|--------|
| follow spot | 2 | Robert Juliat | Aramis HMI | 2.5 kw |
|-------------|---|---------------|------------|--------|

**Stage lighting control**

|                               |     |                                 |                |                                      |
|-------------------------------|-----|---------------------------------|----------------|--------------------------------------|
| Main desk (in lighting booth) | 1   | ETC APEX 20                     | 24,576 outputs | with MIDI, SMPTE, 2 Gadget DMX cards |
| Remote control                | 1   | ETCpad                          |                |                                      |
| Secondary desk (stage left)   | 1   | ETC Ion Xe 20                   | 12,288 outputs |                                      |
| Backup system (fixed)         | 1   | APEX Processeur                 | 24,576 outputs |                                      |
| Mobile EOS system             | 1   | Laptop PC with gadget interface |                |                                      |
| 1 dimmer = 1 circuit          |     |                                 |                |                                      |
| dimmers                       | 618 | Strand                          | C-21 / 2.4 Kw  |                                      |
| dimmers                       | 24  | Strand                          | C-21 / 6 Kw    |                                      |
| Electronic soft patch         |     |                                 |                |                                      |

**Fixed equipment**

|                      |    |                          |                |              |
|----------------------|----|--------------------------|----------------|--------------|
| <b>Catwalk (FOH)</b> |    | <b>ETC - Source Four</b> |                |              |
| <b>F.O.H</b>         | 6  | # 0                      | 19°            | 575 w        |
|                      | 24 | # 1st                    | zoom 15° x 30° | 750 w        |
|                      | 24 | # 2nd                    |                | 750 w        |
| <b>Torm doors</b>    | 24 | ETC - S4                 | 26°            | 575 w        |
|                      | 24 |                          | 19°            | 575 w        |
| <b>Scoop bar</b>     | 8  | Iris 4                   |                | 1 Kw         |
| <b>worklights</b>    | 26 | LED                      | white          | non-dimmable |

**Mobile Equipment**

|                                  |     |                                      |             |       |
|----------------------------------|-----|--------------------------------------|-------------|-------|
| <b>bodies</b>                    | 144 | ETC                                  | Source four | 575 w |
| <b>lenses available:</b>         | 36  |                                      | 19°         |       |
|                                  | 64  |                                      | 26°         |       |
|                                  | 60  |                                      | 36°         |       |
|                                  | 18  |                                      | 50°         |       |
| <b>Strand projectors</b>         |     |                                      |             |       |
|                                  | 64  | zoom SL                              | 15° x 32°   | 575 w |
|                                  | 24  |                                      | 23° x 50°   | 575 w |
|                                  | 40  | fresnel 8"                           | 8° x 62°    | 2 Kw  |
|                                  | 10  | fresnel 6"                           | 15° x 59°   | 1 Kw  |
| <b>Altman projectors</b>         | 84  | Par 64                               |             | 1 Kw  |
| <b>Bulbs available:</b>          |     | Wide - Medium - Narrow - Very Narrow |             |       |
|                                  | 40  | Par ACL (simple)                     |             |       |
| <b>ground row (4 x circuits)</b> | 14  | Aurora 4'-4" - ( 1320 mm )           |             | 1 Kw  |

**Lighting accessories**

|                          |    |                               |        |
|--------------------------|----|-------------------------------|--------|
| <b>Gobo holder</b>       | 40 | ETC                           | type A |
|                          | 40 |                               | type B |
|                          | 40 |                               | Strand |
| <b>Iris</b>              | 24 | ETC                           |        |
|                          | 24 | Strand                        |        |
| <b>floor base</b>        | 24 | simple                        |        |
| <b>lighting ladders</b>  | 12 | 30" x 5'                      |        |
| <b>lighting boom</b>     | 12 | 2' - 4' - 6' - 8' - 10' - 12' |        |
| <b>Colorolor filters</b> |    | Roscolux                      |        |

## Sound

**Clause 9.2 of the contract:** The Théâtre Maisonneuve is located above the théâtre Jean-Duceppe. The TENANT agrees to comply to the satisfaction of the SOCIETY the volume of his license at Théâtre Maisonneuve to a maximum of **ninety-six (96) dBc**.

### Touring companies (120 / 208 volts)

|                    |                  |
|--------------------|------------------|
| located stage left | 100 A - cam-lock |
|--------------------|------------------|

### Mixing console

|  |  |  |
|--|--|--|
| Audio mixing position  | Center, last rows(Q,R,S) at Parterre level |  |
| usable width x depth   | 92" x 102"                                 | 2,34m x 2,59m                              |
| mixing digital audio board<br>56 IN / 56 OUT (48 Analog + 8 AES/EBU) | 1  | DIGICO (CORE v2) SD-10 optiCore<br>SD-RACK |
| Available from September to may :<br>40 In / 16 OUT                  | 1  | DIGICO (CORE v2) SD-9<br>D-Rack            |
| 50 balanced lines (mobile on stage)                                  | 1  | multi-patch                                |
| 16 balanced lines (stage left)                                       | 1  | patch box                                  |

### House speaker system

|                                      |     |             |                 |
|--------------------------------------|-----|-------------|-----------------|
| Center sub-bass speaker (fixed)      | 2   | Meyer Sound | 600-HP          |
| Floor sub-bass speaker L + R (fixed) | 2   | Meyer Sound | 900-LFC         |
| Top speaker L + R (fixed)            | 28  | Meyer Sound | MINA            |
| Floor speaker L + R (fixed)          | 2+2 | Meyer Sound | UPQ-1P / UPQ-2P |
| Front fill speaker                   | 6   | Meyer Sound | UP-4XP          |
| Corbeille delay speaker (fixed)      | 2   | EAW         | JF-80           |
| Balcon delay speaker (fixed)         | 4   | Meyer Sound | UPJ-1P          |
| main system processor (fixed)        | 2   | Meyer Sound | Galileo 616     |

### Stage monitor system

|                           |   |             |         |
|---------------------------|---|-------------|---------|
| 8 monitors mix including: |   |             |         |
| passive speaker           | 8 | L'acoustics | X12     |
| amplifier                 | 2 | L'acoustics | LA4X    |
| speaker for side fill     | 2 | Meyer Sound | MSL-4 P |

with tripod, short U-bracket X-US1215 and EMBi

### Playback

|           |   |              |         |
|-----------|---|--------------|---------|
| CD player | 1 | SONY         | CDP-D11 |
| Egalizer  | 1 | Klark teknik | DN-360  |

## Microphones

|    |                           |                  |                      |  |
|----|---------------------------|------------------|----------------------|--|
| 3  | Shure                     | MX393            | Switch on/off        |  |
| 7  |                           | SM-57            |                      |  |
| 7  |                           | SM-58            |                      |  |
| 4  |                           | SM-58S           |                      |  |
| 1  |                           | SM-81            |                      |  |
| 2  |                           | SM-87            |                      |  |
| 1  |                           | SM-91            |                      |  |
| 2  |                           | Beta-98          |                      |  |
| 1  |                           | Beta 52          |                      |  |
| 4  | Neumann                   | KM-184           | with percussion clip |  |
| 1  |                           | TLM-193          |                      |  |
| 6  | Sennheiser                | E604             |                      |  |
| 4  |                           | MD-421           |                      |  |
| 4  |                           | MD-441           |                      |  |
| 3  |                           | MKH-40           |                      |  |
| 2  | AKG                       | MKH-60           |                      | with shockmount clip<br>with shockmount clip<br>with shockmount clip |
| 2  |                           | C-414 ULS        |                      |  |
| 2  |                           | C-414B           |                      |  |
| 1  |                           | C-451            |                      |  |
| 2  | Crown                     | PZM 30RB         |                      |  |
| 4  |                           | PCC 160          |                      |  |
| 4  | Countryman Goose neck 18" |                  |                      |  |
| 3  | Klark teknik              | LBB100 active    |                      |  |
| 6  |                           | DN-100           |                      |  |
| 3  | Radial                    | Pro DI (passive) |                      |  |
| 14 | long with boom            |                  |                      |  |
| 4  | small with boom           |                  |                      |  |
| 4  | long with boom            |                  |                      |  |
| 4  | small with boom           |                  |                      |  |
| 4  | with small boom           |                  |                      |  |
| 4  | table stand               |                  |                      |  |
| 5  |                           |                  |                      |  |

## Communications (digital)

|  |            |          |  |
|--|------------|----------|--|
| fixed stations located in the theater  | CLEAR COM  | HelixNet | 1 stage manager desk, 1 lighting booth, 1 audio rack   |
| Beltpack                               | CLEAR-COM  | HBP-2X   |  |
| Permanent beltpack                     | CLEAR-COM  | HBP-2X   | 1 SR Follow spot, 1 SL Follow spot, 1 loading gallery  |
| desktop station with speaker           | CLEAR-COM  | HKB-2X   |  |
| Permanent desktop station with speaker | CLEAR-COM  | HKB-2X   | 1 Lighting console, 1 Remote console, 1 Prod room, 1 Pin-rail<br>4 2Wire channels and 4 4Wire channels |
| Guest inputs                           | A, B, C, D |          |  |

## Wireless intercom system (digital)

|                                     |   |          |                     |
|-------------------------------------|---|----------|---------------------|
| wireless intercom system (Transmit) | 1 | CLEARCOM | FreeSpeak II base 2 |
| belt pack (Receiver)                | 8 |          | 2,4 Ghz             |

## Hearing-impaired system

|        |         |
|--------|---------|
| DECADE | 89,9 FM |
|--------|---------|

## Projection vidéo

|  |   |                      |                       |
|--|---|----------------------|-----------------------|
| Platform for video projector (Corbeille edge)<br>offset center 36" | 2 | 300 lbs - 135 Kg CMU | 30" depth x 36" Large |
|--|---|----------------------|-----------------------|





**Digital movie / Cinema**

Cinema equipment is available for the exclusive use of digital projections on the cinema screen only. **No adjustment or modification are permitted** on the projector and its lens. A specialized projection technician is required for the commissioning and operation of projection equipment.

**Digital projector**

|                         |   |          |              |       |
|-------------------------|---|----------|--------------|-------|
| digital projector       | 1 | CHRISTIE | Solara 2230  | Fixed |
| high brightness - lense | 1 |          | 1,81 - 3,0:1 | Fixed |
| Video server            | 1 | DOLBY    | IMS2000      | Fixed |
| Audio processor         | 1 |          | CP750        | Fixed |
| cinema scaler           | 1 | Kramer   | VP-734       | Fixed |

**Projection screen**

|        |         |         |
|--------|---------|---------|
| height | 6,25 m  | 20'- 6" |
| width  | 12,80 m | 41'-11" |

Installed with motorized winch on line set # 18

**Audio surround system**

|                   |    |                |              |   |
|-------------------|----|----------------|--------------|---|
| sub-bass speaker* | 2  | Meyer          | 650P         | * parts of the existing P.A. house system |
| L/C/R             | 3  |                | CQ-1P        |   |
| surround          | 16 | OUTLINE        | MOVIE FX 101 |   |
| Processing        | 2  | XILICA XP 8080 |              |   |

# THÉÂTRE MAISONNEUVE

Le dossier technique de la salle, dans lequel sont énumérés les équipements techniques de scène, de son et d'éclairage, ne constitue pas un document contractuel. Veuillez communiquer avec le département technique pour connaître les mises à jour du présent devis.

The technical documentation of the venue that include stage, sound or lighting is not list as a contract. Contact the technical department for an update on this document.

## ACCROCHAGE STANDARD DU THÉÂTRE / HOUSE HANG

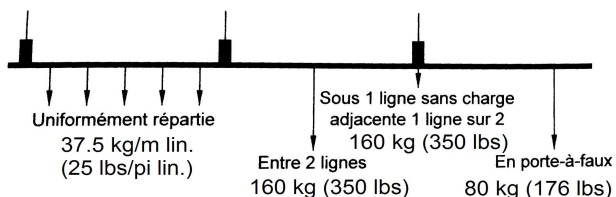
| mètres<br>meters     | pieds<br>feet | équipe<br>set number | description                           | description                               | grandeur<br>mètres / meters | grandeur<br>pieds / feet | date |
|----------------------|---------------|----------------------|---------------------------------------|---|-----------------------------|--------------------------|------|
| 6,25                 | 20'-6"        | avant-scène          | porteuse motorisée (544kg / 1200 lbs) | motorized pipe                            | 14,73                       | 48'0"                    |      |
| 3,20                 | 10'-6"        | avant-scène          | porteuse motorisée (544kg / 1200 lbs) | motorized pipe                            | 14,73                       | 48'0"                    |      |
| <b>Vers la salle</b> |               | ↑                    | 3 x Service DEL (Fixe)                | 3 x LED worklights (Fixed)                |                             |                          |      |
| <b>0,00</b>          | <b>0'-0"</b>  |                      |                                       |   |                             |                          |      |
| <b>Vers la scène</b> |               | ↓                    |                                       |   |                             |                          |      |
| 0,15                 | 0'-6"         |                      | rideau d'amiante (permanent)          | asbestos curtain (permanent)              |                             |                          |      |
| 0,58                 | 1'-11"        | 01                   | <del>rideau-maison (permanent)</del>  | <del>main house curtain (permanent)</del> | out of order                |                          |      |
| 0,86                 | 2'-10"        | 1                    | fond noir # 1                         | black backing # 1                         | 21,34 x 10,67               | 70' x 35'                | 2011 |
| 1,01                 | 3'-4"         | 2                    | pendrillons # 1                       | legs # 1                                  | 4,72 x 10,67                | 15'-6" x 35'             | 2011 |
| 1,16                 | 3'-10"        | 3                    |                                       |   |                             |                          |      |
| 1,32                 | 4'-4"         | 4                    |                                       |   |                             |                          |      |
| 1,49                 | 4'-11"        | 5                    |                                       |   |                             |                          |      |
| 1,67                 | 5'-6"         | 6                    |                                       |   |                             |                          |      |
| 1,87                 | 6'-2½"        | 7                    |                                       |   |                             |                          |      |
| 2,08                 | 6'-10"        | 8                    | 6 x Service DEL (Fixe)                | 6 x LED worklights (Fixed)                |                             |                          |      |
| 2,26                 | 7'-5"         | 9                    |                                       |   |                             |                          |      |
| 2,44                 | 8'-0"         | 10                   |                                       |   |                             |                          |      |
| 2,59                 | 8'-6"         | 11                   |                                       |   |                             |                          |      |
| 2,72                 | 8'-11"        | 12                   | frise # 1                             | border # 1                                | 21,34 x 4,72                | 70' x 15'-6"             | 2011 |
| 2,97                 | 9'-9"         | 13                   | pendrillons # 2                       | legs # 2                                  | 4,72 x 10,67                | 15'-6" x 35'             | 2011 |
| 3,15                 | 10'-4"        | 14                   |                                       |   |                             |                          |      |
| 3,33                 | 10'-11"       | 15                   |                                       |   |                             |                          |      |
| 3,51                 | 11'-6"        | 16                   |                                       |   |                             |                          |      |
| 3,68                 | 12'-1"        | 17                   | frise # 2                             | border # 2                                | 21,34 x 4,72                | 70' x 15'-6"             | 2011 |
| 3,86                 | 12'-8"        | --                   | écran de cinéma (permanent)           | movie screen (permanent)                  |                             |                          |      |
| 4,03                 | 13'-3"        | 19                   |                                       |   |                             |                          |      |
| 4,22                 | 13'-10"       | 20                   |                                       |   |                             |                          |      |
| 4,39                 | 14'-5"        | 21                   |                                       |   |                             |                          |      |
| 4,57                 | 15'-0"        | 22                   | frise # 3                             | border # 3                                | 21,34 x 4,72                | 70' x 15'-6"             | 2011 |
| 4,75                 | 15'-7"        | 23                   | pendrillons # 3                       | legs # 3                                  | 4,72 x 10,67                | 15'-6" x 35'             | 2011 |
| 4,93                 | 16'-2"        | 24                   | 6 x Service DEL (Fixe)                | 6 x LED worklights (Fixed)                |                             |                          |      |
| 5,11                 | 16'-9"        | 25                   |                                       |   |                             |                          |      |
| 5,28                 | 17'-4"        | 26                   |                                       |   |                             |                          |      |
| 5,51                 | 18'-1"        | 27                   |                                       |   |                             |                          |      |
| 5,74                 | 18'-10"       | 28                   |                                       |   |                             |                          |      |
| 5,89                 | 19'-4"        | 29                   |                                       |   |                             |                          |      |
| 6,07                 | 19'-11"       | 30                   |                                       |   |                             |                          |      |
| 6,25                 | 20'-6"        | 31                   |                                       |   |                             |                          |      |
| 6,43                 | 21'-1"        | 32                   |                                       |   |                             |                          |      |
| 6,60                 | 21'-8"        | 33                   |                                       |   |                             |                          |      |
| 6,78                 | 22'-3"        | 34                   | fond noir # 2                         | black backing # 2                         | 21,34 x 10,67               | 70' x 35'                | 2011 |
| 6,96                 | 22'-10"       | 35                   | pendrillons # 4                       | legs # 4                                  | 4,72 x 10,67                | 15'-6" x 35'             | 2011 |
| 7,11                 | 23'-4"        | 36                   |                                       |   |                             |                          |      |
| 7,32                 | 24'-0"        | 37                   |                                       |   |                             |                          |      |
| 7,49                 | 24'-7"        | 38                   |                                       |   |                             |                          |      |
| 7,67                 | 25'-2"        | 39                   | 6 x Service DEL (Fixe)                | 6 x LED worklights (Fixed)                |                             |                          |      |
| 7,85                 | 25'-9"        | 40                   |                                       |   |                             |                          |      |
| 8,03                 | 26'-4"        | 41                   |                                       |   |                             |                          |      |
| 8,23                 | 27'-0"        | 42                   |                                       |   |                             |                          |      |
| 8,46                 | 27'-9"        | 43                   |                                       |   |                             |                          |      |

## ACCROCHAGE STANDARD DU THÉÂTRE / HOUSE HANG

| mètres<br>meters | pieds<br>feet | équipe<br>set number | description                         | description                   | grandeur<br>mètres / meters | grandeur<br>pieds / feet | date |
|------------------|---------------|----------------------|-------------------------------------|-------------------------------|-----------------------------|--------------------------|------|
| 8,66             | 28'-5"        | 44                   |                                     |                               |                             |                          |      |
| 8,84             | 29'-0"        | 45                   |                                     |                               |                             |                          |      |
| 9,02             | 29'-7"        | 46                   | frise # 4                           | border # 4                    | 21,34 x 4,72                | 70' x 15'-6'             | 2011 |
| 9,19             | 30'-2"        | 47                   | pendrillons # 5                     | legs # 5                      | 4,72 x 10,67                | 15'-6" x 35'             |      |
| 9,37             | 30'-9"        | 48                   |                                     |                               |                             |                          |      |
| 9,55             | 31'-4"        | 49                   |                                     |                               |                             |                          |      |
| 9,73             | 31'-11"       | 50                   | fond noir # 3                       | black backing # 3             | 21,34 x 10,67               | 70' x 35'                | 2011 |
| 9,91             | 32'-6"        | 51                   | rideau sur patience (permanent)     | black traveller (permanent)   | (2) 10,67 x 10,67           | (2) 35' x 35'            | 2011 |
| 10,08            | 33'-1"        | 52                   |                                     |                               |                             |                          |      |
| 10,26            | 33'-8"        | 53                   |                                     |                               |                             |                          |      |
| 10,44            | 34'-3"        | 54                   |                                     |                               |                             |                          |      |
| 10,62            | 34'-10"       | 55                   |                                     |                               |                             |                          |      |
| 10,79            | 35'-5"        | 56                   |                                     |                               |                             |                          |      |
| 11,02            | 36'-2"        | 57                   | frise # 5                           | border # 5                    | 21,34 x 4,72                | 70' x 15'-6"             | 2011 |
| 11,25            | 36'-11"       | 58                   | pendrillons # 6                     | legs # 6                      | 4,72 x 10,67                | 15'-6" x 35'             | 2011 |
| 11,40            | 37'-5"        | 59                   |                                     |                               |                             |                          |      |
| 11,58            | 38'-0"        | 60                   | herse d'éclairage du cyc 4 couleurs | cyclorama light bar 4 colours |                             | Fixe                     |      |
| 11,76            | 38'-7"        | 61                   |                                     |                               |                             |                          |      |
| 11,96            | 39'-3"        | 62                   |                                     |                               |                             |                          |      |
| 12,12            | 39'-9"        | 63                   |                                     |                               |                             |                          |      |
| 12,27            | 40'-5"        | 64                   |                                     |                               |                             |                          |      |
| 12,47            | 40'-11"       | 65                   |                                     |                               |                             |                          |      |
| 12,65            | 41'-6"        | 66                   |                                     |                               |                             |                          |      |
| 12,83            | 42'-1"        | 67                   |                                     |                               |                             |                          |      |
| 13,00            | 42'-8"        | 68                   | pendrillons # 7                     | legs # 7                      | 4,72 x 10,67                | 15'-6" x 35'             | 2011 |
| 13,18            | 43'-3"        | 69                   | fond noir # 4                       | black backing # 4             | 21,34 x 10,67               | 70' x 35'                |      |
| 13,36            | 43'-10"       | 70                   |                                     |                               |                             |                          |      |
| 13,54            | 44'-5"        | 71                   | cyclorama p.v.c.                    | cyclorama p.v.c.              | 21,34 x 12,19               | 70' x 40'                |      |
| 13,69            | 44'-11"       | 72                   | fond noir # 5                       | black backing # 5             | 21,34 x 10,67               | 70' x 35'                | 2011 |

\*\* Ouverture des pendrillons / standard opening = 44'

### Perches à contre-poids - Counterweight pipes load (1 à 72 sauf 18) :

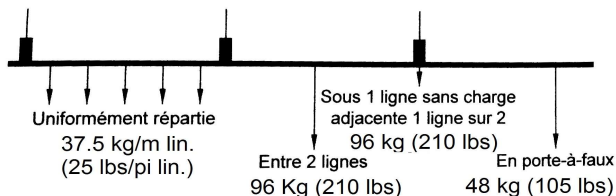


Longueur porteuse  
**22,9m (75'-3")**

Charge maximale

**517 kg (1140 lbs)**

### Perches motorisées d'avant-scène - FOH motorized pipes load (F1 & F2) :



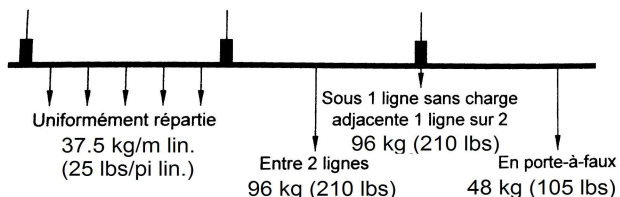
Longueur porteuse

**14,6 m (48')**

Charge maximale

**544 kg (1200 lbs)**

### Perches motorisées allemandes - German motorized pipes load (C3-AS & LT, J3-AS & LT) :

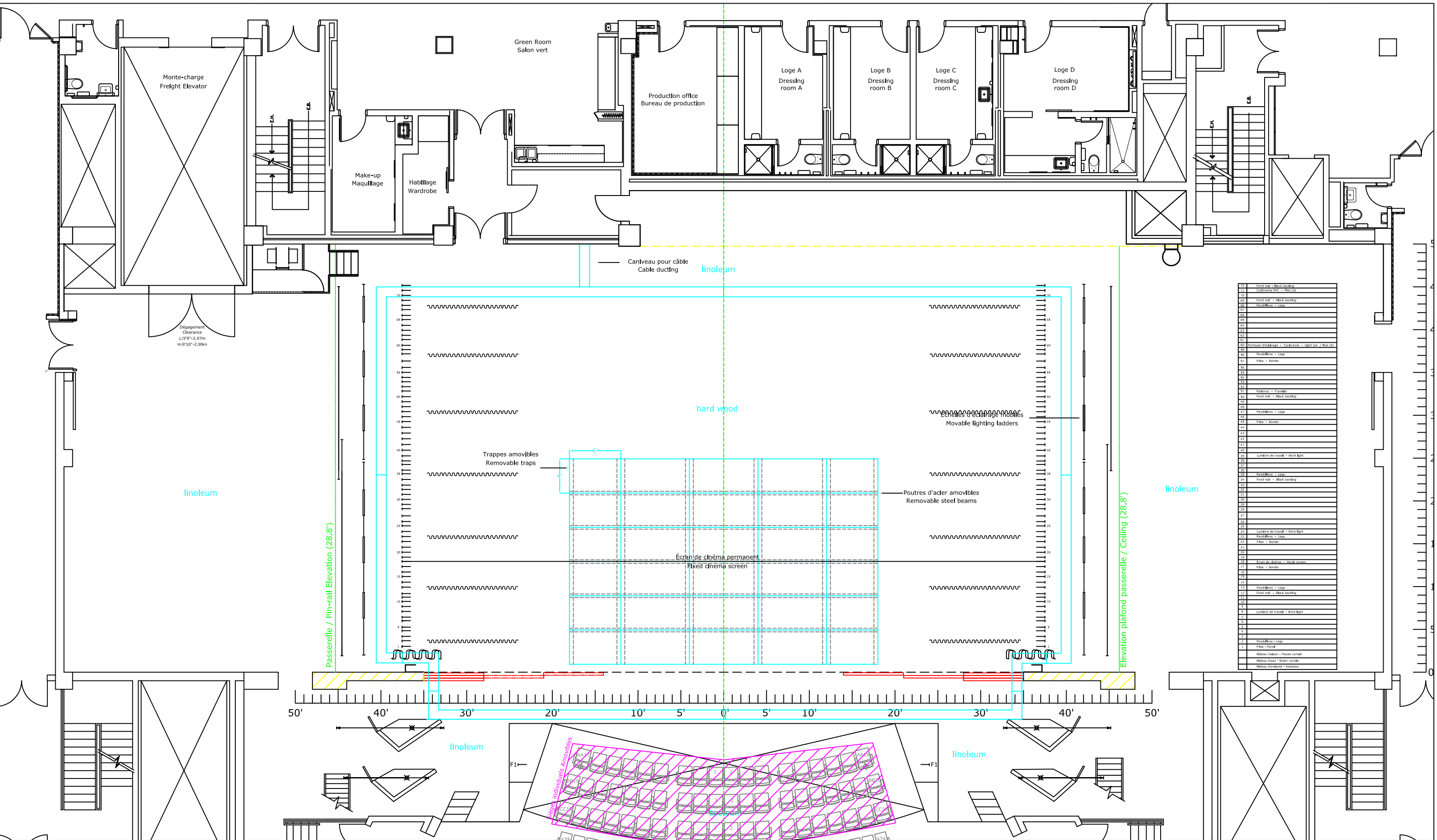


Longueur porteuse

**7,3m (24')**

Charge maximale

**250 kg (550 lbs)**



|     |                           |
|-----|---------------------------|
| 74  | Fond noir - Black backing |
| 75  | Cyclorama POC - Plac (C)  |
| 76  | Fond noir - Black backing |
| 77  | PendBlocs - Legs          |
| 78  | 78                        |
| 79  | 79                        |
| 80  | 79                        |
| 81  | 80                        |
| 82  | 80                        |
| 83  | 80                        |
| 84  | 80                        |
| 85  | 80                        |
| 86  | 80                        |
| 87  | 80                        |
| 88  | 80                        |
| 89  | 80                        |
| 90  | 80                        |
| 91  | 80                        |
| 92  | 80                        |
| 93  | 80                        |
| 94  | 80                        |
| 95  | 80                        |
| 96  | 80                        |
| 97  | 80                        |
| 98  | 80                        |
| 99  | 80                        |
| 100 | 80                        |
| 101 | 80                        |
| 102 | 80                        |
| 103 | 80                        |
| 104 | 80                        |
| 105 | 80                        |
| 106 | 80                        |
| 107 | 80                        |
| 108 | 80                        |
| 109 | 80                        |
| 110 | 80                        |
| 111 | 80                        |
| 112 | 80                        |
| 113 | 80                        |
| 114 | 80                        |
| 115 | 80                        |
| 116 | 80                        |
| 117 | 80                        |
| 118 | 80                        |
| 119 | 80                        |
| 120 | 80                        |
| 121 | 80                        |
| 122 | 80                        |
| 123 | 80                        |
| 124 | 80                        |
| 125 | 80                        |
| 126 | 80                        |
| 127 | 80                        |
| 128 | 80                        |
| 129 | 80                        |
| 130 | 80                        |
| 131 | 80                        |
| 132 | 80                        |
| 133 | 80                        |
| 134 | 80                        |
| 135 | 80                        |
| 136 | 80                        |
| 137 | 80                        |
| 138 | 80                        |
| 139 | 80                        |
| 140 | 80                        |
| 141 | 80                        |
| 142 | 80                        |
| 143 | 80                        |
| 144 | 80                        |
| 145 | 80                        |
| 146 | 80                        |
| 147 | 80                        |
| 148 | 80                        |
| 149 | 80                        |
| 150 | 80                        |
| 151 | 80                        |
| 152 | 80                        |
| 153 | 80                        |
| 154 | 80                        |
| 155 | 80                        |
| 156 | 80                        |
| 157 | 80                        |
| 158 | 80                        |
| 159 | 80                        |
| 160 | 80                        |
| 161 | 80                        |
| 162 | 80                        |
| 163 | 80                        |
| 164 | 80                        |
| 165 | 80                        |
| 166 | 80                        |
| 167 | 80                        |
| 168 | 80                        |
| 169 | 80                        |
| 170 | 80                        |
| 171 | 80                        |
| 172 | 80                        |
| 173 | 80                        |
| 174 | 80                        |
| 175 | 80                        |
| 176 | 80                        |
| 177 | 80                        |
| 178 | 80                        |
| 179 | 80                        |
| 180 | 80                        |
| 181 | 80                        |
| 182 | 80                        |
| 183 | 80                        |
| 184 | 80                        |
| 185 | 80                        |
| 186 | 80                        |
| 187 | 80                        |
| 188 | 80                        |
| 189 | 80                        |
| 190 | 80                        |
| 191 | 80                        |
| 192 | 80                        |
| 193 | 80                        |
| 194 | 80                        |
| 195 | 80                        |
| 196 | 80                        |
| 197 | 80                        |
| 198 | 80                        |
| 199 | 80                        |
| 200 | 80                        |
| 201 | 80                        |
| 202 | 80                        |
| 203 | 80                        |
| 204 | 80                        |
| 205 | 80                        |
| 206 | 80                        |
| 207 | 80                        |
| 208 | 80                        |
| 209 | 80                        |
| 210 | 80                        |
| 211 | 80                        |
| 212 | 80                        |
| 213 | 80                        |
| 214 | 80                        |
| 215 | 80                        |
| 216 | 80                        |
| 217 | 80                        |
| 218 | 80                        |
| 219 | 80                        |
| 220 | 80                        |
| 221 | 80                        |
| 222 | 80                        |
| 223 | 80                        |
| 224 | 80                        |
| 225 | 80                        |
| 226 | 80                        |
| 227 | 80                        |
| 228 | 80                        |
| 229 | 80                        |
| 230 | 80                        |
| 231 | 80                        |
| 232 | 80                        |
| 233 | 80                        |
| 234 | 80                        |
| 235 | 80                        |
| 236 | 80                        |
| 237 | 80                        |
| 238 | 80                        |
| 239 | 80                        |
| 240 | 80                        |
| 241 | 80                        |
| 242 | 80                        |
| 243 | 80                        |
| 244 | 80                        |
| 245 | 80                        |
| 246 | 80                        |
| 247 | 80                        |
| 248 | 80                        |
| 249 | 80                        |
| 250 | 80                        |
| 251 | 80                        |
| 252 | 80                        |
| 253 | 80                        |
| 254 | 80                        |
| 255 | 80                        |
| 256 | 80                        |
| 257 | 80                        |
| 258 | 80                        |
| 259 | 80                        |
| 260 | 80                        |
| 261 | 80                        |
| 262 | 80                        |
| 263 | 80                        |
| 264 | 80                        |
| 265 | 80                        |
| 266 | 80                        |
| 267 | 80                        |
| 268 | 80                        |
| 269 | 80                        |
| 270 | 80                        |
| 271 | 80                        |
| 272 | 80                        |
| 273 | 80                        |
| 274 | 80                        |
| 275 | 80                        |
| 276 | 80                        |
| 277 | 80                        |
| 278 | 80                        |
| 279 | 80                        |
| 280 | 80                        |
| 281 | 80                        |
| 282 | 80                        |
| 283 | 80                        |
| 284 | 80                        |
| 285 | 80                        |
| 286 | 80                        |
| 287 | 80                        |
| 288 | 80                        |
| 289 | 80                        |
| 290 | 80                        |
| 291 | 80                        |
| 292 | 80                        |
| 293 | 80                        |
| 294 | 80                        |
| 295 | 80                        |
| 296 | 80                        |
| 297 | 80                        |
| 298 | 80                        |
| 299 | 80                        |
| 300 | 80                        |



Salle / Location:

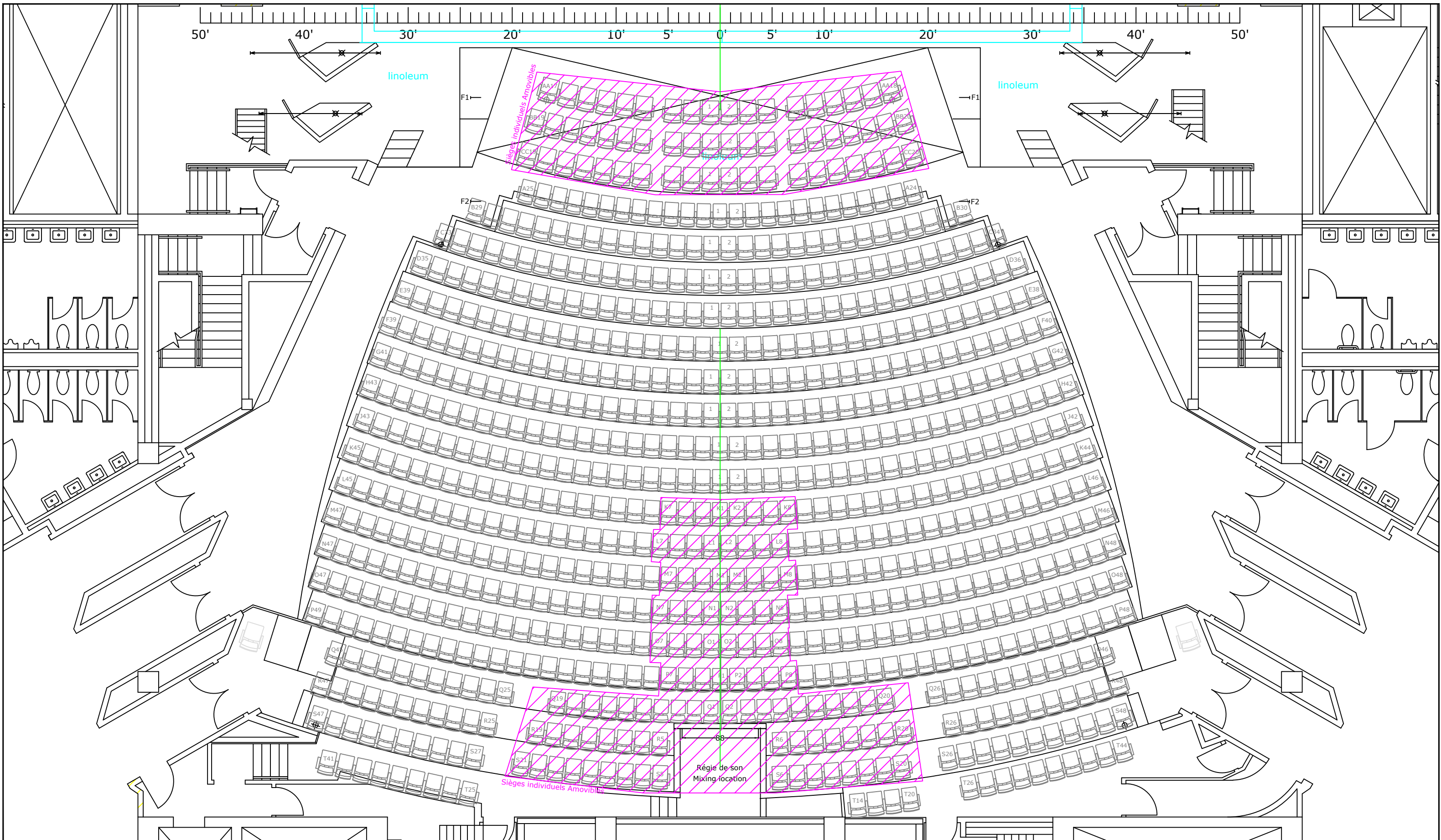
# THÉÂTRE MAISONNEUVE

175, rue Sainte -Catherine ouest, Montréal (Qc) H2X 1Z8

Titre / Title:

VUE EN PLAN - SCÈNE  
PLAN VIEW AT STAGE LEVEL

|  |                               |
|--|-------------------------------|
| Dessin / Drawing:<br>PDA-TM-1_AI                 |                               |
| Échelle / Scale:<br>Voir règle - See ruler       | Date:<br>Sept / September '16 |
| Format:<br>Architecturale / Impérial<br>11"x 17" |                               |



**Place  
des  
Arts**

Salle / Location:

**THÉÂTRE MAISONNEUVE**  
175, rue Sainte-Catherine ouest, Montréal (Qc) H2X 1Z8

Titre / Title:

**VUE EN PLAN - SIÈGES**  
PLAN VIEW AT STAGE LEVEL - SEATS

Dessin / Drawing:

PDA-TM-1\_AI

Échelle / Scale:

Voir règle - See ruler

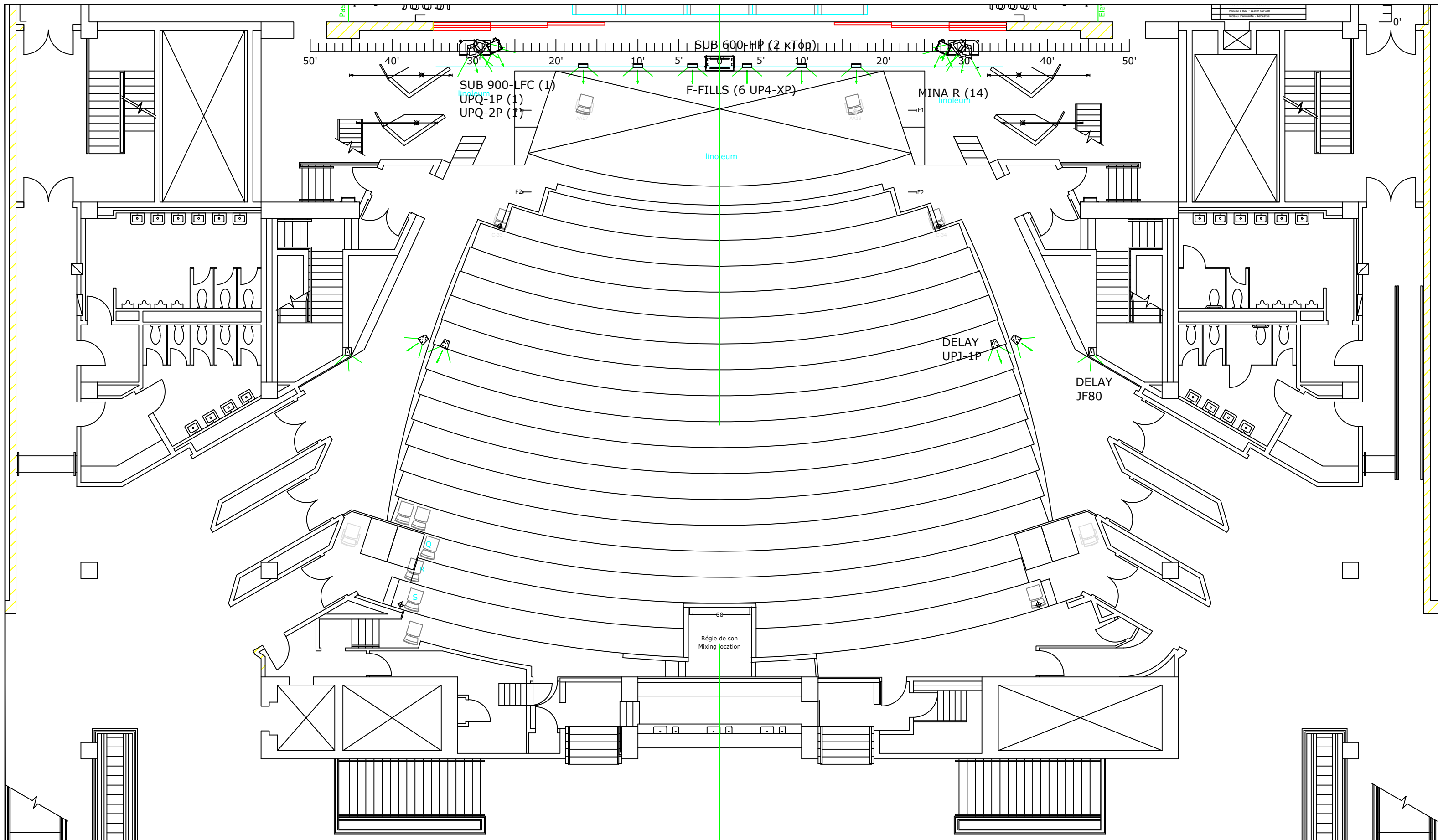
Date:

March/Mars '16

Format:

Architecturale / Impérial

11"x 17"



**Place  
des  
Arts**

Salle / Location:

**THÉÂTRE MAISONNEUVE**  
175, rue Sainte-Catherine ouest, Montréal (Qc) H2X 1Z8

Titre / Title:

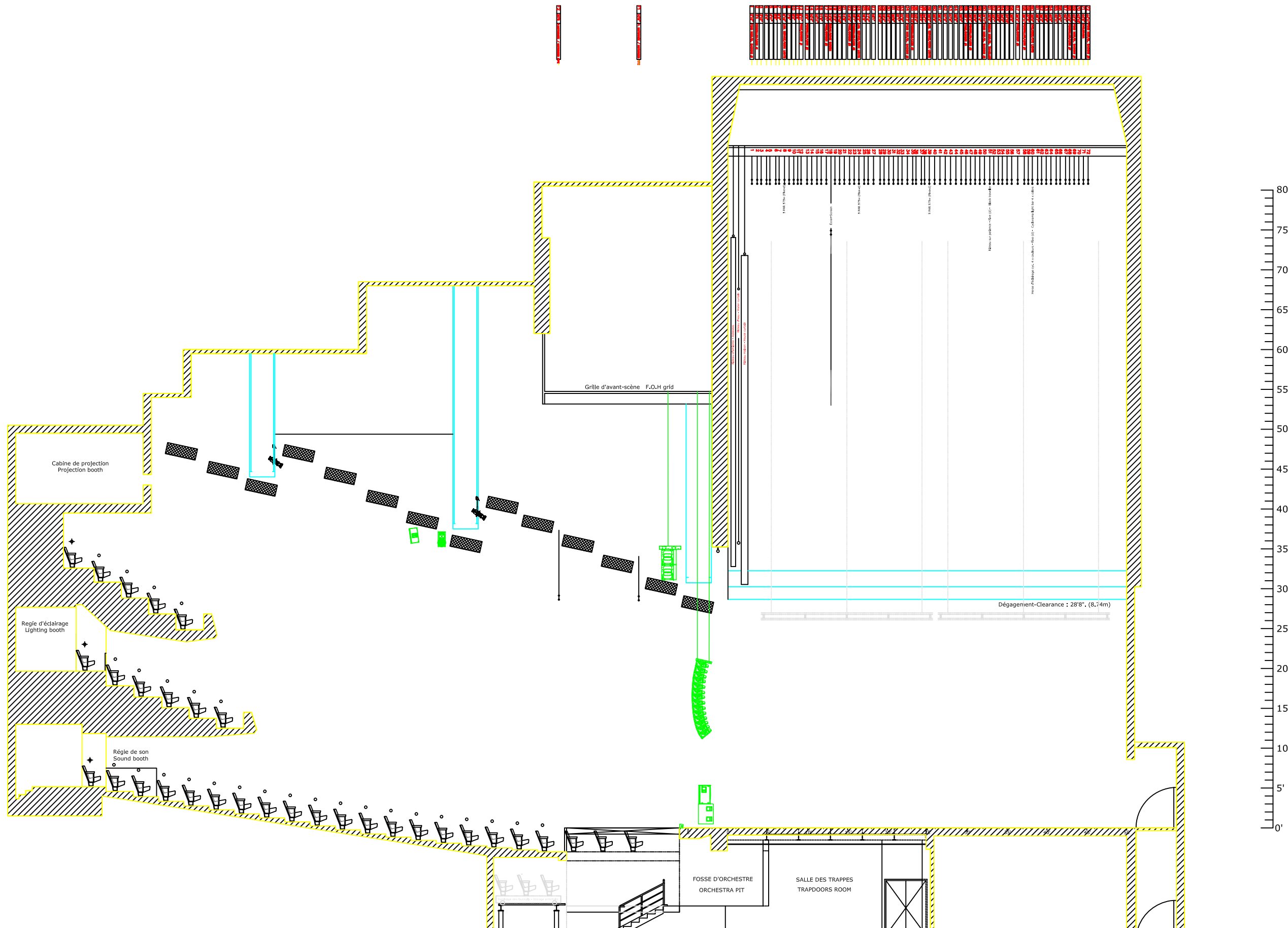
**VUE EN PLAN - AUDIO**  
**PLAN VIEW AT STAGE LEVEL - AUDIO**

Dessin / Drawing:  
PDA-TM-1\_AI

Échelle / Scale:  
Voir règle - See ruler

Date:  
Sept / Septembre '19

Format:  
Architecturale / Impérial  
11"x 17"



Salle / Location:

# THÉÂTRE MAISONNEUVE

175, rue Sainte -Catherine ouest, Montréal (Qc) H2X 1Z8

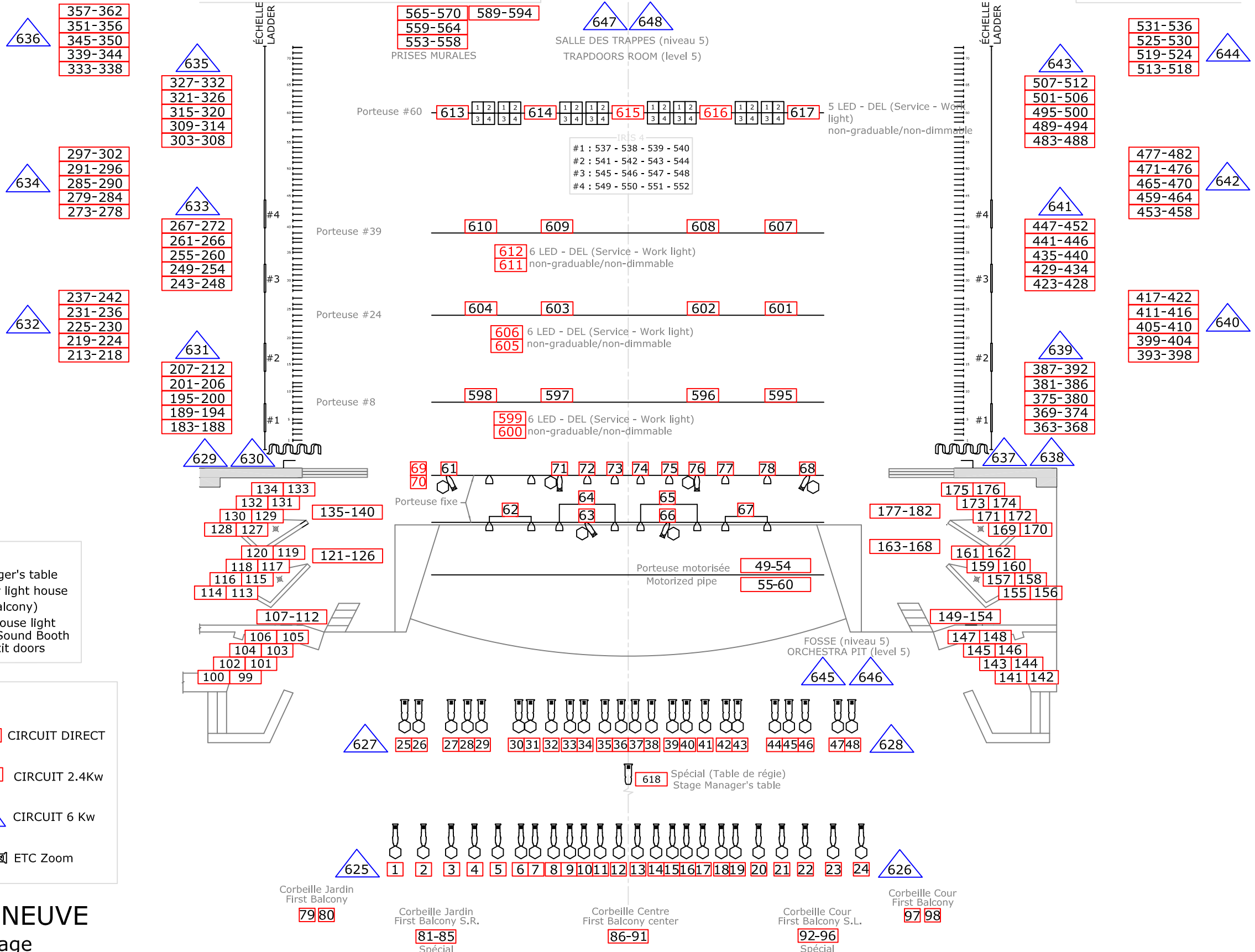
Titre /Title:

## COUPE LONGITUDINALE SECTION VIEW

|  |                             |
|--|-----------------------------|
| DessIn /Drawing:<br>PDA-TM-2_AI                  |                             |
| Échelle / Scale:<br>Voir règle - See ruler       | Date:<br>Janv / January '21 |
| Format:<br>Architecturale / Impérial<br>11"x 17" |                             |

36' 33' 30' 27' 24' 21' 18' 15' 12' 9' 6' 3' 0' 3' 6' 9' 12' 15' 18' 21' 24' 27' 30' 33' 36'

PRISES MURALES  
 583-588  
 577-582  
 571-576



**DIVERS**  
 618 Table de régie - Stage manager's table  
 086 Lumière centre salle - Center light house (Niveau corbeille - First balcony)  
 1001 à 1015 Lumière de salle - House light  
 1016 Régie son Parterre - Parterre Sound Booth  
 1017 à 1019 Portes Sorties - Exit doors

**LÉGENDE / LEGEND**

COULEUR/COLOR

- SOURCE IV 19° **611** CIRCUIT DIRECT
- SOURCE IV 26° **114** CIRCUIT 2.4KW
- PAR - ETC
- ETC Zoom
- CIRCUIT 6 Kw

**THÉÂTRE MAISONNEUVE**  
 Circuiteries d'éclairage

Salle / Location:

**THÉÂTRE MAISONNEUVE**  
 175, rue Sainte -Catherine ouest, Montréal (Qc) H2X 1Z8

Titre /Title:

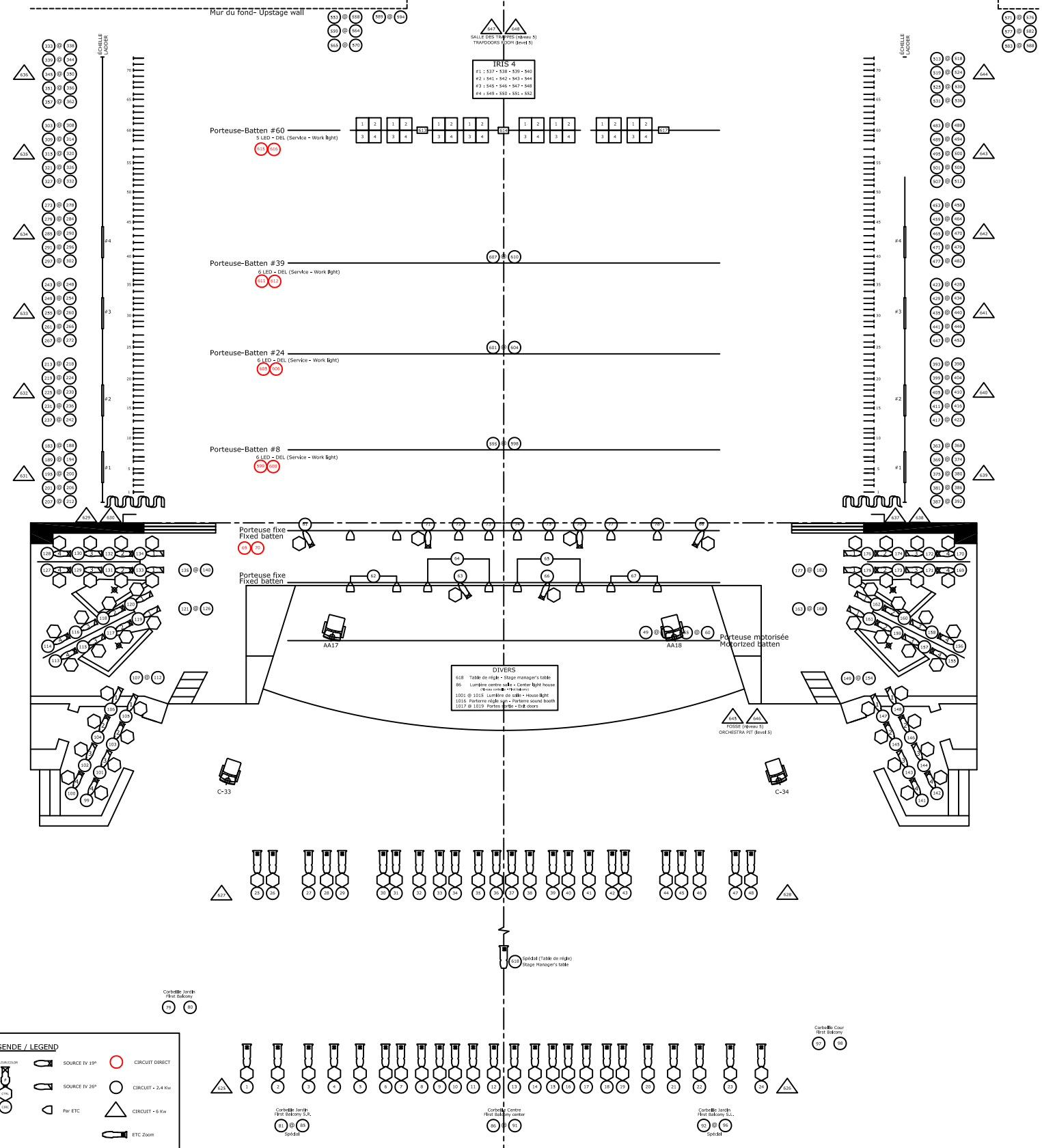
**Plan des circuits d'éclairage**  
 Lighting plot of circuiteries

Dessin /Drawing: PDA-TM-4\_AI  
 Échelle / Scale: Voir règle - See ruler  
 Date: May / Mai 2024  
 Format: Architecturale / Impérial  
 11"x 17"

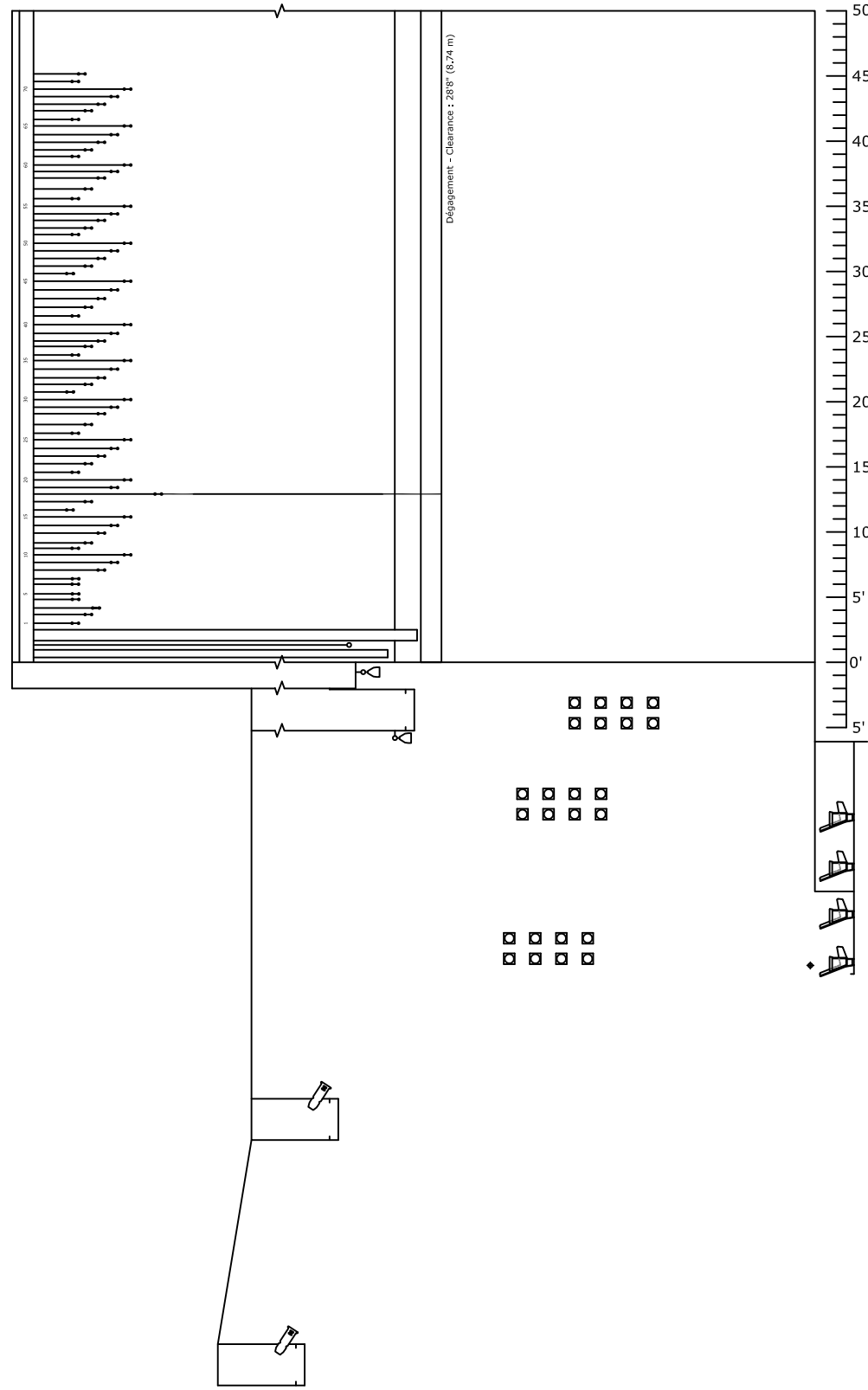




36' 33' 30' 27' 24' 21' 18' 15' 12' 9' 6' 3' 0 3' 6' 9' 12' 15' 18' 21' 24' 27' 30' 33' 36'



|     |                               |
|-----|-------------------------------|
| 87  | Pointe de scène - Stage light |
| 88  | Pointe de scène - Stage light |
| 89  | Pointe de scène - Stage light |
| 90  | Pointe de scène - Stage light |
| 91  | Pointe de scène - Stage light |
| 92  | Pointe de scène - Stage light |
| 93  | Pointe de scène - Stage light |
| 94  | Pointe de scène - Stage light |
| 95  | Pointe de scène - Stage light |
| 96  | Pointe de scène - Stage light |
| 97  | Pointe de scène - Stage light |
| 98  | Pointe de scène - Stage light |
| 99  | Pointe de scène - Stage light |
| 100 | Pointe de scène - Stage light |
| 101 | Pointe de scène - Stage light |
| 102 | Pointe de scène - Stage light |
| 103 | Pointe de scène - Stage light |
| 104 | Pointe de scène - Stage light |
| 105 | Pointe de scène - Stage light |
| 106 | Pointe de scène - Stage light |
| 107 | Pointe de scène - Stage light |
| 108 | Pointe de scène - Stage light |
| 109 | Pointe de scène - Stage light |
| 110 | Pointe de scène - Stage light |
| 111 | Pointe de scène - Stage light |
| 112 | Pointe de scène - Stage light |
| 113 | Pointe de scène - Stage light |
| 114 | Pointe de scène - Stage light |
| 115 | Pointe de scène - Stage light |
| 116 | Pointe de scène - Stage light |
| 117 | Pointe de scène - Stage light |
| 118 | Pointe de scène - Stage light |
| 119 | Pointe de scène - Stage light |
| 120 | Pointe de scène - Stage light |
| 121 | Pointe de scène - Stage light |
| 122 | Pointe de scène - Stage light |
| 123 | Pointe de scène - Stage light |
| 124 | Pointe de scène - Stage light |
| 125 | Pointe de scène - Stage light |
| 126 | Pointe de scène - Stage light |
| 127 | Pointe de scène - Stage light |
| 128 | Pointe de scène - Stage light |
| 129 | Pointe de scène - Stage light |
| 130 | Pointe de scène - Stage light |
| 131 | Pointe de scène - Stage light |
| 132 | Pointe de scène - Stage light |
| 133 | Pointe de scène - Stage light |
| 134 | Pointe de scène - Stage light |
| 135 | Pointe de scène - Stage light |
| 136 | Pointe de scène - Stage light |
| 137 | Pointe de scène - Stage light |
| 138 | Pointe de scène - Stage light |
| 139 | Pointe de scène - Stage light |
| 140 | Pointe de scène - Stage light |
| 141 | Pointe de scène - Stage light |
| 142 | Pointe de scène - Stage light |
| 143 | Pointe de scène - Stage light |
| 144 | Pointe de scène - Stage light |
| 145 | Pointe de scène - Stage light |
| 146 | Pointe de scène - Stage light |
| 147 | Pointe de scène - Stage light |
| 148 | Pointe de scène - Stage light |
| 149 | Pointe de scène - Stage light |
| 150 | Pointe de scène - Stage light |
| 151 | Pointe de scène - Stage light |
| 152 | Pointe de scène - Stage light |
| 153 | Pointe de scène - Stage light |
| 154 | Pointe de scène - Stage light |
| 155 | Pointe de scène - Stage light |
| 156 | Pointe de scène - Stage light |
| 157 | Pointe de scène - Stage light |
| 158 | Pointe de scène - Stage light |
| 159 | Pointe de scène - Stage light |
| 160 | Pointe de scène - Stage light |
| 161 | Pointe de scène - Stage light |
| 162 | Pointe de scène - Stage light |
| 163 | Pointe de scène - Stage light |
| 164 | Pointe de scène - Stage light |
| 165 | Pointe de scène - Stage light |
| 166 | Pointe de scène - Stage light |
| 167 | Pointe de scène - Stage light |
| 168 | Pointe de scène - Stage light |
| 169 | Pointe de scène - Stage light |
| 170 | Pointe de scène - Stage light |
| 171 | Pointe de scène - Stage light |
| 172 | Pointe de scène - Stage light |
| 173 | Pointe de scène - Stage light |
| 174 | Pointe de scène - Stage light |
| 175 | Pointe de scène - Stage light |
| 176 | Pointe de scène - Stage light |
| 177 | Pointe de scène - Stage light |
| 178 | Pointe de scène - Stage light |
| 179 | Pointe de scène - Stage light |
| 180 | Pointe de scène - Stage light |
| 181 | Pointe de scène - Stage light |
| 182 | Pointe de scène - Stage light |
| 183 | Pointe de scène - Stage light |
| 184 | Pointe de scène - Stage light |
| 185 | Pointe de scène - Stage light |
| 186 | Pointe de scène - Stage light |
| 187 | Pointe de scène - Stage light |
| 188 | Pointe de scène - Stage light |
| 189 | Pointe de scène - Stage light |
| 190 | Pointe de scène - Stage light |
| 191 | Pointe de scène - Stage light |
| 192 | Pointe de scène - Stage light |
| 193 | Pointe de scène - Stage light |
| 194 | Pointe de scène - Stage light |
| 195 | Pointe de scène - Stage light |
| 196 | Pointe de scène - Stage light |
| 197 | Pointe de scène - Stage light |
| 198 | Pointe de scène - Stage light |
| 199 | Pointe de scène - Stage light |
| 200 | Pointe de scène - Stage light |



**LÉGENDE / LEGEND**

|  |               |  |                  |
|--|---------------|--|------------------|
|  | SOURCE IV 20" |  | CIRCUIT DIRECT   |
|  | SOURCE IV 20" |  | CIRCUIT - 2.4 Kw |
|  | Par ETC       |  | CIRCUIT - 6 Kw   |
|  | ETC Zoom      |  | ETC Zoom         |



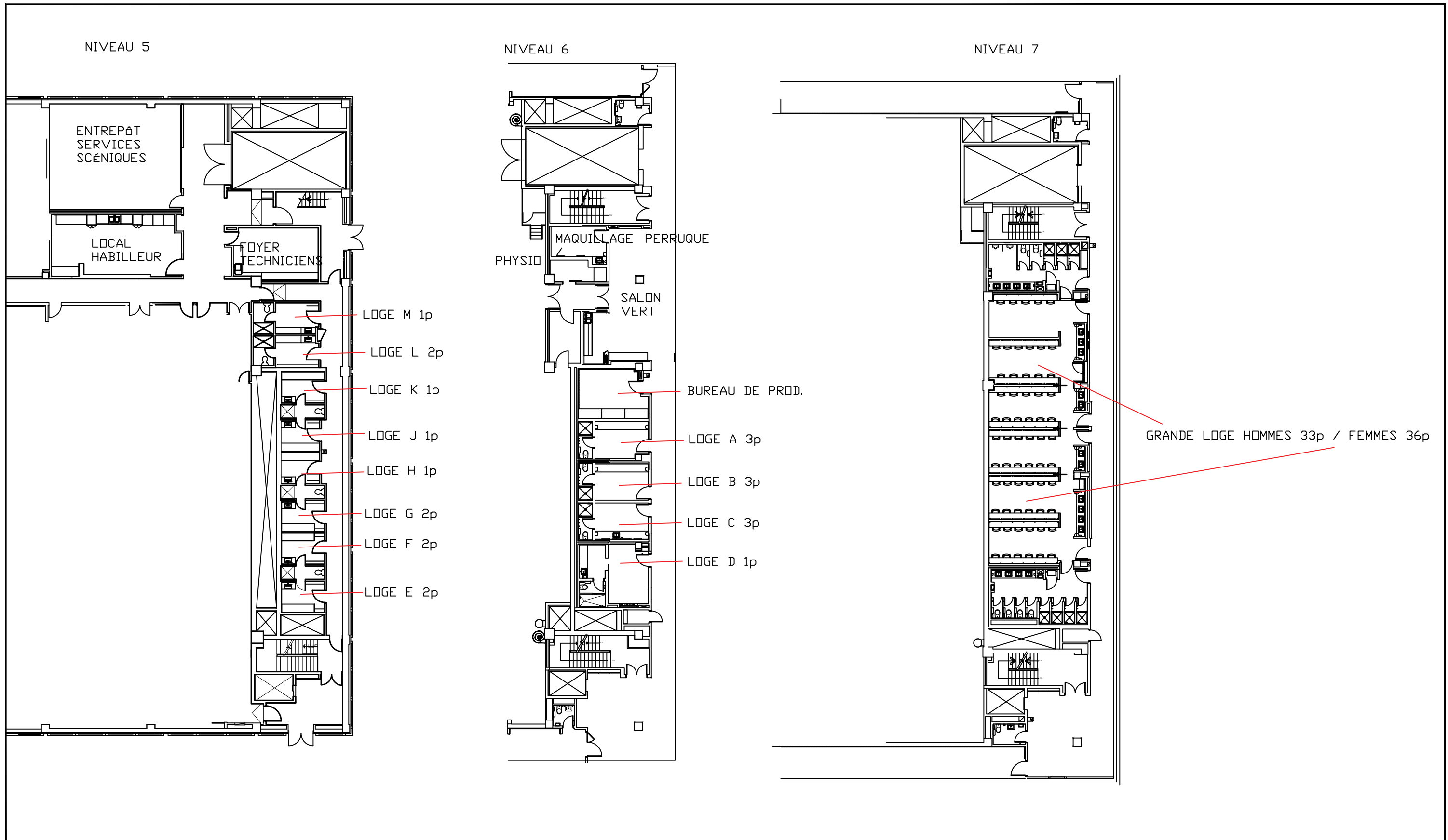
Salle / Location:

**THÉÂTRE MAISONNEUVE**  
175, rue Sainte -Catherine ouest, Montréal (Qc) H2X 1Z8

Titre /Title:

**ÉCLAIRAGE - LIGHTING**  
VUE EN PLAN/COUPE  
PLAN/SECTION VIEW

|  |                       |
|--|-----------------------|
| Dessin /Drawing:<br>PDA-TM-4_AI 2013             |                       |
| Échelle / Scale:<br>Voir règle - See ruler       | Date:<br>May/Mai 2024 |
| Format:<br>Architecturale / Impérial<br>11"x 17" |                       |



Place  
des  
Arts

Salle / Location:

**THÉÂTRE MAISONNEUVE**  
175, rue Sainte-Catherine ouest, Montréal (Qc) H2X 1Z8

Titre / Title:

Vue en Plan - LOGES  
5, 6, 7 Étages (floor)

|                  |                   |
|------------------|-------------------|
| Echelle / Scale: | Date:             |
| Format:          | March / Mars 2019 |
| 11'x 17'         |                   |