

The technical documentation of the venue that include stage, sound or lighting is not list as a contract. Contact the technical department for an update on this document.

General Informations

House

	Seating	Normal
seating capacity for booking		1435
house seats		12
parterre (including house seats and orchestra pit)		818
Corbeille		334
Balcon		295
Total		1447
Removable seats (one by one)		101
row, seat number	Q	1 à 20 / 1 to 20
"	R	5 à 20 / 5 to 20
"	S	5 à 21 / 5 to 21
"	K, L, M, N, O, P	1 à 8 / 1 to 8
Orchestra pits		55 musicians
rows	rows AA, BB and CC are removed. total: 58 seats	
Capacity for booking		1377
House dimensions		
from house curtain to last row of the house	24,46m	80'-3"
from house curtain to last row in balcony	28,19m	92'-6"
From Corbeille edge to Cyclorama (Projection)	31,24m	102'6"

Artist entrance

1400 St.Urbain street

Tour bus service	2	Nema 14-50R	50A - 208V	location : loading dock
------------------	---	-------------	------------	-------------------------

Loading dock

1410 St.Urbain street

At street level, the stage of the theater is located two levels above the street.

Sets, costumes and properties have to be transported to the stage by elevator.

Loading platform dimensions		
width	9,58 m	31'-5"
length	13,11 m	43'-0"
height (street level)	4,11 m	13'-6"
height (loading dock floor to ceiling)	3,04 m	10'-0"

Two trailers (without tractors) can be parked inside the garage with doors closed.

Elevator		
Maximum allowed weight	6,8 T	15 000 lbs
width	3,48 m	11'-5"
length	7,77 m	25'-6"
height	3,48 m	11'-5"

Elevator door		
width	2,97 m	9'-9"
length	3,00 m	9'-10"

all objects must not exceed 23 feet (7,0 m)

Chain Hoist for roadcases SR (Unstacking...)	1	1000 Kg	2200 lbs
---	---	---------	----------

Production offices
Production offices - Level 6, stage level

 located backstage, 3 persons
 telephone :

514-285-4399

Dressing rooms
DRESSING ROOMS - Level 6, stage level

 3 persons toilet - shower
 3 persons toilet - shower
 3 persons toilet - shower
 1 person toilet - shower
 Make-up room or dressing room 2 persons

Loge A
Loge B
Loge C
Loge D
Make-up room

DRESSING ROOMS - Level 5

 2 persons toilet - shower (shared with F)
 2 persons toilet - shower (shared with E)
 2 persons toilet - shower (shared with H)
 1 person toilet - shower (shared with G)
 1 person toilet - shower (shared with K)
 2 persons toilet - shower (shared with J)
 2 persons toilet - shower
 1 person toilet - shower

Loge E
Loge F
Loge G
Loge H
Loge J
Loge K
Loge L
Loge M

Musician's room (12 persons)

 width
 length

Room of honour	
6,20 m	20'- 4"
5,46 m	17'-11"

(69 persons) - toilets and showers

LARGE DRESSING ROOM - Level 7

36 women / 33 men

Wardrobe room
DRESSING ROOMS - Level 5

NB: wardrobe employees are members of IATSE local 863.

9,4 m x 3,6 m	31' x 12'
---------------	-----------

1	sink
3	washing machine
3	dryer machine
2	flat iron
2	Jiffy steamer
1	Sewing machine
2	quick change 8' x 8'

Rehearsal rooms

available upon request

Stage

Stage description and dimensions

General rule

It is strictly forbidden to screw, nail or staple into the stage floor
Production or visiting company must find alternatives ways to secure and anchor their stage equipment or scenery.
In exceptional circumstances, anchors might be permitted upon prior arrangement and autorisation, in this eventuality, cost will apply.

Wings and stage area capacities

Stage floor	wooden stage floor covered with linoleum (battleship), except playing area.	
Allowed load on the stage floor	kg / m ²	lbs/pi ² - pound/foot ²
	650	150
Proscenium height	0,97 m	3'- 2"
Proscenium opening	maximum height	8,23 m / 27'- 0"
	minimum height	5,47 m / 18'- 0"
	maximum width	17,00 m / 55'- 9"
	minimum width	9,02 m / 29'- 7"
Stage dimensions	Total width	46,81 m / 153'- 7"
	from center line to S.R. wall	23,39 m / 76'- 9"
	from center line to S.L. wall	23,42 m / 76'- 10"
Total depth (excluding pit)	from house curtain to back wall	17,86 m / 58'- 7"
	from house curtain to orchestra pit	16,31 m / 53'- 6"
	from house curtain to orchestra pit	1,55 m / 5'- 1"
	from house curtain to apron	6,81 m / 22'- 4"
Height from stage floor to grid	clearance under fly gallery SR	25,90 m / 85'- 0"
	clearance under fly gallery SR	8,22 m / 27'- 0"
	clearance under fly gallery SL	8,22 m / 27'- 0"
Wing space, stage right	width	14,05 m / 46'-10"
	length	12,19 m / 40'- 0"
Wing space, stage left	width	13,74 m / 45'-10"
	length	12,88 m / 42'- 3"

Rigging system

Fly system : Double purchase counterweight system

* operated from S.R. fly gallery

pipe's length	22,94 m	75'- 3"
number of sets *	72	
* maximum loading capacity	517 kg	1140 lbs

* see the line plot for house hang.

* The motorized movie screen is fixed and it is for film projection only. (Position between lineset #17 and #19)

Motorized side pipe :

maximum loading capacity	250 Kg	550 lbs
--------------------------	--------	---------

Motorized pipe in front of the proscenium

	2	
pipe's length	14,63 m	48'
* maximum loading capacity	544 Kg	1200 lbs

Main Power (208V) and Chain Hoist

at grid level	1	60 A - cam-lock	
Subject to availability and billable:			
Chain hoists 1T double-brake, 100', 4,8 m/min	4	ChainMaster	BGV D8
Chain Hoist controller	1		
Chain Hoist to lift video projector at Corbeille edge	1	ChainMaster	250 Kg

Unavailable between may till september

fixed

Stage masking

House curtain	Fabric (yellow, orange and brown) with center opening. operated from stage right. Fly type (up and down)																				
Stage curtains (black velvet) legs standard opening * see the house hang	<table border="1"><tr><td>13,41 m</td><td>44'- 0"</td></tr></table>	13,41 m	44'- 0"		44'-0" STRAIT EDGE																
13,41 m	44'- 0"																				
sets of legs	<table border="1"><tr><td colspan="2">7</td></tr><tr><td>width</td><td>4,72 m</td><td>15'- 6"</td></tr><tr><td>length</td><td>10,67 m</td><td>35'- 0"</td></tr></table>		7		width	4,72 m	15'- 6"	length	10,67 m	35'- 0"											
7																					
width	4,72 m	15'- 6"																			
length	10,67 m	35'- 0"																			
borders	<table border="1"><tr><td colspan="2">5</td></tr><tr><td>width</td><td>21,34 m</td><td>70'- 0"</td></tr><tr><td>height</td><td>4,72 m</td><td>15'- 6"</td></tr></table>		5		width	21,34 m	70'- 0"	height	4,72 m	15'- 6"											
5																					
width	21,34 m	70'- 0"																			
height	4,72 m	15'- 6"																			
full back drops	<table border="1"><tr><td colspan="2">5</td></tr><tr><td>width</td><td>21,48 m</td><td>70'- 0"</td></tr><tr><td>height</td><td>10,67 m</td><td>35'- 0"</td></tr></table>		5		width	21,48 m	70'- 0"	height	10,67 m	35'- 0"											
5																					
width	21,48 m	70'- 0"																			
height	10,67 m	35'- 0"																			
half backing (traveler)	<table border="1"><tr><td colspan="2">2</td></tr><tr><td>width</td><td>10,67 m</td><td>35'- 0"</td></tr><tr><td>height</td><td>10,67 m</td><td>35'- 0"</td></tr></table>		2		width	10,67 m	35'- 0"	height	10,67 m	35'- 0"											
2																					
width	10,67 m	35'- 0"																			
height	10,67 m	35'- 0"																			
Germans (side curtains)	<table border="1"><tr><td colspan="2">6</td></tr><tr><td>width</td><td>4,72 m</td><td>15'- 6"</td></tr><tr><td>height</td><td>10,67 m</td><td>35'- 0"</td></tr></table>		6		width	4,72 m	15'- 6"	height	10,67 m	35'- 0"											
6																					
width	4,72 m	15'- 6"																			
height	10,67 m	35'- 0"																			
Scrim	<table border="1"><tr><td colspan="2">1</td></tr><tr><td>white</td><td>width</td><td>21,34 m</td><td>70'- 0"</td></tr><tr><td>height</td><td>10,21 m</td><td>33'- 6"</td></tr><tr><td>black</td><td colspan="2">1</td></tr><tr><td>width</td><td>21,34 m</td><td>70'- 0"</td></tr><tr><td>height</td><td>10,67 m</td><td>35'- 0"</td></tr></table>		1		white	width	21,34 m	70'- 0"	height	10,21 m	33'- 6"	black	1		width	21,34 m	70'- 0"	height	10,67 m	35'- 0"	
1																					
white	width	21,34 m	70'- 0"																		
height	10,21 m	33'- 6"																			
black	1																				
width	21,34 m	70'- 0"																			
height	10,67 m	35'- 0"																			
Cyclorama plastic, cream colored	<table border="1"><tr><td colspan="2">1</td></tr><tr><td>width</td><td>21,34 m</td><td>70'- 0"</td></tr><tr><td>height</td><td>12,19 m</td><td>40'- 0"</td></tr></table>		1		width	21,34 m	70'- 0"	height	12,19 m	40'- 0"											
1																					
width	21,34 m	70'- 0"																			
height	12,19 m	40'- 0"																			

Stage manager's desk

Desk located S.R. only, includes paging microphone, video monitor and intercom station (4 channels)

Orchestra equipment

	60	<table border="1"><tr><td>music stands</td></tr></table>	music stands
music stands			
	80	<table border="1"><tr><td>stands lights</td></tr></table>	stands lights
stands lights			
stage	1	<table border="1"><tr><td>Conductor's podium</td></tr></table>	Conductor's podium
Conductor's podium			
pit	1		
musician's chair		<table border="1"><tr><td>85</td></tr></table>	85
85			
stool	10	<table border="1"><tr><td>black wood 30"</td></tr></table>	black wood 30"
black wood 30"			
utility chair	50	<table border="1"><tr><td>Aluminium black</td></tr></table>	Aluminium black
Aluminium black			

Pianos (piano tuning charges will apply)

1	<table border="1"><tr><td>Steinway 9'</td><td>D - New York</td></tr></table>	Steinway 9'	D - New York	440 Hz
Steinway 9'	D - New York			
1	<table border="1"><tr><td>Steinway 7'</td><td>B - New York</td></tr></table>	Steinway 7'	B - New York	440 Hz
Steinway 7'	B - New York			

THÉÂTRE MAISONNEUVE

Risers

plateform	32	1,22 x 2,44 m	4' x 8'
	8	1,22 x 1,22 m	4' x 4'
leg	64	203 mm	8"
	64	406 mm	16"
	112	610 mm	24"
riser's straircase	3	3 steps	
	3	2 steps	
riser's wheel		44	
dress kit	6	203 x 4876 mm	8" x 16'
	7	406 x 4876 mm	16" x 16'
	7	610 x 4876 mm	24" x 16'

Ground support systems

4	bases+pin	24" x 24" - 3 holes	on a dolly
4	adjustables 7'-12'	horizontal	
4	adjustable 6'-10'	vertical	
3	black curtain	8' x 8'	

Tables

4	lenght	4'
4		6'
12		8'

Lifts

(battery, ac)	1	Genie	AWP-36S
(ac)	1	Up-Right	UL33

Step ladders

height :	2	Louisville-Werner	6'
	2		8'
	3		10'
	2		12'

Dance floor

Harlequin Cascade	10	49' x 6'-7"	rolls
-------------------	----	-------------	-------

Black drum carpet

2	4' x 8'	Carpet
2	8' x 8'	

Lighting
Touring companies (120 / 208 volts)

located stage left	1	400 A - cam-lock
* connection possibility when available	1	400 A - cam-lock
upstage stage left	1	100 A - cam-lock

Follows spots

follow spot	2	Robert Juliat	Aramis HMI	2.5 kw
-------------	---	---------------	------------	--------

Stage lighting control

console located behind the first balcony.	1	Strand	Light Palette VL
console located stage right	1	Strand	Light Palette VL
1 dimmer = 1 circuit			
dimmers	618	Strand	C-21 / 2.4 Kw
dimmers	24	Strand	C-21 / 6 Kw
Electronic soft patch			

Fixed equipment

Catwalk (FOH)		ETC - Source Four		
F.O.H	6	# 0	19°	575 w
	24	# 1st	zoom 15° x 30°	750 w
	24	# 2nd		750 w
Torm doors	24	ETC - S4	26°	575 w
	24		19°	575 w
Scoop bar	8	Iris 4		1 Kw
worklights	26	LED	white	non-dimmable

Mobile Equipment

bodies	144	ETC	Source four	575 w
lenses available:	36		19°	
	64		26°	
	60		36°	
	18		50°	
Strand projectors				
	64	zoom SL	15° x 32°	575 w
	24		23° x 50°	575 w
	40	fresnel 8"	8° x 62°	2 Kw
	10	fresnel 6"	15° x 59°	1 Kw
Altman projectors	84	Par 64		1 Kw
Bulbs available:		Wide - Medium - Narrow - Very Narrow		
	40	Par ACL (simple)		
ground row (4 x circuits)	14	Aurora 4'-4" - (1320 mm)		1 Kw

Lighting accessories

Gobo holder	40	ETC	type A
	40		type B
	40		Strand
Iris	24	ETC	
	24	Strand	
floor base	24	simple	
lighting ladders	12	30" x 5'	
lighting boom	12	2' - 4' - 6' - 8' - 10' - 12'	
Colorolor filters		Roscolux	

Sound

Clause 9.2 of the contract: The Théâtre Maisonneuve is located above the théâtre Jean-Duceppe. The TENANT agrees to comply to the satisfaction of the SOCIETY the volume of his license at Théâtre Maisonneuve to a maximum of **ninety-six (96) dBc**.

Touring companies (120 / 208 volts)

located stage left	100 A - cam-lock
--------------------	------------------

Mixing console

Audio mixing position	Center, last rows(Q,R,S) at Parterre level	
usable width x depth	92" x 102"	2,34m x 2,59m
mixing digital audio board 56 IN / 56 OUT (48 Analog + 8 AES/EBU)	1	DIGICO (CORE v2) SD-10 optiCore SD-RACK
Available from September to may : 40 In / 16 OUT	1	DIGICO (CORE v2) SD-9 D-Rack
50 balanced lines (mobile on stage)	1	multi-patch
16 balanced lines (stage left)	1	patch box

House speaker system

Center sub-bass speaker (fixed)	2	Meyer Sound	600-HP
Floor sub-bass speaker L + R (fixed)	2	Meyer Sound	900-LFC
Top speaker L + R (fixed)	28	Meyer Sound	MINA
Floor speaker L + R (fixed)	2+2	Meyer Sound	UPQ-1P / UPQ-2P
Front fill speaker	6	Meyer Sound	UP-4XP
Corbeille delay speaker (fixed)	2	EAW	JF-80
Balcon delay speaker (fixed)	4	Meyer Sound	UPJ-1P
main system processor (fixed)	2	Meyer Sound	Galileo 616

Stage monitor system

8 monitors mix including:			
passive speaker	8	L'acoustics	X12
amplifier	2	L'acoustics	LA4X
speaker for side fill	2	Meyer Sound	MSL-4 P

with tripod, short U-bracket X-US1215 and EMBi

Playback

CD player	1	SONY	CDP-D11
Egalizer	1	Klark teknik	DN-360

Microphones

3	Shure	MX393	Switch on/off	
7		SM-57		
7		SM-58		
4		SM-58S		
1		SM-81		
2		SM-87		
1		SM-91		
2		Beta-98		
1		Beta 52		
4	Neumann	KM-184	with percussion clip	
1		TLM-193		
6	Sennheiser	E604		
4		MD-421		
4		MD-441		
3		MKH-40		
2	AKG	MKH-60		with shockmount clip with shockmount clip with shockmount clip
2		C-414 ULS		
2		C-414B		
1		C-451		
2	Crown	PZM 30RB		
4		PCC 160		
4	Countryman Goose neck 18"			
3	Klark teknik	LBB100 active		
6		DN-100		
3	Radial	Pro DI (passive)		
14	long with boom			
4	small with boom			
4	long with boom			
4	small with boom			
4	with small boom			
4	table stand			
5				

Communications (digital)

fixed stations located in the theater	CLEAR COM	HelixNet	1 stage manager desk, 1 lighting booth, 1 audio rack
Beltpack	CLEAR-COM	HBP-2X	
Permanent beltpack	CLEAR-COM	HBP-2X	1 SR Follow spot, 1 SL Follow spot, 1 loading gallery
desktop station with speaker	CLEAR-COM	HKB-2X	
Permanent desktop station with speaker	CLEAR-COM	HKB-2X	1 Lighting console, 1 Remote console, 1 Prod room, 1 Pin-rail 4 2Wire channels and 4 4Wire channels
Guest inputs	A, B, C, D		

Wireless intercom system (digital)

wireless intercom system (Transmit)	1	CLEARCOM	FreeSpeak II base 2
belt pack (Receiver)	8		2,4 Ghz

Hearing-impaired system

DECADE	89,9 FM
--------	---------

Projection vidéo

Platform for video projector (Corbeille edge) offset center 36"	2	300 lbs - 135 Kg CMU	30" depth x 36" Large
--	---	----------------------	-----------------------



Digital movie / Cinema

Cinema equipment is available for the exclusive use of digital projections on the cinema screen only. **No adjustment or modification are permitted** on the projector and its lens. A specialized projection technician is required for the commissioning and operation of projection equipment.

Digital projector

digital projector	1	CHRISTIE	Solara 2230	Fixed
high brightness - lense	1		1,81 - 3,0:1	Fixed
Video server	1	DOLBY	IMS2000	Fixed
Audio processor	1		CP750	Fixed
cinema scaler	1	Kramer	VP-734	Fixed

Projection screen

height	6,25 m	20'- 6"
width	12,80 m	41'-11"

Installed with motorized winch on line set # 18

Audio surround system

sub-bass speaker*	2	Meyer	650P	* parts of the existing P.A. house system
L/C/R	3		CQ-1P	
surround	16	OUTLINE	MOVIE FX 101	
Processing	2	XILICA XP 8080		

THÉÂTRE MAISONNEUVE

Le dossier technique de la salle, dans lequel sont énumérés les équipements techniques de scène, de son et d'éclairage, ne constitue pas un document contractuel. Veuillez communiquer avec le département technique pour connaître les mises à jour du présent devis.

The technical documentation of the venue that include stage, sound or lighting is not list as a contract. Contact the technical department for an update on this document.

ACCROCHAGE STANDARD DU THÉÂTRE / HOUSE HANG

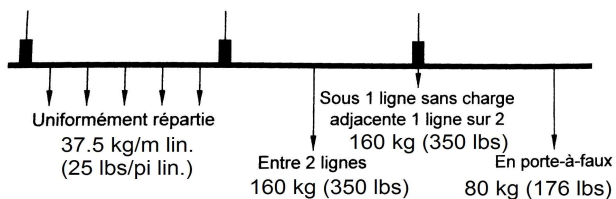
mètres meters	pieds feet	équipe set number	description	description	grandeur mètres / meters	grandeur pieds / feet	date
6,25	20'-6"	avant-scène	porteuse motorisée (544kg / 1200 lbs)	motorized pipe	14,73	48'0"	
3,20	10'-6"	avant-scène	porteuse motorisée (544kg / 1200 lbs)	motorized pipe	14,73	48'0"	
Vers la salle		↑	3 x Service DEL (Fixe)	3 x LED worklights (Fixed)			
0,00	0'-0"						
Vers la scène		↓					
0,15	0'-6"		rideau d'amiante (permanent)	asbestos curtain (permanent)			
0,58	1'-11"	01	rideau-maison (permanent)	main house curtain (permanent)			
0,86	2'-10"	1	fond noir # 1	black backing # 1	21,34 x 10,67	70' x 35'	2011
1,01	3'-4"	2	pendrillons # 1	legs # 1	4,72 x 10,67	15'-6" x 35'	2011
1,16	3'-10"	3					
1,32	4'-4"	4					
1,49	4'-11"	5					
1,67	5'-6"	6					
1,87	6'-2½"	7					
2,08	6'-10"	8	6 x Service DEL (Fixe)	6 x LED worklights (Fixed)			
2,26	7'-5"	9					
2,44	8'-0"	10					
2,59	8'-6"	11					
2,72	8'-11"	12	frise # 1	border # 1	21,34 x 4,72	70' x 15'-6"	2011
2,97	9'-9"	13	pendrillons # 2	legs # 2	4,72 x 10,67	15'-6" x 35'	2011
3,15	10'-4"	14					
3,33	10'-11"	15					
3,51	11'-6"	16					
3,68	12'-1"	17	frise # 2	border # 2	21,34 x 4,72	70' x 15'-6"	2011
3,86	12'-8"	--	écran de cinéma (permanent)	movie screen (permanent)			
4,03	13'-3"	19					
4,22	13'-10"	20					
4,39	14'-5"	21					
4,57	15'-0"	22	frise # 3	border # 3	21,34 x 4,72	70' x 15'-6"	2011
4,75	15'-7"	23	pendrillons # 3	legs # 3	4,72 x 10,67	15'-6" x 35'	2011
4,93	16'-2"	24	6 x Service DEL (Fixe)	6 x LED worklights (Fixed)			
5,11	16'-9"	25					
5,28	17'-4"	26					
5,51	18'-1"	27					
5,74	18'-10"	28					
5,89	19'-4"	29					
6,07	19'-11"	30					
6,25	20'-6"	31					
6,43	21'-1"	32					
6,60	21'-8"	33					
6,78	22'-3"	34	fond noir # 2	black backing # 2	21,34 x 10,67	70' x 35'	2011
6,96	22'-10"	35	pendrillons # 4	legs # 4	4,72 x 10,67	15'-6" x 35'	2011
7,11	23'-4"	36					
7,32	24'-0"	37					
7,49	24'-7"	38					
7,67	25'-2"	39	6 x Service DEL (Fixe)	6 x LED worklights (Fixed)			
7,85	25'-9"	40					
8,03	26'-4"	41					
8,23	27'-0"	42					
8,46	27'-9"	43					

ACCROCHAGE STANDARD DU THÉÂTRE / HOUSE HANG

mètres meters	pieds feet	équipe set number	description	description	grandeur mètres / meters	grandeur pieds / feet	date
8,66	28'-5"	44					
8,84	29'-0"	45					
9,02	29'-7"	46	frise # 4	border # 4	21,34 x 4,72	70' x 15'-6'	2011
9,19	30'-2"	47	pendrillons # 5	legs # 5	4,72 x 10,67	15'-6" x 35'	
9,37	30'-9"	48					
9,55	31'-4"	49					
9,73	31'-11"	50	fond noir # 3	black backing # 3	21,34 x 10,67	70' x 35'	2011
9,91	32'-6"	51	rideau sur patience (permanent)	black traveller (permanent)	(2) 10,67 x 10,67	(2) 35' x 35'	2011
10,08	33'-1"	52					
10,26	33'-8"	53					
10,44	34'-3"	54					
10,62	34'-10"	55					
10,79	35'-5"	56					
11,02	36'-2"	57	frise # 5	border # 5	21,34 x 4,72	70' x 15'-6"	2011
11,25	36'-11"	58	pendrillons # 6	legs # 6	4,72 x 10,67	15'-6" x 35'	2011
11,40	37'-5"	59					
11,58	38'-0"	60	herse d'éclairage du cyc 4 couleurs	cyclorama light bar 4 colours		Fixe	
11,76	38'-7"	61					
11,96	39'-3"	62					
12,12	39'-9"	63					
12,27	40'-5"	64					
12,47	40'-11"	65					
12,65	41'-6"	66					
12,83	42'-1"	67					
13,00	42'-8"	68	pendrillons # 7	legs # 7	4,72 x 10,67	15'-6" x 35'	2011
13,18	43'-3"	69	fond noir # 4	black backing # 4	21,34 x 10,67	70' x 35'	
13,36	43'-10"	70					
13,54	44'-5"	71	cyclorama p.v.c.	cyclorama p.v.c.	21,34 x 12,19	70' x 40'	
13,69	44'-11"	72	fond noir # 5	black backing # 5	21,34 x 10,67	70' x 35'	2011

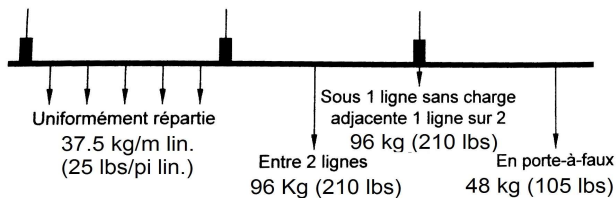
** Ouverture des pendrillons / standard opening = 44'

Perches à contre-poids - Counterweight pipes load (1 à 72 sauf 18) :



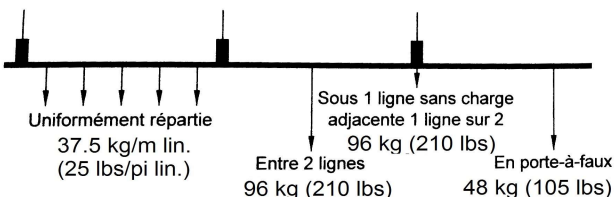
Longueur porteuse
22,9m (75'-3")
Charge maximale
517 kg (1140 lbs)

Perches motorisées d'avant-scène - FOH motorized pipes load (F1 & F2) :

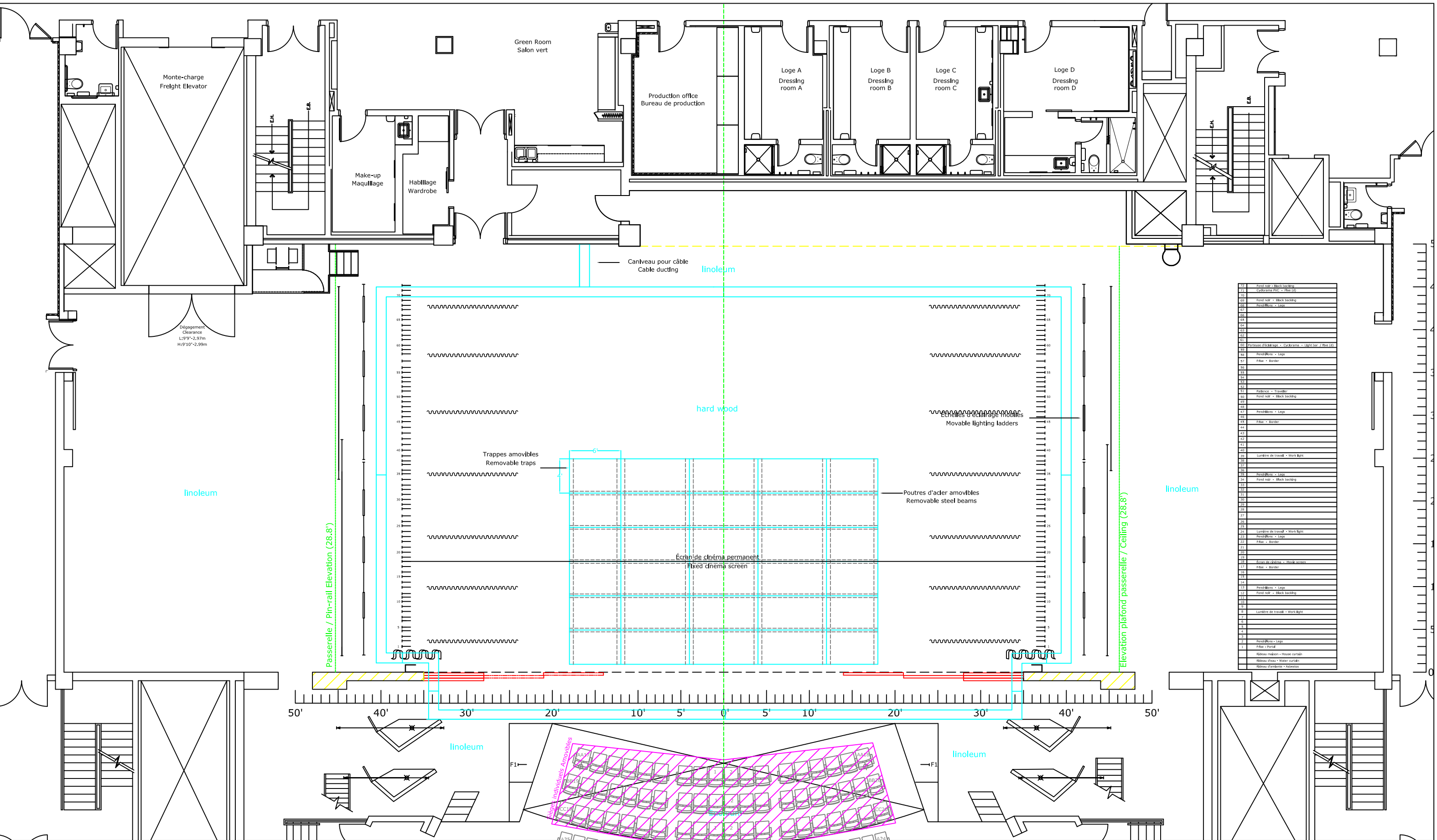


Longueur porteuse
14,6 m (48')
Charge maximale
544 kg (1200 lbs)

Perches motorisées allemandes - German motorized pipes load (C3-AS & LT, J3-AS & LT) :



Longueur porteuse
7,3m (24')
Charge maximale
250 kg (550 lbs)



Salle / Location:

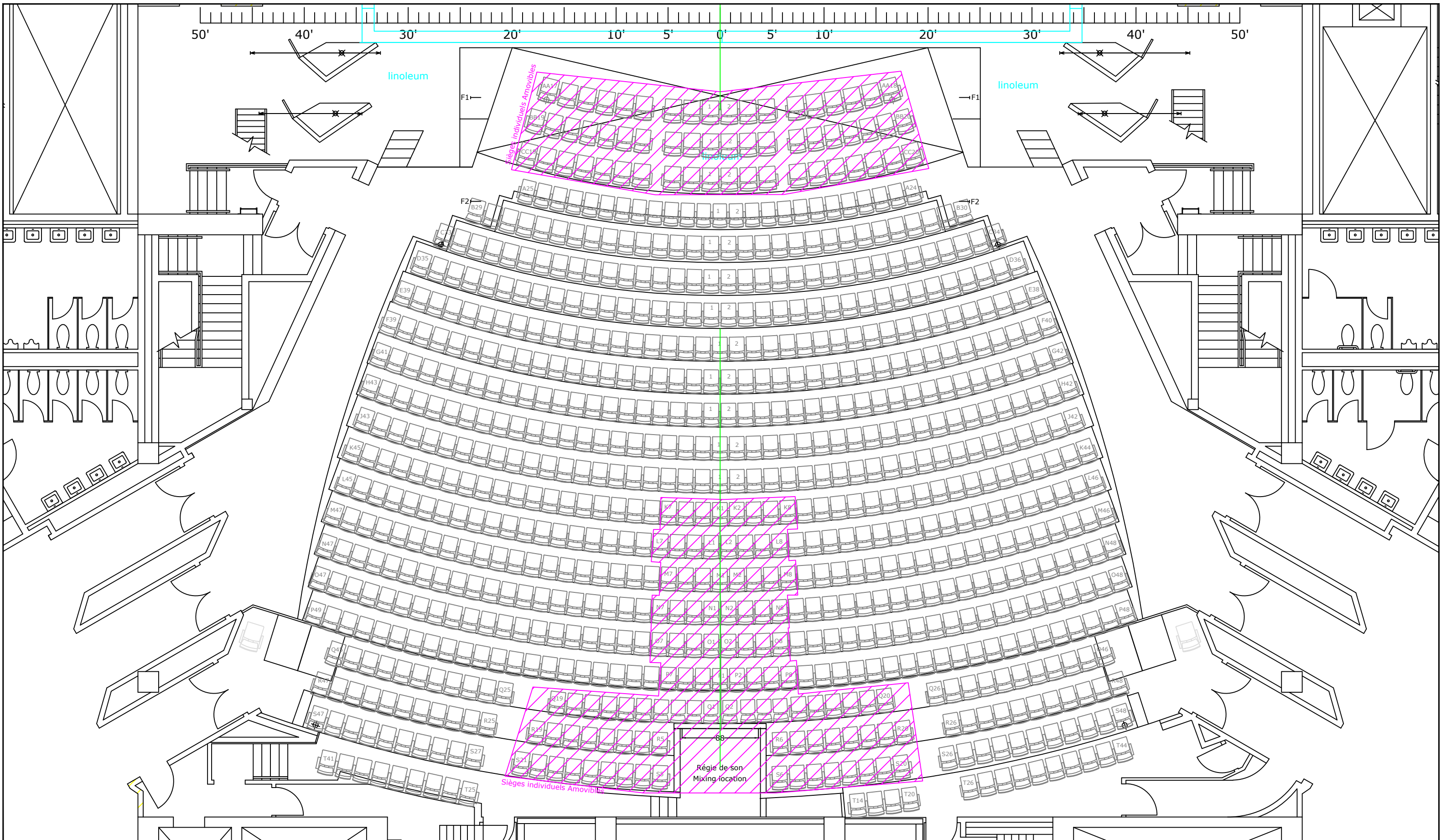
THÉÂTRE MAISONNEUVE

175, rue Sainte -Catherine ouest, Montréal (Qc) H2X 1Z8

Titre / Title:

VUE EN PLAN - SCÈNE
PLAN VIEW AT STAGE LEVEL

Dessin / Drawing: PDA-TM-1_AI	
Échelle / Scale: Voir règle - See ruler	Date: Sept / September '16
Format: Architecturale / Impérial 11"x 17"	



Salle / Location:

THÉÂTRE MAISONNEUVE

175, rue Sainte-Catherine ouest, Montréal (Qc) H2X 1Z8

Titre / Title:

VUE EN PLAN - SIÈGES
PLAN VIEW AT STAGE LEVEL - SEATS

Dessin / Drawing:

PDA-TM-1_AI

Échelle / Scale:

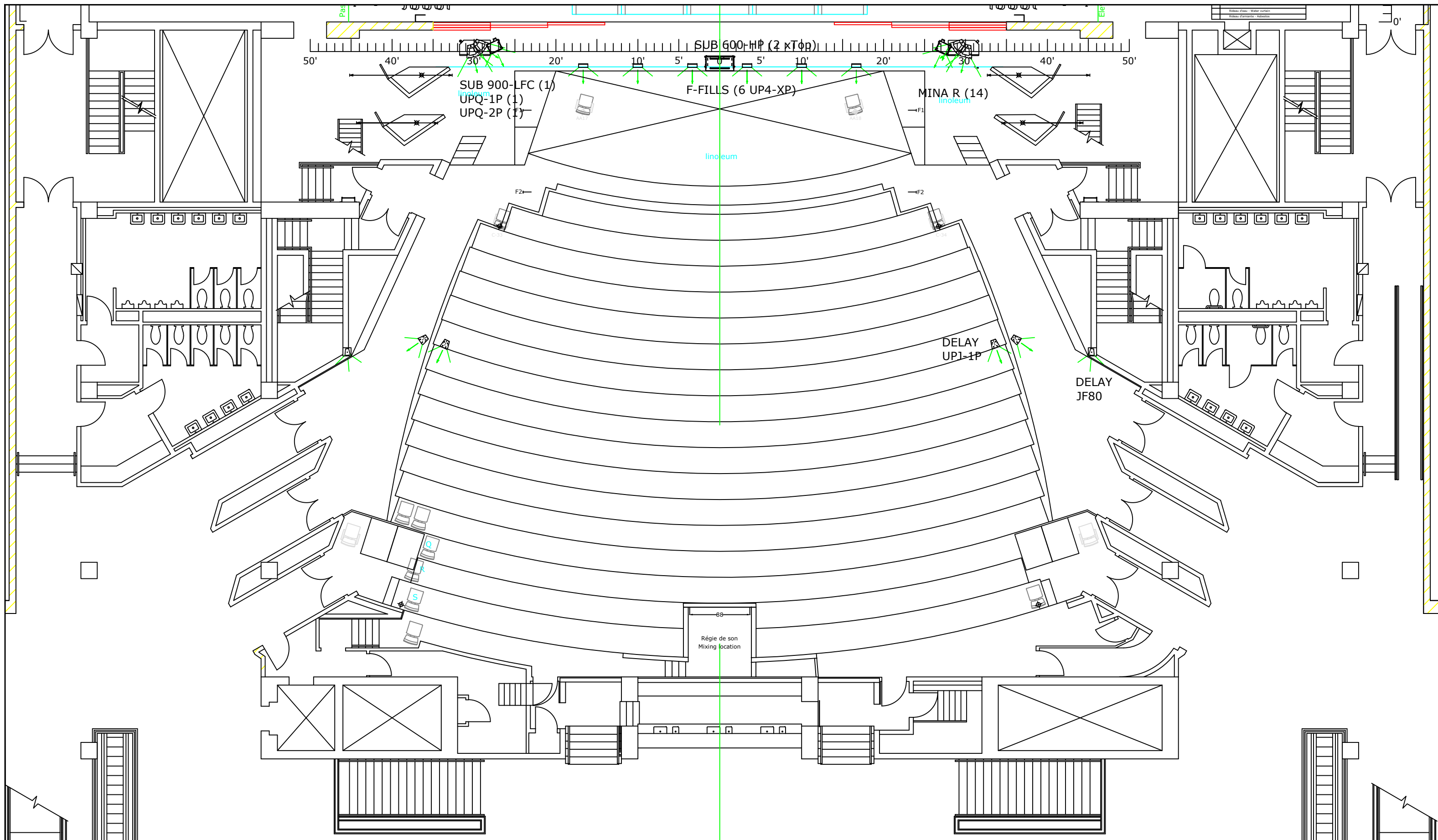
Voir règle - See ruler

Date:

March/Mars '16

Format:

Architecturale / Impérial
11"x 17"



**Place
des
Arts**

Salle / Location:

THÉÂTRE MAISONNEUVE
175, rue Sainte-Catherine ouest, Montréal (Qc) H2X 1Z8

Titre / Title:

VUE EN PLAN - AUDIO
PLAN VIEW AT STAGE LEVEL - AUDIO

Dessin / Drawing:
PDA-TM-1_AI

Échelle / Scale:
Voir règle - See ruler

Date:
Sept / Septembre '19

Format:
Architecturale / Impérial
11"x 17"



**Place
des
Arts**

Salle / Location:

THÉÂTRE MAISONNEUVE
175, rue Sainte -Catherine ouest, Montréal (Qc) H2X 1Z8

Titre /Title:

**COUPE LONGITUDINALE
SECTION VIEW**

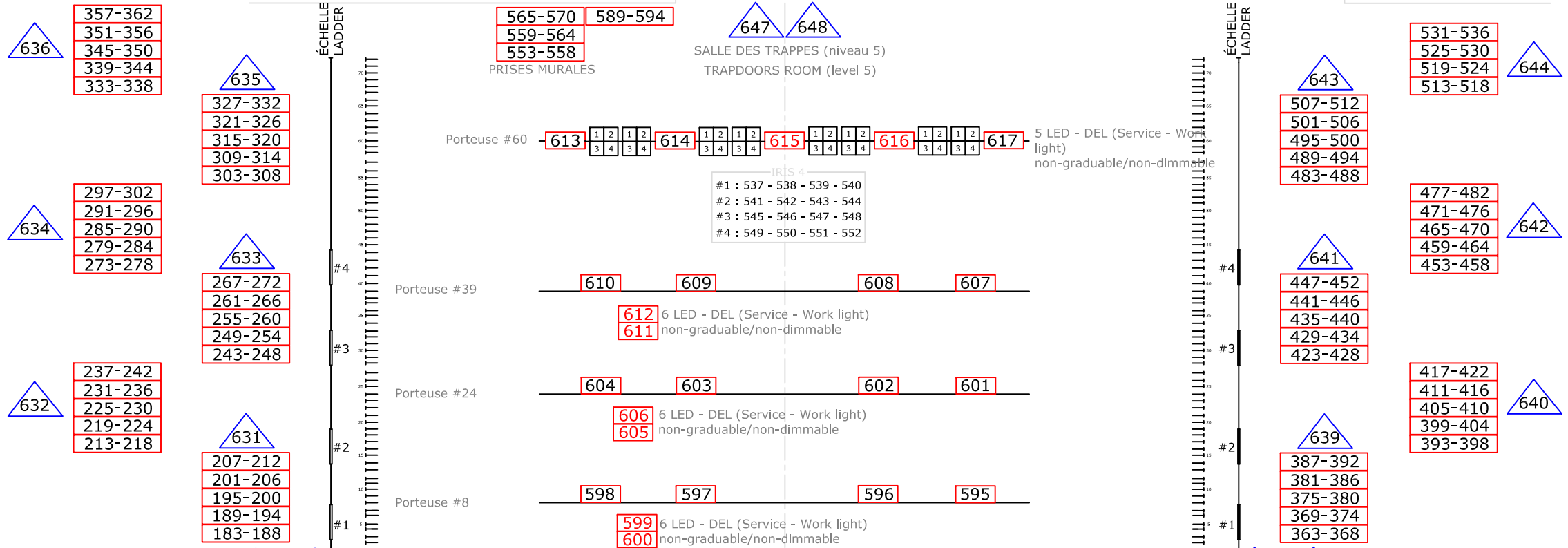
DessIn /Drawing:
PDA-TM-2_AI

Échelle / Scale: Voir règle - See ruler
Date: Janv / January '21

Format:
Architecturale / Impérial
11"x 17"

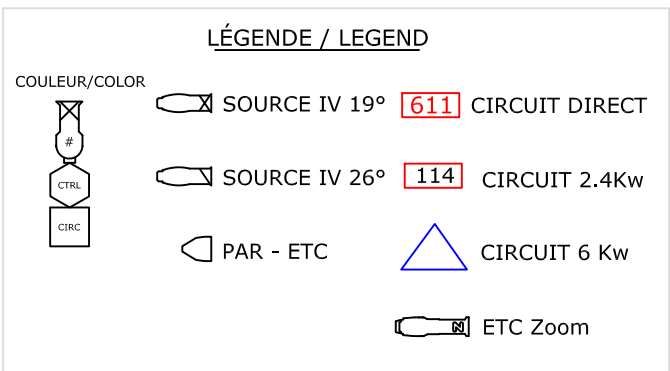
36' 33' 30' 27' 24' 21' 18' 15' 12' 9' 6' 3' 0' 3' 6' 9' 12' 15' 18' 21' 24' 27' 30' 33' 36'

PRISES MURALES
 583-588
 577-582
 571-576



PRISES 4
 #1 : 537 - 538 - 539 - 540
 #2 : 541 - 542 - 543 - 544
 #3 : 545 - 546 - 547 - 548
 #4 : 549 - 550 - 551 - 552

DIVERS
 618 Table de régie - Stage manager's table
 086 Lumière centre salle - Center light house
 (Niveau corbeille - First balcony)
 1001 à 1015 Lumière de salle - House light
 1016 Régie son Parterre - Parterre Sound Booth
 1017 à 1019 Portes Sorties - Exit doors



THÉÂTRE MAISONNEUVE
 Circuiteries d'éclairage

Salle / Location:

THÉÂTRE MAISONNEUVE
 175, rue Sainte -Catherine ouest, Montréal (Qc) H2X 1Z8

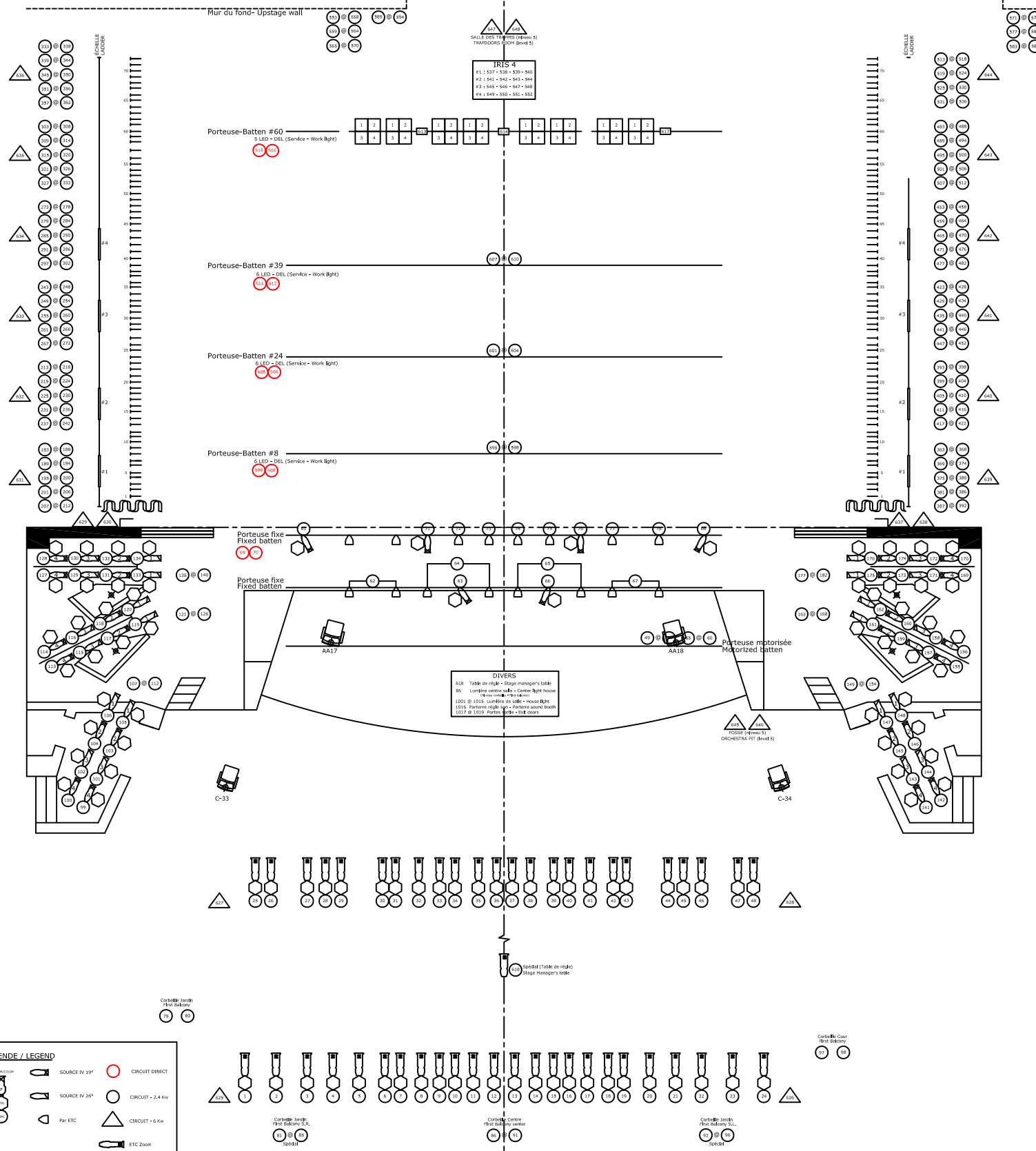
Titre /Title:

Plan des circuits d'éclairage
 Lighting plot of circuiteries

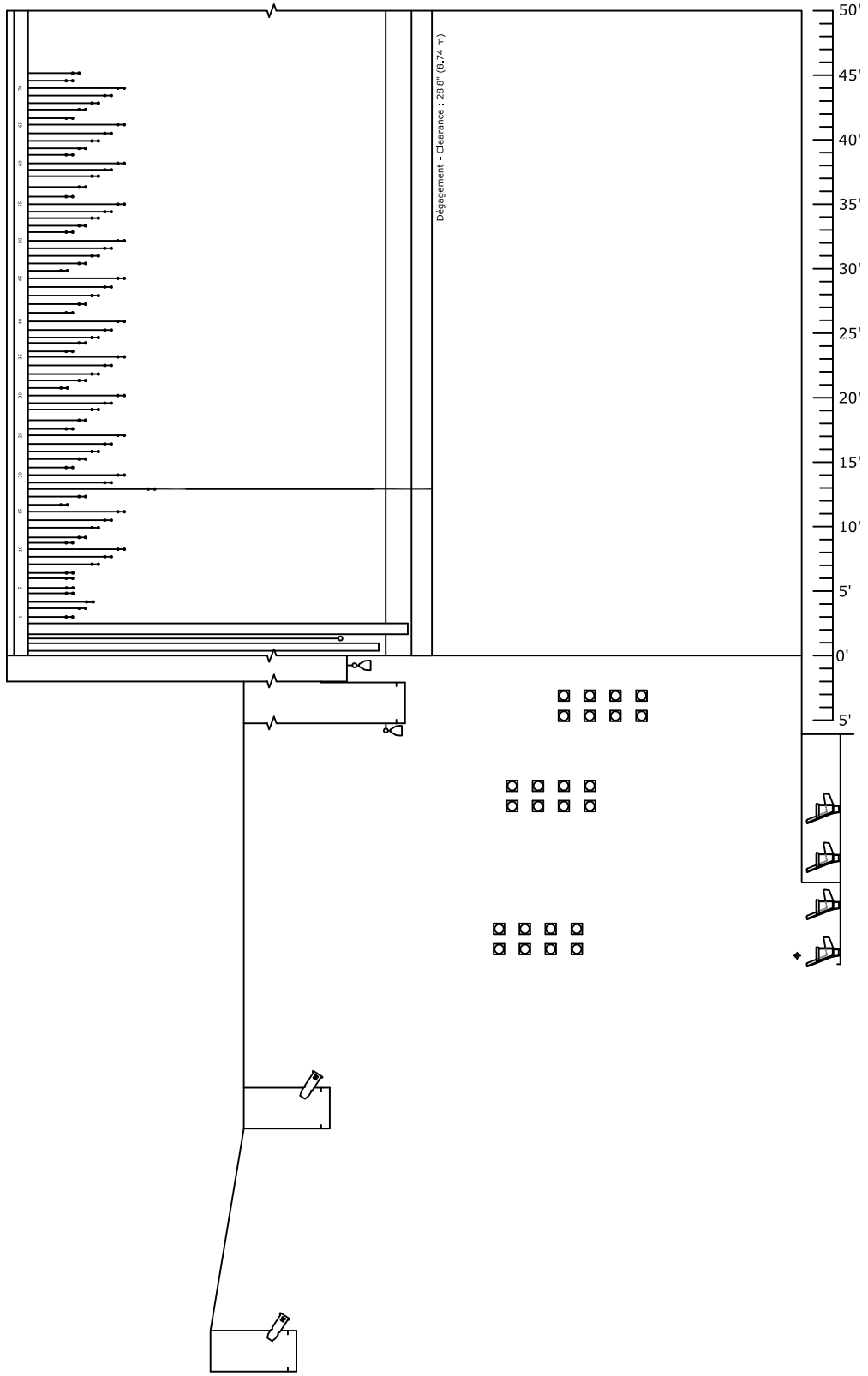
Dessin /Drawing:
 PDA-TM-4_AI
 Échelle / Scale:
 Voir règle - See ruler
 Date:
 May / Mai 2024
 Format:
 Architecturale / Impérial
 11"x 17"



36' 33' 30' 27' 24' 21' 18' 15' 12' 9' 6' 3' 0 3' 6' 9' 12' 15' 18' 21' 24' 27' 30' 33' 36'



87	Pointe de scène - Back stage
88	Pointe de scène - Back stage
89	Pointe de scène - Back stage
90	Pointe de scène - Back stage
91	Pointe de scène - Back stage
92	Pointe de scène - Back stage
93	Pointe de scène - Back stage
94	Pointe de scène - Back stage
95	Pointe de scène - Back stage
96	Pointe de scène - Back stage
97	Pointe de scène - Back stage
98	Pointe de scène - Back stage
99	Pointe de scène - Back stage
100	Pointe de scène - Back stage
101	Pointe de scène - Back stage
102	Pointe de scène - Back stage
103	Pointe de scène - Back stage
104	Pointe de scène - Back stage
105	Pointe de scène - Back stage
106	Pointe de scène - Back stage
107	Pointe de scène - Back stage
108	Pointe de scène - Back stage
109	Pointe de scène - Back stage
110	Pointe de scène - Back stage
111	Pointe de scène - Back stage
112	Pointe de scène - Back stage
113	Pointe de scène - Back stage
114	Pointe de scène - Back stage
115	Pointe de scène - Back stage
116	Pointe de scène - Back stage
117	Pointe de scène - Back stage
118	Pointe de scène - Back stage
119	Pointe de scène - Back stage
120	Pointe de scène - Back stage
121	Pointe de scène - Back stage
122	Pointe de scène - Back stage
123	Pointe de scène - Back stage
124	Pointe de scène - Back stage
125	Pointe de scène - Back stage
126	Pointe de scène - Back stage
127	Pointe de scène - Back stage
128	Pointe de scène - Back stage
129	Pointe de scène - Back stage
130	Pointe de scène - Back stage
131	Pointe de scène - Back stage
132	Pointe de scène - Back stage
133	Pointe de scène - Back stage
134	Pointe de scène - Back stage
135	Pointe de scène - Back stage
136	Pointe de scène - Back stage
137	Pointe de scène - Back stage
138	Pointe de scène - Back stage
139	Pointe de scène - Back stage
140	Pointe de scène - Back stage
141	Pointe de scène - Back stage
142	Pointe de scène - Back stage
143	Pointe de scène - Back stage
144	Pointe de scène - Back stage
145	Pointe de scène - Back stage
146	Pointe de scène - Back stage
147	Pointe de scène - Back stage
148	Pointe de scène - Back stage
149	Pointe de scène - Back stage
150	Pointe de scène - Back stage
151	Pointe de scène - Back stage
152	Pointe de scène - Back stage
153	Pointe de scène - Back stage
154	Pointe de scène - Back stage
155	Pointe de scène - Back stage
156	Pointe de scène - Back stage
157	Pointe de scène - Back stage
158	Pointe de scène - Back stage
159	Pointe de scène - Back stage
160	Pointe de scène - Back stage
161	Pointe de scène - Back stage
162	Pointe de scène - Back stage
163	Pointe de scène - Back stage
164	Pointe de scène - Back stage
165	Pointe de scène - Back stage
166	Pointe de scène - Back stage
167	Pointe de scène - Back stage
168	Pointe de scène - Back stage
169	Pointe de scène - Back stage
170	Pointe de scène - Back stage
171	Pointe de scène - Back stage
172	Pointe de scène - Back stage
173	Pointe de scène - Back stage
174	Pointe de scène - Back stage
175	Pointe de scène - Back stage
176	Pointe de scène - Back stage
177	Pointe de scène - Back stage
178	Pointe de scène - Back stage
179	Pointe de scène - Back stage
180	Pointe de scène - Back stage
181	Pointe de scène - Back stage
182	Pointe de scène - Back stage
183	Pointe de scène - Back stage
184	Pointe de scène - Back stage
185	Pointe de scène - Back stage
186	Pointe de scène - Back stage
187	Pointe de scène - Back stage
188	Pointe de scène - Back stage
189	Pointe de scène - Back stage
190	Pointe de scène - Back stage
191	Pointe de scène - Back stage
192	Pointe de scène - Back stage
193	Pointe de scène - Back stage
194	Pointe de scène - Back stage
195	Pointe de scène - Back stage
196	Pointe de scène - Back stage
197	Pointe de scène - Back stage
198	Pointe de scène - Back stage
199	Pointe de scène - Back stage
200	Pointe de scène - Back stage



LÉGENDE / LEGEND

	SOURCE IV 20"		CIRCUIT DIRECT
	SOURCE IV 20"		CIRCUIT - 2.4 Kw
	Par ETC		CIRCUIT - 6 Kw
	ETC Zoom		ETC Zoom



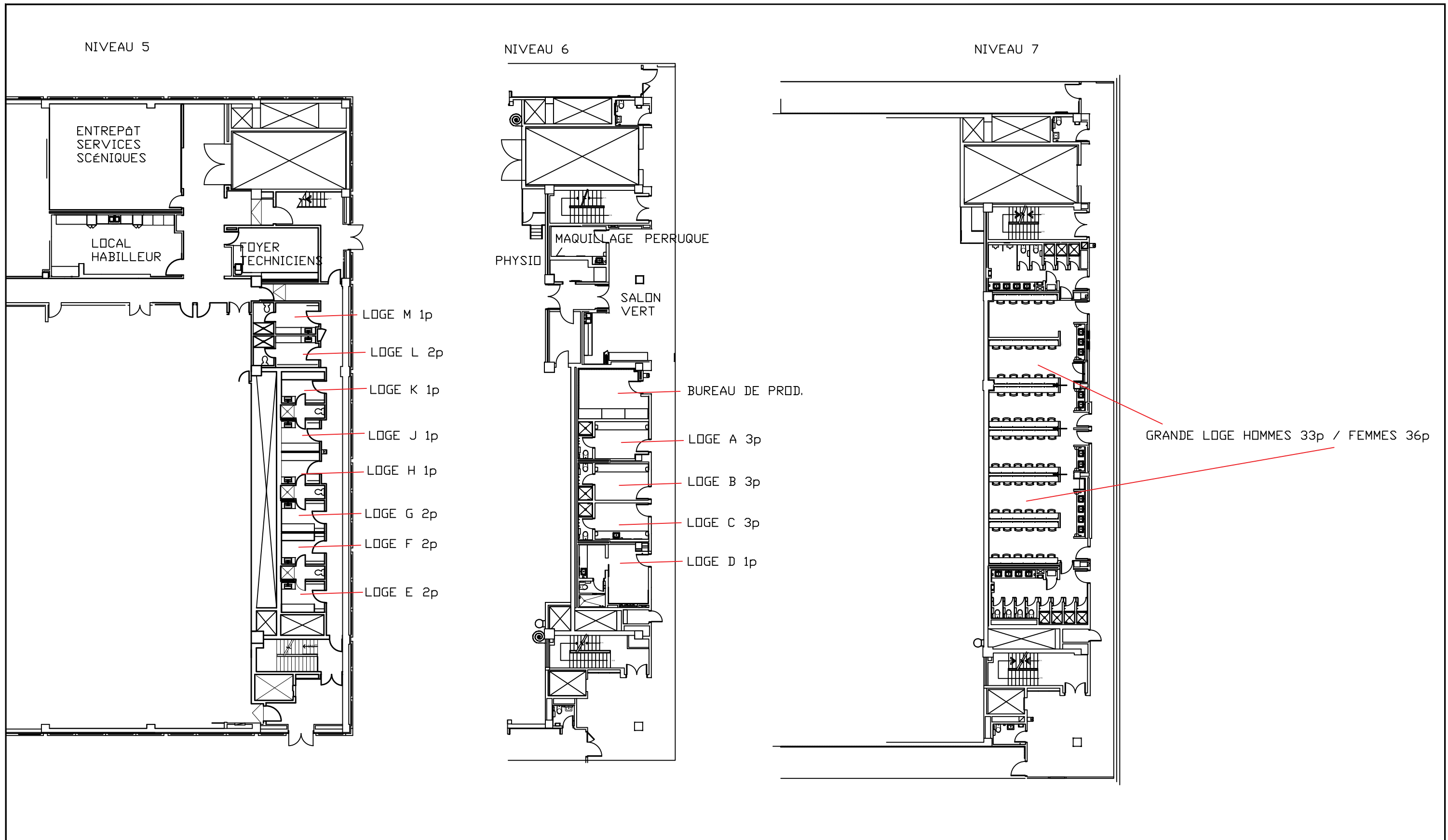
Salle / Location:

THÉÂTRE MAISONNEUVE
175, rue Sainte -Catherine ouest, Montréal (Qc) H2X 1Z8

Titre / Title:

ÉCLAIRAGE - LIGHTING
VUE EN PLAN/COUPE
PLAN/SECTION VIEW

Dessin / Drawing: PDA-TM-4_AI 2013	
Échelle / Scale: Voir règle - See ruler	Date: May/Mai 2024
Format: Architecturale / Impérial 11"x 17"	



Place
des
Arts

Salle / Location:

THÉÂTRE MAISONNEUVE
175, rue Sainte-Catherine ouest, Montréal (Qc) H2X 1Z8

Titre /Title:

Vue en Plan - LOGES
5, 6, 7 Étages (floor)

Echelle / Scale:

Date:

March / Mars 2019

Format:

Architecturale / Impérial

11'x 17'