

The technical documentation of the venue that includes stage, sound or lighting is not listed as a contract. Contact the technical department for an update on this document.

Informations Générales / General Informations

House

Elizabethan theater featuring fixed or detachable panels. Seating on three sides.

Seating	Normal	
seating capacity for booking	128	
house seats	6	
booking capacity	122	
House dimensions		
from house curtain to last row	3,96 m	13'-0"
from center line to S.R. wall	7,31 m	24'-0"
from center line to S. L. wall	7,77 m	25'-6"

Artists entrance

central security office

Quai de chargement - Loading dock

145 Ste.Catherine Street West (emergency exit)
(single glass door)

1444 St.Urbain Street
loading dock

Production office

backstage in the dressing room area	Tt 04078
telephone :	514-285-4381

Dressing rooms

dressing rooms sharing toilet and shower	2
main dressing room (4 mirrors and a sink) 1 person	Tt 04076
dressing room (3 mirrors and a sink) 1 person	Tt 04077

Salles de répétitions - Rehearsal rooms

available upon request

Stage

Stage description and dimensions

oak floor.		
stage height	0,33 m	13"
total width	5,49 m	18'-0"
total depth	3,96 m	13'-0"
maximum height	2,36 m	7'-9"
fixed column on stage		
front of column to front of stage	66 cm x 66 cm	26" x 26"
	2,74m	9'-0"

Rigging system

permanents pipes spread unevenly all over the theatre ceiling.	46
--	----

SALLE CLAUDE-LÉVEILLÉE

Stage masking

full back drops (with an opening)	1	
	width	7,31m 24'-0"
	height	2,36m 7'-9"

Orchestra equipment

music stand	5	
music stand light	5	
black chair	10	
black wood stool	5	
	3	24" high
	1	28" high
	1	30" high

Pianos (there are additional costs for the tuning)

stage	1	Yamaha	C5	Tuned at 440 Hz
-------	---	--------	----	-----------------

Step ladder (Louisville / Werner)

1	2.43 m	8'
---	--------	----

Drum carpet

1	1.83 x 1.83 m	6' x 6'
1	1.22 x 1.52 m	4' x 5'

Lighting

Stage lighting control

Console	1	ETC	Ion Xe 20 12k
located back of house S.L.	1	ETC	Fader wing 20
dimmers circuits on stage and in the house Directs circuits for LED par	78	Strand	CD 80 (2.4 Kw)
		78	2 Kw
			18

Lighting equipment

Permanent based lighting. It is not allowed to move fixtures or change dmx channels.

Zoom profile 25°-50°	12	Strand	2205	mode : 13 channels
Fresnel	1	Chauvet	Ovation F95 WW	
Fresnel	4	Altman	300L	
Par LED Zoom	12	Elation	FUZE Z120 IP	
Profile	2	Elation	WW Profile 26deg	
Gobo holder :	23	Strand		
Iris :	6	Strand		

Mobile lighting equipment

Fresnel	3	Chauvet	Ovation F95 WW
Fresnel	1	Altman	300L

SALLE CLAUDE-LÉVEILLÉE

Sound

Mixing console

Automated console 32 inputs x 16 outputs	1	Digico	SD9 (CORE v2)
located back of house S.L.	1	Digico	UB MADI

House speaker system

speaker top	4	OUTLINE	X123W
speaker sub	6	OUTLINE	EIDOS 108s
amplifier and processor	1	POWERSOFT	X8

Playback & Recorder

CD recorder	1	Tascam	SS-CDR1
CD player with remote control	2	Denon	DN-C635

Stage monitor system

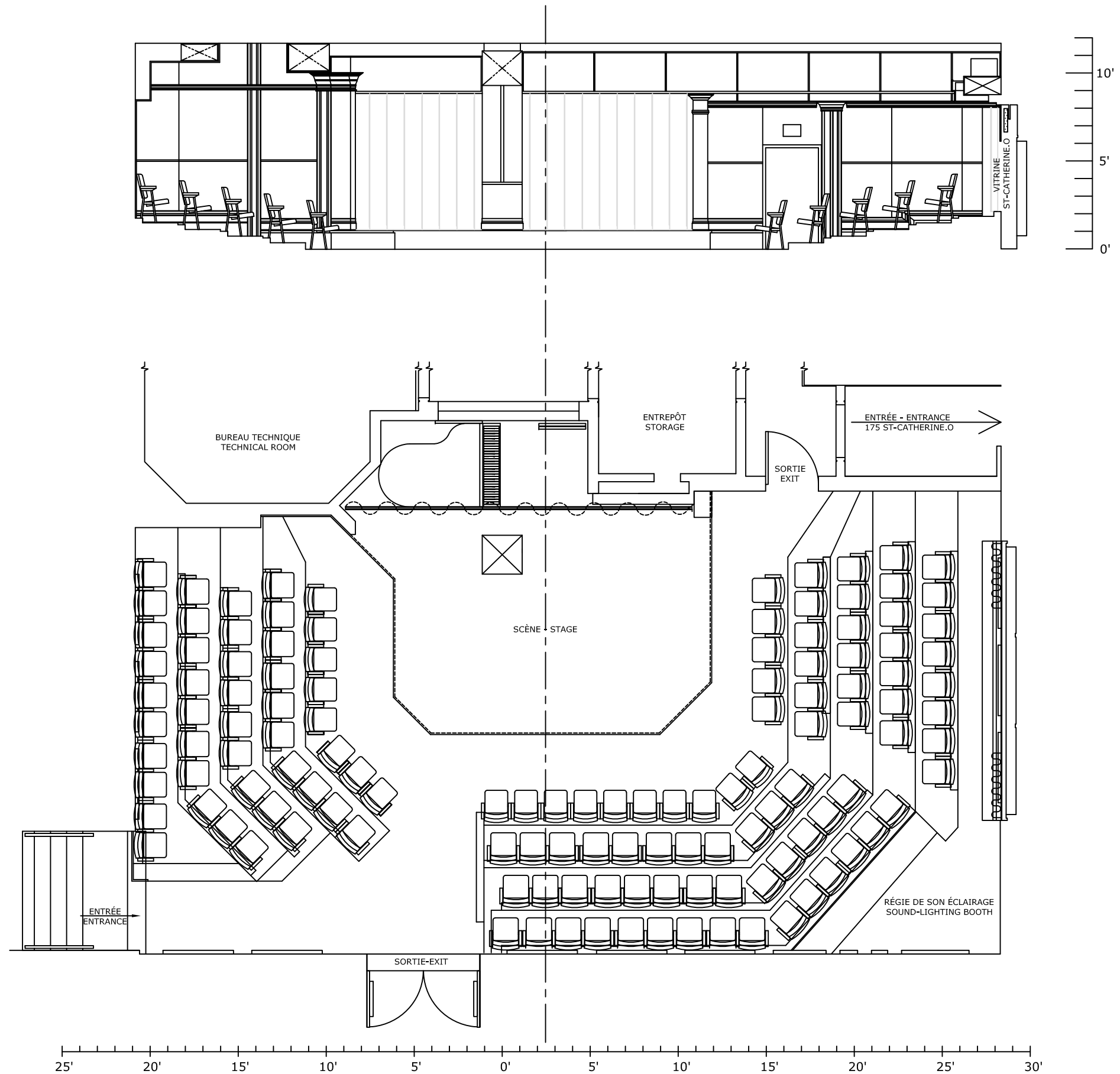
monitors mix including:		5	
passive speaker	2	EAW	SM-200
active speaker	6	OUTLINE	DVS-8SP
In ear complete system	4	Sennheiser	EW 300 IEM G3 B
amplifier	1	QSC	1500

Microphones

1	AKG	426	Stereo + preamp
1	AKG	C451 EB	
1	AKG	C535 EB	
2	Audio Technica	ATM-35	hypercardioïde (with clip)
2	Audio Technica	AT-4053a	hypercardioïde
2	DPA	4099	with 2 piano clips and 2 stand clips
1	Neumann	KSM 105	
2*	Neumann	KM-184	*Unavailable from June until Spetember
1	Sennheiser	MKH40	
3	Sennheiser	MD 421	
1	Shure	Beta 52	
1	Shure	Beta 58	
3	Shure	Beta 87C	
3	Shure	Beta 98	with clip
6	Shure	SM-57	
5	Shure	SM-58	
1	Shure	SM-81	
2	Shure	SM-91	
1	Shure	565 SD	with switch
2	Shure	ULXP4	SM-58 wireless microphone
3	BSS	AR-116	active DI
2	Radial	J48	active DI
3	Whirlwind	IMP-2	passive DI

Video

Recorder	1	DATAVIDEO	HDR70	Hard-drive 320 GB
HD video camera	1	MARSHALL	PTZ CV620	with remote control



**Place
des
Arts**

Salle / Location:

SALLE CLAUDE LÉVEILLÉE
175 rue Sainte-Catherine ouest, Montréal (Qc) H2X 1Y9

Titre /Title:

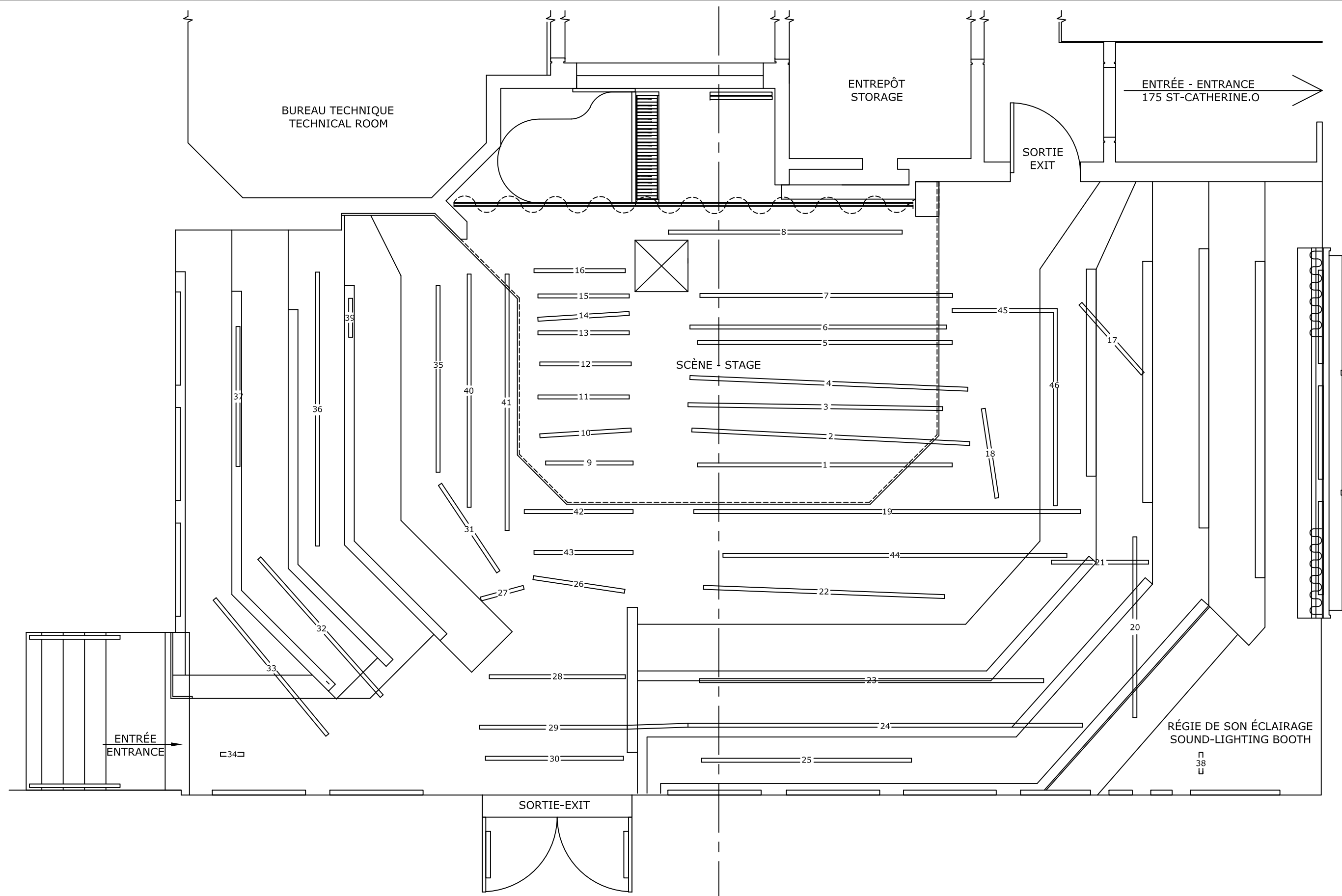
VUE EN PLAN ET COUPE
PLAN-SECTION VIEWS

Dessin /Drawing:
PDA_SCL-AI

Échelle / Scale:
Voir règle-See ruler

Date:
Mars / March 2023

Format:
Architecturale / Impérial
11"x 17"



**Place
des
Arts**

Salle / Location:

SALLE CLAUDE LÉVEILLÉE
175 rue Sainte-Catherine ouest, Montréal (Qc) H2X 1Y9

Titre / Title:

**VUE EN PLAN
PLAN VIEW**

Dessin / Drawing:

PDA_SCL-AI

Échelle / Scale:

Voir règle-See ruler

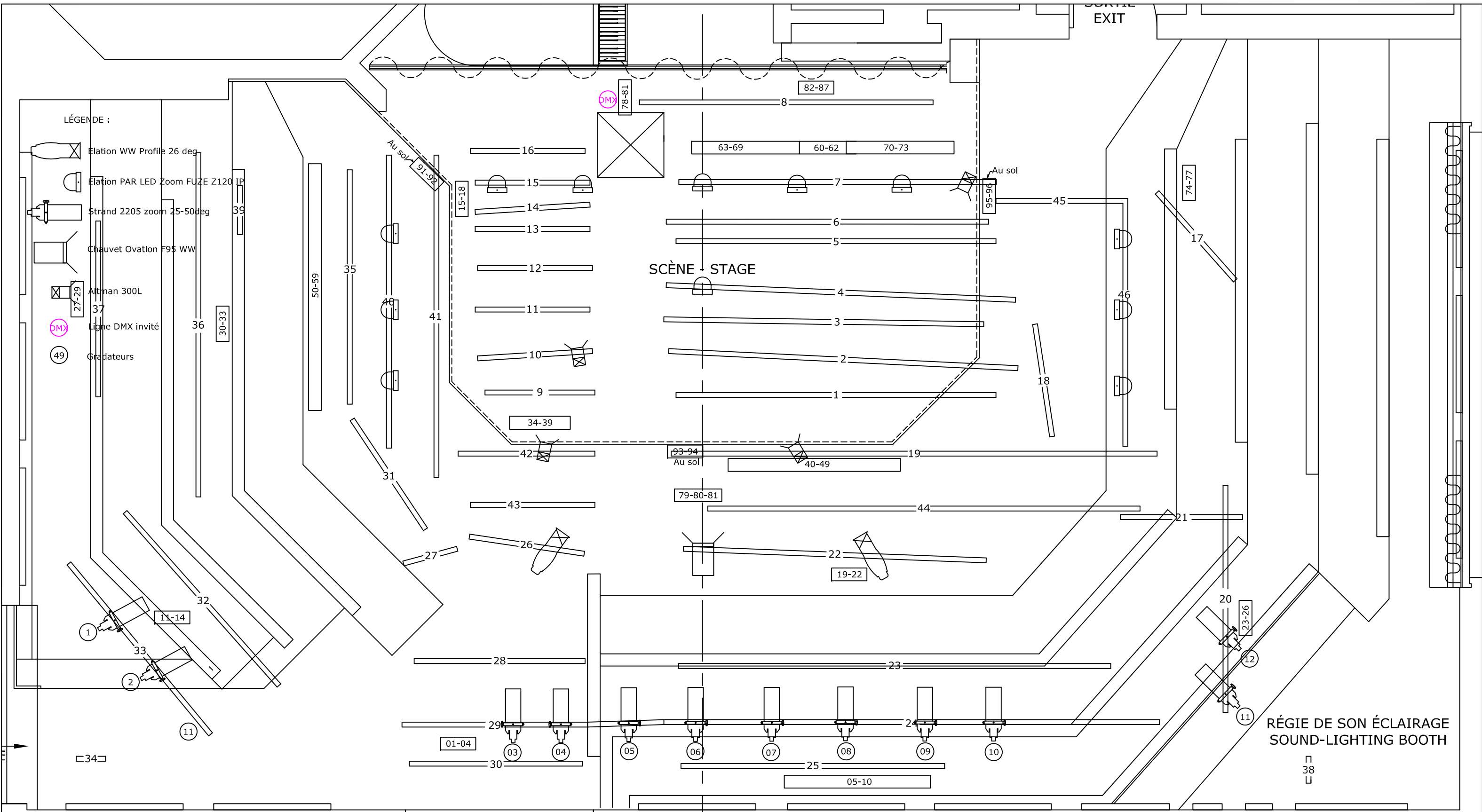
Date:

Mai / May 2021



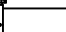
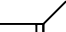
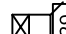

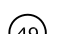
Format:

Architecturale / Impérial

11"x 17"



LÉGENDE :

-  Elation WW Profile 26 deg
-  Elation PAR LED Zoom FUZE Z120 IP
-  Strand 2205 zoom 25-50deg
-  Chauvet Ovation F95 WW
-  Altman 300L
-  Ligne DMX invité
-  Gradateurs

SORTIE-EXIT

RÉGIE DE SON ÉCLAIRAGE
SOUND-LIGHTING BOOTH



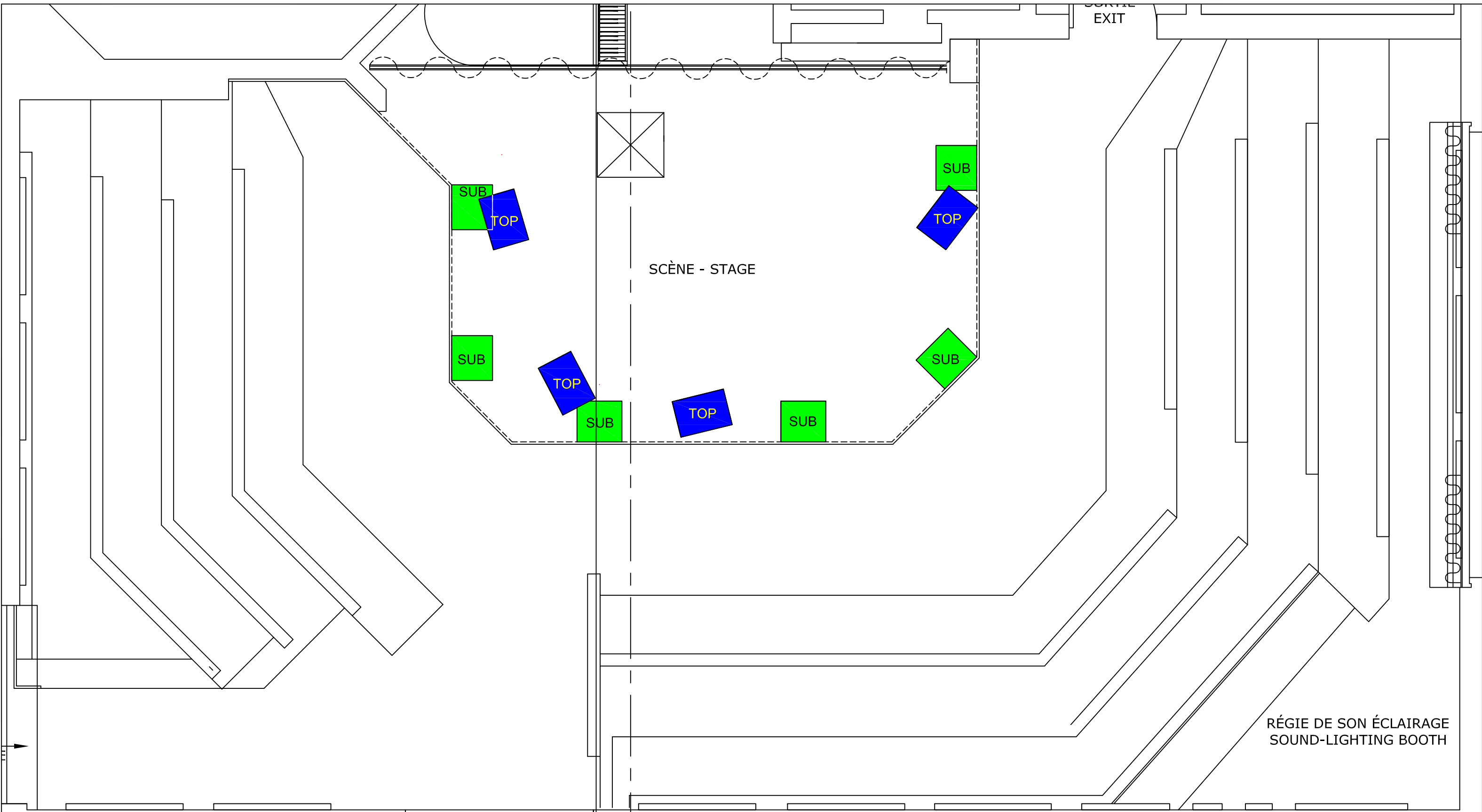
Salle / Location:

SALLE CLAUDE LÉVEILLÉE
175 rue Sainte-Catherine ouest, Montréal (Qc) H2X 1Y9

Titre /Title:

VUE EN PLAN
ÉCLAIRAGE - LIGHTING

Dessin /Drawing: PDA_SCL-AI	
Échelle / Scale: Voir règle-See ruler	Date: Mars / March 2023
Format: Architecturale / Impérial 11"x 17"	



Salle / Location:

SALLE CLAUDE LÉVEILLÉE
 175 rue Sainte-Catherine ouest, Montréal (Qc) H2X 1Y9

Titre /Title:

**VUE EN PLAN
 SON - SOUND**

Dessin /Drawing:
 PDA_SCL-AI

Échelle / Scale: Voir règle-See ruler
 Date: Mai / May 2021

Format:
 Architecturale / Impérial
 11"x 17"