

Updated - October 2024

The technical documentation of the venue that include stage, sound or lighting equipment is not part of the contract. Contact the technical department for an update on this

**General Informations**
**House**

<b>Seating</b>	Normal	
seating capacity for booking	747	
house seats	8	
Total	755	

<b>House dimensions</b>		
from house curtain to last row of orchestra	22,63m	74'-3"

**Artists entrance**
**1400 St.Urbain street**
**Loading dock**
**1410 St.Urbain street**

At street level, the stage of the theater is located two levels above the street.  
Sets, costumes and properties have to be transported to the stage by elevator.

**Loading platform dimensions**

width	9,58 m	31'-5"
length	13,11 m	43'-0"
height	3,05 m	10'-0"
height of platform	1,09 m	3'-7"

**Elevator**

<b>Maximum allowed weight</b>	6,8 T	15 000 lbs
width	3,48 m	11'-5"
length	7,77 m	25'-6"
height	3,48 m	11'-5"

**Elevator door**

width	2,97 m	9'-9"
length	3,00 m	9'-10"

Due to the location of elevator door, all objects ( sets, crates, etc...) must not exceed 23 feet (7 meters).

**Production office**

In the dressing room area (stage level) 1 person	<b>T02 005</b>
telephone :	514-285-4326

**Dressing rooms**
**Level 2, stage level**

1 person toilet - shower	loge 1
2 persons toilet - shower	loge 2
3 persons toilet - shower	loge 3
3 persons toilet - shower	loge 4
3 persons toilet - shower	loge 5
4 persons toilet - shower	loge 6

**Level 1**

3 persons - toilets and showers	Large dressing room
---------------------------------	---------------------

**Wardrobe room**

room located at stage level

length

width

3,96m	13'-0"
4,57m	15'-0"

1	sink
1	washing machine
1	dryer machine
1	flat iron
1	Jiffy steamer
2	quick change 8' x 8'

NB: wardrobe employees are members of IATSE local 863.

**Rehearsal rooms**

available upon request

**Stage**
**Stage description and dimensions**
**Wings and stage area capacities**
**Artists and technicians**

52

**Stage floor**

covered with black linoleum (battleship).

**Allowed load on the stage floor**

kg / m <sup>2</sup>	lbs/pi <sup>2</sup>
650	150

**(2 Movable panels) Proscenium opening**

maximum height

maximum width

intermediate width

minimal width

7,62m	25'-0"
16,15m	53'-6"
12,86m	42'-3"
9,45m	31'-0"

**Stage dimensions**

height

Total width

from center line to S.R. wall

from center line to S.L. wall

0,56 m	1'-10"
42,67m	140'-0"
22,86m	75'-0"
19,81m	65'-0"

**Total depth**

from house curtain to back wall

from house curtain to the edge of the stage

17,32m	56'-10"
15,70m	51'-8"
1,55m	5'-2"

**Height from stage floor to linesets**

clearance under fly gallery SR

clearance under fly gallery SL

10,52m	34'-4"
8,12m	26'-7"
8,12m	26'-7"

**Wing space, stage right**

width

length

12,40m	40'-8"
13,11m	43'-0"

**Wing space, stage left**

width

length

10,36m	34'-0"
10,54m	34'-7"

**Orchestra pit or vomitory**

width

length

3,96m	13'-0"
4,88m	16'-0"

**Rigging system**
**Fly system :**
**Single purchase counterweight system.**

\* operated from S.R. stage level

Counterweight system takes all the space of the wall at the stage level.

 pipe's length  
 number of sets \*  
 \* maximum loading capacity

20,42m	67'-0"
40	
635 Kg	1400 lbs

\* see the line plot for house hang.

 Subject to availability and billable:  
 Chain hoists 1T double-brake, 100', 4,8 m/min  
 Chain Hoist controller

 6  
 1

ChainMaster	BGV D8
-------------	--------

**Stage masking**
**House curtain**

Mauve velour, on traveller.

Electrically operated from stage right.

**Stage curtains** (black velvet)  
 legs standard opening  
 \* see the house hang

13,41m	44'-0"
--------	--------

**sets of legs**

6	
---	--

 width  
 height

6,10m	20'-0"
8,23m	27'-0"

 width  
 height

2	
3,05m	10'-0"
8,23m	27'-0"

 width  
 height

1	
4,57m	15'-0"
9,14m	30'-0"

**borders**

3	
---	--

 width  
 height

20,12m	66'-0"
3,66m	12'-0"

 width  
 height

4	
20,12m	66'-0"
3,05m	10'-0"

 width  
 height

2	
20,12m	66'-0"
2,44m	8'-0"

 width  
 height

2	
20,12m	66'-0"
1,83m	6'-0"

 width  
 height

2	
20,12m	66'-0"
1,22m	4'-0"

**full back drop**

1	
---	--

 width  
 height

20,12m	66'-0"
8,23m	27'-0'

**half backing** (traveler)

2	
---	--

 width  
 height

12,19m	40'-0"
8,23m	27'-0"

**Germans** (side curtain)

8	
---	--

 width  
 height

3,96m	13'-0"
7,92m	26'-0"

**Scrim**

 black  
 width  
 height

1	
21,34m	70'-0"
9,60m	31'-6"

**Cyclorama**

cream colored (plastic)

 width  
 height

1	
21,34m	70'-0"
8,00m	26'-0"

**Stage manager's desk**

The booth is located behind the hall high up on stage left.

<b>T04 090</b>
----------------

public paging system (bell), house sound  
telephone

514-285-4320
--------------

**Tables**

3	length	4'
3		6'
2		8'

**Ground support systems**

2	bases+pin	24" x 24" - 3 holes	on a dolly
1	adjustables 7'-12'	horizontal	
1	adjustable 6'-10'	vertical	

**Lift**

(battery ,ac)	1	Genie	AWP-36S
---------------	---	-------	---------

**Step ladders**

height:	2	1,22m	4'
	3	1,83m	6'
	2	2,43m	8'
Aluminum	1	2,43m	8'
Aluminum	1	3,04m	10'
Aluminum	2	3,66m	12'
	1	3,66m	12'
ladder	1	6,10m	20'

**Black drum carpets**

2	4' x 4'	carpet
2	4' x 8'	

**Platforms**

platforms	8	1,22 x 1,22 m	4' x 4'
legs	8	610 mm	24"
	22	406 mm	16"
	8	203 mm	8"
riser's wheels with break			2
riser's wheels without break			2
dress kit	4	406 mm x 2,44m	16" x 8'

**Touring companies (120 / 208 volts)**

* connection possibility when available	1	400 A	Stage Left
	1	400 A	Stage Left
	1	60 A	Upstage Right

**Follow spot**

follow spot	1	Robert Juliat	Victor	1,8kw
-------------	---	---------------	--------	-------

**Stage lighting control**

Main desk (in lighting booth)	1	ETC APEX 20	24,576 outputs	with MIDI, SMPTE, 2 Gadget DMX cards
Remote control	1	ETCpad		
Secondary desk (stage left)	1	ETC Ion Xe 20	12,288 outputs	
Backup system (fixed)	1	APEX Processeur	24,576 outputs	
Mobile EOS system	1	Laptop PC with gadget interface		
dimmers	438	STRAND	C-21 / 2.4 Kw	1 dimmer = 1 circuit Electronic soft patch
dimmers	48		C-21 / 6 Kw	

**Fixed equipment**

<b>Box boom</b>		<b>ETC - Source Four</b>	
Box boom # 1 (S.R. & S.L.)	16	19°	575 w
Box boom # 2 (S.R. & S.L.)	16	19°	575 w
Box boom # 3 (S.R. & S.L.)	16	10°	575 w
<b>Scoop bar</b>	16	Iris 2	1 kw

**Mobile Equipments**

<b>Bodies</b>	200	ETC	Source four	575 w
lenses available	14		10°	
	100		19°	
	70		26°	
	40		36°	
	12		50°	
	12		90°	
<b>Strand projectors</b>				
	12	fresnel 10"	12° x 51°	5 kw
	60	fresnel 6"	6° x 55°	1 kw
<b>Century Lighting projectors</b>				
	13	fresnel 6"	8° x 32°	750 w
	6	fresnel 3"	9° x 31°	125 w
<b>Altman projectors</b>	60	Par 64		1 kw
Bulbs available		Wide - Medium - Narrow - Very Narrow		
<b>Various</b>				
	65	Beamlite 12"	15° x 35°	1 kw
	79	Orion		1 kw

**Lighting accessories**

<b>Gobo holder</b>	25	ETC	type A	to assemble and disassemble
	25		type B	
	20		Strand	
<b>Iris</b>	15	ETC		
	3	Strand		
<b>Boom</b>	12	pipes	10'	
<b>floor base</b>	30	simple		
<b>Roscolux color filters</b>				

**Sound**
**Touring companies (120 / 208 volts)**

located stage left	60 A
--------------------	------

**Audio Console**

Main console	1	DiGiCo	Quantum 225
Main Rack (48 inputs/24 outputs)	1	DiGiCo	Dante Rack
Mobile Rack (16 inputs/8 outputs)	1	DiGiCo	Dante A168 stage
Remote Pad	1	Ipad	Wifi router

**House speaker system**
**Main System**

Top speaker Left - Center - Right (fixed)	3	Meyer	UPQ-1P
Floor speaker L + R (fixed)	2		UPJ-1P
Floor sub-bass speaker L + R (fixed)	2		600HP

**Surround System**

Lateral speaker (fixed)	4	Meyer	HMS-10
Overhead speaker (fixed)	4		UPJ-1P
Rear wall speaker (fixed)	4		UPJ-1P

**Stage SFX monitor**

speaker	4	Meyer	UPJr-XP
speaker	4		UP4-XP
speaker	8		MM-4 XP

Delayed system (for last rows)	Outline	Vegas24
--------------------------------	---------	---------

**Processors**

	1	Meyer	D-Mitri DCP
	1		D-Mitri DWTRX
	1		D-Mitri DAO-24
	1		D-Mitri DAI-24
	1		D-Mitri DAIO-168
	1		D-Mitri DAIO-816

**CueConsole**

transport module	1	Meyer	MS-CC2-TP
control module	1		MS-CC2-F16

**Microphones - D.I**

Wireless microphones	2	Shure UR4S	UR1-SM58
	2	Shure	UR2
	2	DPA	4060
	2	DPA	4088

Wired microphones	2	AKG	C-451 EB
	2	Shure	MX418/C
	2	Neumann	KMR-81i
	8	Audio-Technica	AT897
	3	Shure	SM-57
	2		SM-58S
	4		SM-58
	7		MX-393-C
	1	BSS	AR116 active
	2	Radial	J48 active
	2	Klark Teknik	LBB100 active
	2	Whirlwind	IMP-2

podium / goose neck 18"

switch on/off

## Communication

fix digital stations located in the theatre		CLEAR COM	HELIXNET
Main station (1 on stage, 1 in booth)	2	HMS-4X	
Belt-pack	4	HBP-2X	
Speaker station	2	HKB-2X	S-MOUNT

## Wireless intercom system

wireless intercom system	1	FreeSpeak II base II 2.4 GHz
belt pack	10	belt pack 4 channels

## TV monitor

mobile with table leg	1	Samsung	40"
fixed on the stage left and right wall	2	Samsung	40"

## Hearing-impaired system

DECADE	107,9 FM
--------	----------

## Théâtre JEAN-DUCEPPE

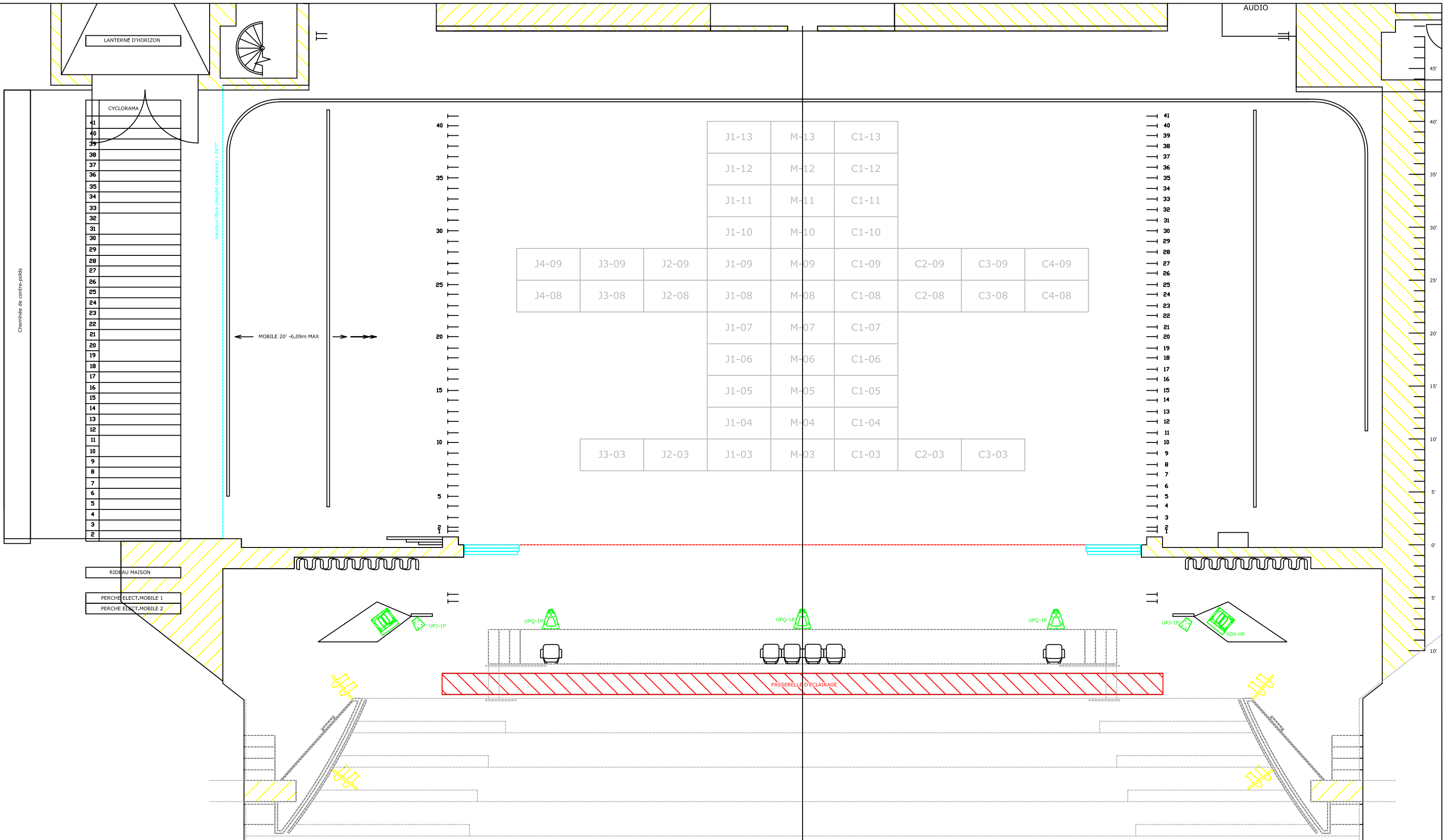
### ACCROCHAGE STANDARD DU THÉÂTRE / HOUSE HANG

mètres meters	pieds feet	équipe set number	description	description	poids / weight kg	lbs	grandeur pieds / feet	date
			porteuse motorisée #2	motorized pipe #2	454 Kg	1000lbs	67'-0" L	
			porteuse motorisé #1	motorized pipe #1	454kg	1000lbs	67'-0" L	
<i>Vers la salle</i>			↑					
<b>0,00</b>	<b>0'0"</b>							
<i>Vers la scène</i>			↓					
			rideau d'amiante *	asbestos curtain *				
			rideau-maison *	main house curtain *				
0,30	1"	1	frise	border			66'-0" L x 10'-0" H	2011
0,51	1'-8"	2	pendrillons**	legs**			20'-0" L x 27'-0" H	2011
0,79	2'-7"	3						
1,12	3'-8"	4						
1,40	4'-7"	5						
1,70	5'-7"	6						
2,03	6'-8"	7						
2,31	7'-7"	8						
2,64	8'-8"	9	frise	border			66'-0" L x 8'-0" H	2011
2,95	9'-8"	10	pendrillons**	legs**			20'-0" L x 27'-0" H	2011
3,23	10'-7"	11						
3,56	11'-8"	12						
3,84	12'-7"	13						
4,17	13'-8"	14						
4,45	14'-7"	15						
4,78	15'-8"	16						
5,05	16'-7"	17	frise	border			66'-0" L x 10'-0" H	2011
5,38	17'-8"	18	pendrillons**	legs**			20'-0" L x 27'-0" H	2011
5,66	18'-7"	19						
5,99	19'-8"	20						
6,27	20'-7"	21						
6,60	21'-8"	22						
6,88	22'-7"	23						
7,21	23'-8"	24						
7,49	24'-7"	25						
7,82	25'-8"	26	frise	border			66'-0" L x 10'-0" H	2011
8,13	26'-8"	27	pendrillons**	legs**			20'-0" L x 27'-0" H	2011
8,43	27'-8"	28						
8,74	28'-8"	29						
9,04	29'-8"	30						
9,35	30'-8"	31						
9,65	31'-8"	32						
9,96	32'-8"	33						
10,26	33'-8"	34	frise	border			66'-0" L x 12'-0" H	2011
10,57	34'-8"	35	pendrillons**	legs**			20'-0" L x 27'-0" H	2011
10,87	35'-8"	36						
11,18	36'-8"	37						
11,48	37'-8"	38						
11,79	38'-8"	39	tulle noir	black scrim			70'-0" L x 31'-6" H	
12,07	39'-7"	40	frise	border			66'-0" L x 12'-0" H	2011
12,37	40'-7"	41	demi-fond (patience)	half backing (traveler)			40'-0" L x 27'-0" H	2011
12,64	41'-6"	n/a	cyclorama (patience)	cyclorama (traveler)			70'-0" L x 26'-0" H	

\* Permanent

\*\*Ouverture des pendrillons = 44' / standard opening = 44'





Salle / Location:

**THÉÂTRE JEAN DUCEPPE**  
 175, rue Sainte -Catherine ouest, Montréal (Qc) H2X 1Z8

Titre /Title:

VUE DE DESSUS SCÈNE  
 STAGE TOP VIEW

Dessin /Drawing:  
 JD-salle&coupe.dwg

Échelle / Scale: Voir règle - See ruler Date: Oct / October '17

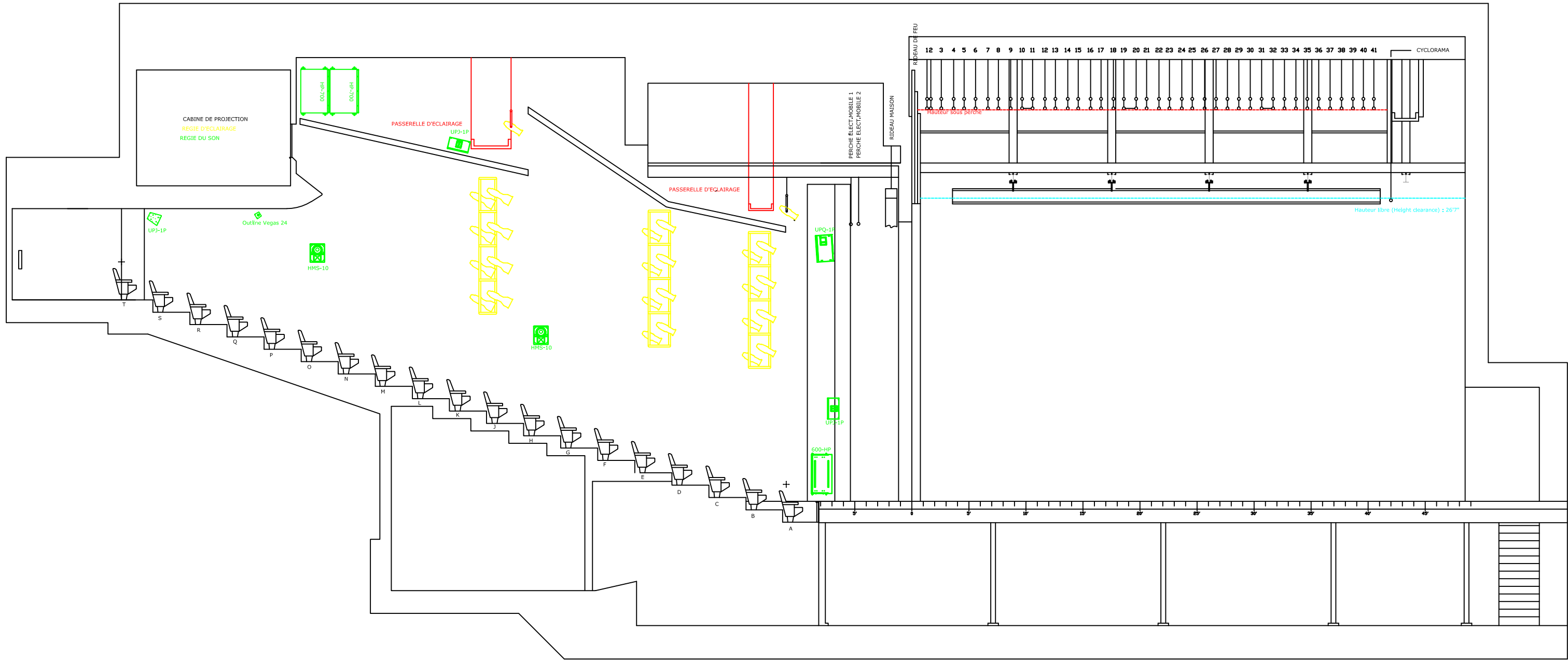
Format:  
 Architecturale / Impérial  
 11"x 17"

PERCHIE ELECT.MOBILE 1  
PERCHIE ELECT.MOBILE 2

RIDEAU MAISON

41	CYCLORAMA
40	
39	
38	
37	
36	
35	
34	
33	
32	
31	
30	
29	
28	
27	
26	
25	
24	
23	
22	
21	
20	
19	
18	
17	
16	
15	
14	
13	
12	
11	
10	
9	
8	
7	
6	
5	
4	
3	
2	

LANTIERNE D'HORIZON



Salle / Location:

**THÉÂTRE JEAN DUCEPPE**  
175, rue Sainte -Catherine ouest, Montréal (Qc) H2X 1Z8

Titre /Title:

**COUPE  
SECTION**

Dessin /Drawing:

JD-coupe de salle.dwg

Échelle / Scale:

Voir règle - See ruler

Date:

Fev / February '19

Format:

Architecturale / Impérial

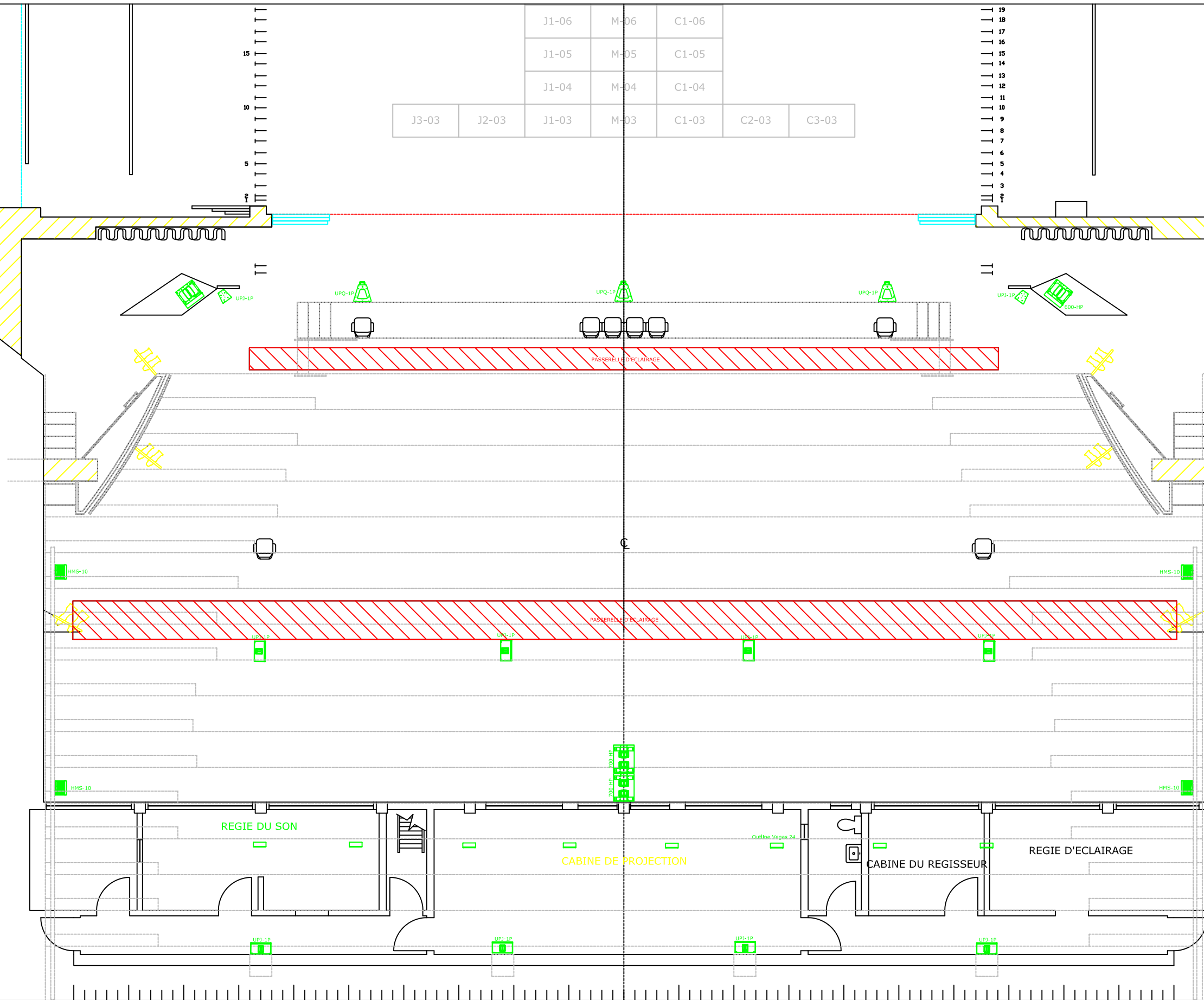
11"x 17"

20
19
18
17
16
15
14
13
12
11
10
9
8
7
6
5
4
3
2

J3-03	J2-03	J1-03	M-03	C1-03	C2-03	C3-03
J1-06	M-06	C1-06				
J1-05	M-05	C1-05				
J1-04	M-04	C1-04				

19
18
17
16
15
14
13
12
11
10
9
8
7
6
5
4
3
2

RIDEAU MAISON  
 PERCHE ELECT.MOBILE 1  
 PERCHE ELECT.MOBILE 2



Salle / Location:

**THÉÂTRE JEAN DUCEPPE**  
 175, rue Sainte -Catherine ouest, Montréal (Qc) H2X 1Z8

Titre / Title:

VUE DE DESSUS - Sonorisation  
 House Sound System - TOP VIEW

Dessin / Drawing: JD-salle&coupe.dwg  
 Échelle / Scale: Voir règle - See ruler  
 Date: Fev / February '19  
 Format: Architecturale / Impérial  
 11"x 17"