



Place des Arts
Québec

THÉÂTRE JEAN-DUCEPPE

Updated - September 2020

Covid-19 Important note concerning the information's registered in this technical rider.

During the pandemic and until further notice; the capacities of all backstage rooms and spaces have been lowered to favor physical distancing and are posted on doors end entrances of each of these spaces.

The technical documentation of the venue that include stage, sound or lighting equipment is not part of the contract. Contact the technical department for an update on this document.

Informations Générales / General Informations

House

	Normal	Reduced
Seating		
seating capacity for booking	747	177
house seats	8	-
Total	755	177
House dimensions		
from house curtain to last row of orchestra	22,63m	74'-3"

Artists entrance

1400 St.Urbain street

Loading dock

1410 St.Urbain street

At street level, the stage of the theater is located two levels above the street.
Sets, costumes and properties have to be transported to the stage by elevator.

Loading platform dimensions		
width	9,58 m	31'-5"
length	13,11 m	43'-0"
height	3,05 m	10'-0"
height of platform	1,09 m	3'-7"
Elevator		
Maximum allowed weight	6,8 T	15 000 lbs
width	3,48 m	11'-5"
length	7,77 m	25'-6"
height	3,48 m	11'-5"
Elevator door		
width	2,97 m	9'-9"
length	3,00 m	9'-10"

Due to the location of elevator door, all objects (sets, crates, etc...) must not exceed 23 feet (7 meters).

Production office

In the dressing room area (stage level) 1 person
telephone :

T02 005
514-285-4326

Dressing rooms

Level 2, stage level	
1 person toilet - shower	loge 1
1 person toilet - shower	loge 2
1 person toilet - shower	loge 3
1 person toilet - shower	loge 4
1 person toilet - shower	loge 5
1 person toilet - shower	loge 6
Level 1	
3 persons - toilets and showers	Large dressing room



Wardrobe room

room located at stage level
length
width

3,96m	13'-0"
4,57m	15'-0"

1	sink
1	washing machine
1	dryer machine
1	flat iron
1	Jiffy steamer
2	quick change 8' x 8'

NB: wardrobe employees are members of IATSE local 863.

Rehearsal rooms

available upon request

Stage

Stage description and dimensions

Wings and stage area capacities

Artists and technicians

52

Stage floor

covered with black linoleum (battleship).

Allowed load on the stage floor

kg / m ²	lbs/pi ²
650	150

(2 Movable panels) Proscenium opening

maximum height
maximum width
intermediate width
minimal width

7,62m	25'-0"
16,15m	53'-6"
12,86m	42'-3"
9,45m	31'-0"

Stage dimensions

height
Total width
from center line to S.R. wall
from center line to S.L. wall

0,56 m	1'-10"
42,67m	140'-0"
22,86m	75'-0"
19,81m	65'-0"

Total depth

from house curtain to back wall
from house curtain to the edge of the stage

17,32m	56'-10"
15,70m	51'-8"
1,55m	5'-2"

Height from stage floor to linesets

clearance under fly gallery SR
clearance under fly gallery SL

10,52m	34'-4"
8,12m	26'-7"
8,12m	26'-7"

Wing space, stage right

width
length

12,40m	40'-8"
13,11m	43'-0"

Wing space, stage left

width
length

10,36m	34'-0"
10,54m	34'-7"

Orchestra pit or vomitory

width
length

3,96m	13'-0"
4,88m	16'-0"

Rigging system

Fly system :

Single purchase counterweight system.

* operated from S.R. stage level

Counterweight system takes all the space of the wall at the stage level.

pipe's length
number of sets *
* maximum loading capacity

20,42m	67'-0"
40	
635 Kg	1400 lbs

* see the line plot for house hang.

Subject to availability and billable:
Chain hoists 1T double-brake, 100', 4,8 m/min
Chain Hoist controller

6	ChainMaster	BGV D8
1		



Stage masking

House curtain	Mauve velour, on traveller. Electrically operated from stage right.
Stage curtains (black velvet) legs standard opening * see the house hang	13,41m 44'-0"
sets of legs	6
width	6,10m 20'-0"
height	8,23m 27'-0"
	2
width	3,05m 10'-0"
height	8,23m 27'-0"
	1
width	4,57m 15'-0"
height	9,14m 30'-0"
borders	3
width	20,12m 66'-0"
height	3,66m 12'-0"
	4
width	20,12m 66'-0"
height	3,05m 10'-0"
	2
width	20,12m 66'-0"
height	2,44m 8'-0"
	2
width	20,12m 66'-0"
height	1,83m 6'-0"
	2
width	20,12m 66'-0"
height	1,22m 4'-0"
full back drop	1
width	20,12m 66'-0"
height	8,23m 27'-0"
half backing (traveler)	2
width	12,19m 40'-0"
height	8,23m 27'-0"
Germans (side curtain)	8
width	3,96m 13'-0"
height	7,92m 26'-0"
Scrim	
black	1
width	21,34m 70'-0"
height	9,60m 31'-6"
Cyclorama	
cream colored (plastic)	1
width	21,34m 70'-0"
height	8,00m 26'-0"

Stage manager's desk

The booth is located behind the hall high up on stage left.

T04 090

public paging system (bell), house sound
telephone

514-285-4320

Tables

3 3 2	length	4'
		6'
		8'



Place des Arts
Québec

THÉÂTRE JEAN-DUCEPPE

Ground support systems

2	bases+pin	24" x 24" - 3 holes	on a dolly
1	adjustables 7'-12'	horizontal	
1	adjustable 6'-10'	vertical	

Lift

(battery ,ac)	1	Genie	AWP-36S
---------------	---	-------	---------

Step ladders

height:	2	1.22m	4'
	3	1.83m	6'
	2	2.43m	8'
Aluminum	1	2.43m	8'
Aluminum	1	3.04m	10'
Aluminum	2	3.66m	12'
	1	3.66m	12'
ladder	1	6.10m	20'

Black drum carpets

2	4' x 4'	carpet
2	4' x 8'	



Lighting

Touring companies (120 / 208 volts)

* connection possibility when available	1	400 A	
	1	400 A	
	1	100 A	

Follow spot

follow spot	1	Robert Juliat	Victor	1,8kw
-------------	---	---------------	--------	-------

Stage lighting control

console located behind the hall high up on stage left	1	STRAND	Light Palette VL	
1 dimmer = 1 circuit				
dimmers	438	STRAND	C-21 / 2.4 Kw	
dimmers	48		C-21 / 6 Kw	
Electronic soft patch				

Fixed equipment

Box boom		ETC - Source Four		
Box boom # 1 (S.R. & S.L.)	16	19°		575 w
Box boom # 2 (S.R. & S.L.)	16	19°		575 w
Box boom # 3 (S.R. & S.L.)	16	10°		575 w
Scoop bar	16	Iris 2		1 kw

Mobile Equipments

Bodies	200		Source four	575 w
lenses available	14	ETC	10°	
	100		19°	
	70		26°	
	40		36°	
	12		50°	
	12		90°	
Strand projectors				
	20	zoom SL	15° x 32°	575 w
	12	fresnel 10"	12° x 51°	5 kw
	60	fresnel 6"	6° x 55°	1 kw
Century Lighting projectors				
	11	fresnel 6"	8° x 32°	750 w
	6	fresnel 3"	9° x 31°	125 w
Altman projectors	60	Par 64		1 kw
Bulbs available		Wide - Medium - Narrow - Very Narrow		
Various				
	65	Beamlite 12"	15° x 35°	1 kw
	79	Orion		1 kw

Lighting accessories

Gobo holder	25	ETC	type A
	25		type B
	20	Strand	type B
Iris	15	ETC	
	3	Strand	
floor base	30	simple	
Roscolux color filters			



Place des Arts
Québec

THÉÂTRE JEAN-DUCEPPE

Sound

Touring companies (120 / 208 volts)

located stage left

60 A

Système de salle - House speaker system

Main System

Top speaker Left - Center - Right (fixed)	3	Meyer	UPQ-1P
Floor speaker L + R (fixed)	2		UPJ-1P
Floor sub-bass speaker L + R (fixed)	2		600HP

Surround System

Lateral speaker (fixed)	4	Meyer	HMS-10
Overhead speaker (fixed)	4		UPJ-1P
Rear wall speaker (fixed)	4		UPJ-1P

Stage SFX monitor

speaker	4	Meyer	UPJr-XP
speaker	4		UP4-XP
speaker	8		MM-4_XP

Delayed system (for last rows)

Outline	Vegas24
---------	---------

Processors

	1	Meyer	D-Mitri DCP
	1		D-Mitri DWTRX
	1		D-Mitri DAO-24
	1		D-Mitri DAI-24
	1		D-Mitri DAI0-168
	1		D-Mitri DAI0-816

CueConsole

transport module	1	Meyer	MS-CC2-TP
control module	1		MS-CC2-F16

Microphones - D.I

Wireless microphones	2	Shure UR4S	UR1-SM58
	2	Shure	UR2
	2	DPA	4060
	2	DPA	4088

Wired microphones	2	AKG	C-451 EB
	2	Shure	MX418/C
	2	Neumann	KMR-81i
	1	Neumann	TLM-103
	2	Sennheiser	MKH 60
	2	Sennheiser	MKH 416
	1	Shure	SM-57
	2		SM-58S
	6		MX-393-C
	2	Klark Teknik	LBB100 active
	2	Whirlwind	IMP-2

podium / goose neck 18"

Sound studio only
House sound only



Place des Arts
Québec ::

THÉÂTRE JEAN-DUCEPPE

Communication

fix digital stations located in the theatre
Main station (1 on stage, 1 on stage manager local) 2
Belt-pack 4
Speaker station 2

CLEAR COM	HELIXNET
HMS-4X	
HBP-2X	
HKB-2X	S-MOUNT

Wireless intercom system

wireless intercom system (Transmit) 1
belt pack (Receiver) 8

	TELEX E88
--	-----------

TV monitor

mobile with table leg 1
fixed on the stage left and right wall 2

Samsung	40"
Samsung	40"

Hearing-impaired system

DECADE	107,9 FM
--------	----------

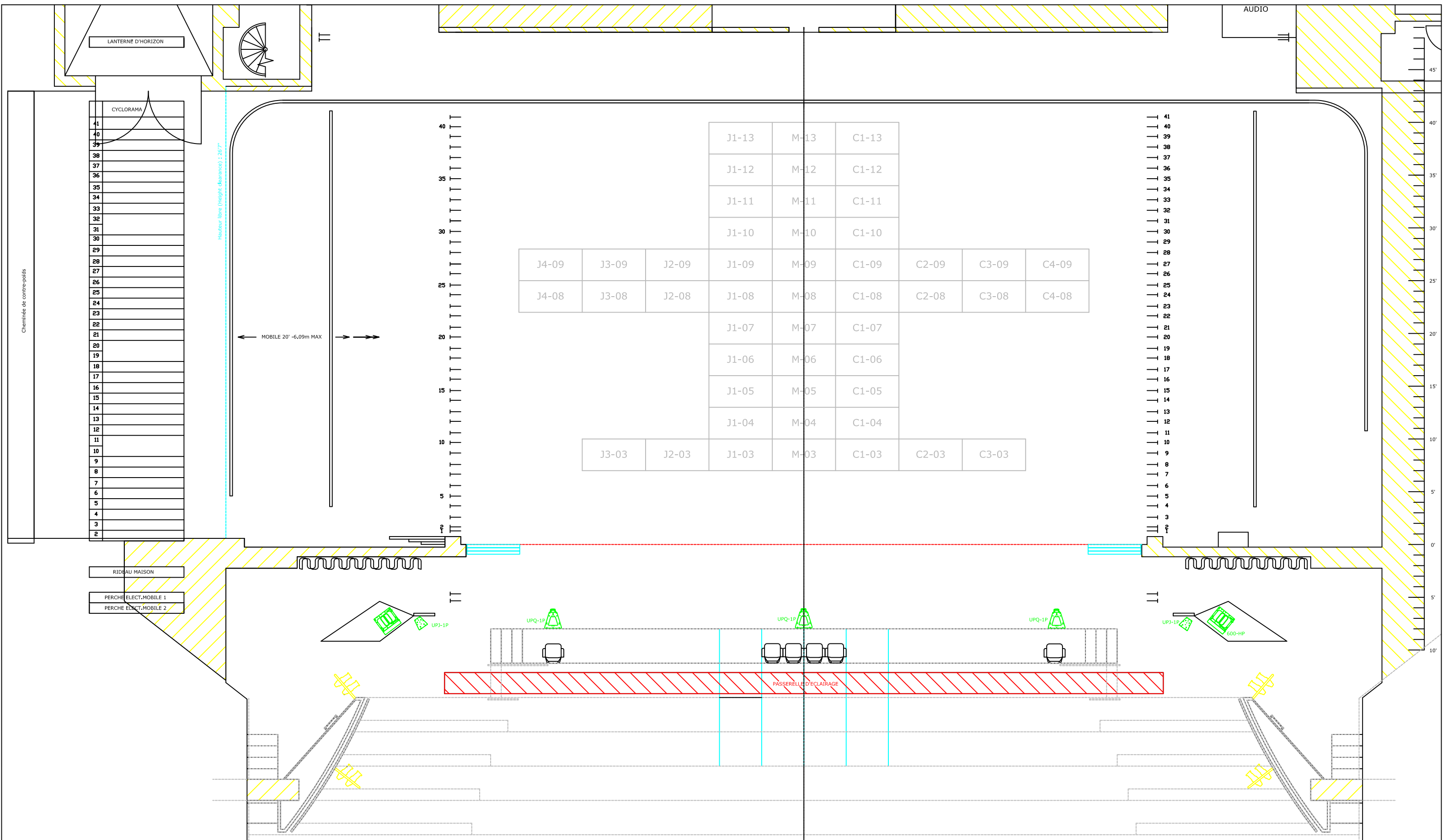
Théâtre JEAN-DUCEPPE

ACCROCHAGE STANDARD DU THÉÂTRE / HOUSE HANG

mètres meters	pieds feet	équipe set number	description	description	poids / weight kg	lbs	grandeur pieds / feet	date
			porteuse motorisée #2	motorized pipe #2	454 Kg	1000lbs	67'-0" L	
			porteuse motorisé #1	motorized pipe #1	454kg	1000lbs	67'-0" L	
<i>Vers la salle</i>			↑					
0,00	0'0"							
<i>Vers la scène</i>			↓					
			rideau d'amiante *	asbestos curtain *				
			rideau-maison *	main house curtain *				
0,30	1"	1	frise	border			66'-0" L x 10'-0" H	2011
0,51	1'-8"	2	pendrillons**	legs**			20'-0" L x 27'-0" H	2011
0,79	2'-7"	3						
1,12	3'-8"	4						
1,40	4'-7"	5						
1,70	5'-7"	6						
2,03	6'-8"	7						
2,31	7'-7"	8						
2,64	8'-8"	9	frise	border			66'-0" L x 8'-0" H	2011
2,95	9'-8"	10	pendrillons**	legs**			20'-0" L x 27'-0" H	2011
3,23	10'-7"	11						
3,56	11'-8"	12						
3,84	12'-7"	13						
4,17	13'-8"	14						
4,45	14'-7"	15						
4,78	15'-8"	16						
5,05	16'-7"	17	frise	border			66'-0" L x 10'-0" H	2011
5,38	17'-8"	18	pendrillons**	legs**			20'-0" L x 27'-0" H	2011
5,66	18'-7"	19						
5,99	19'-8"	20						
6,27	20'-7"	21						
6,60	21'-8"	22						
6,88	22'-7"	23						
7,21	23'-8"	24						
7,49	24'-7"	25						
7,82	25'-8"	26	frise	border			66'-0" L x 10'-0" H	2011
8,13	26'-8"	27	pendrillons**	legs**			20'-0" L x 27'-0" H	2011
8,43	27'-8"	28						
8,74	28'-8"	29						
9,04	29'-8"	30						
9,35	30'-8"	31						
9,65	31'-8"	32						
9,96	32'-8"	33						
10,26	33'-8"	34	frise	border			66'-0" L x 12'-0" H	2011
10,57	34'-8"	35	pendrillons**	legs**			20'-0" L x 27'-0" H	2011
10,87	35'-8"	36						
11,18	36'-8"	37						
11,48	37'-8"	38						
11,79	38'-8"	39	tulle noir	black scrim			70'-0" L x 31'-6" H	
12,07	39'-7"	40	frise	border			66'-0" L x 12'-0" H	2011
12,37	40'-7"	41	demi-fond (patience)	half backing (traveler)			40'-0" L x 27'-0" H	2011
12,64	41'-6"	n/a	cyclorama (patience)	cyclorama (traveler)			70'-0" L x 26'-0" H	

* Permanent

**Ouverture des pendrillons = 44' / standard opening = 44'



Cheminée de contre-poids

AUDIO

LANterne D'HORIZON

CYCLORAMA

- 41
- 40
- 39
- 38
- 37
- 36
- 35
- 34
- 33
- 32
- 31
- 30
- 29
- 28
- 27
- 26
- 25
- 24
- 23
- 22
- 21
- 20
- 19
- 18
- 17
- 16
- 15
- 14
- 13
- 12
- 11
- 10
- 9
- 8
- 7
- 6
- 5
- 4
- 3
- 2

Hauteur libre (Height clearance) : 26'7"

MOBILE 20' - 6.09m MAX

RIDEAU MAISON

PERCHE ELECT. MOBILE 1

PERCHE ELECT. MOBILE 2

- 40
- 35
- 30
- 25
- 20
- 15
- 10
- 5
- 0

- 41
- 40
- 39
- 38
- 37
- 36
- 35
- 34
- 33
- 32
- 31
- 30
- 29
- 28
- 27
- 26
- 25
- 24
- 23
- 22
- 21
- 20
- 19
- 18
- 17
- 16
- 15
- 14
- 13
- 12
- 11
- 10
- 9
- 8
- 7
- 6
- 5
- 4
- 3
- 2
- 0
- 5'
- 10'

J4-09	J3-09	J2-09	J1-09	M-09	C1-09	C2-09	C3-09	C4-09
J4-08	J3-08	J2-08	J1-08	M-08	C1-08	C2-08	C3-08	C4-08

J3-03	J2-03	J1-03	M-03	C1-03	C2-03	C3-03
-------	-------	-------	------	-------	-------	-------

J1-13	M-13	C1-13
J1-12	M-12	C1-12
J1-11	M-11	C1-11
J1-10	M-10	C1-10
J1-07	M-07	C1-07
J1-06	M-06	C1-06
J1-05	M-05	C1-05
J1-04	M-04	C1-04

PASSERELLE D'ÉCLAIRAGE



Salle / Location:

THÉÂTRE JEAN DUCEPPE
175, rue Sainte -Catherine ouest, Montréal (Qc) H2X 1Z8

Titre /Title:

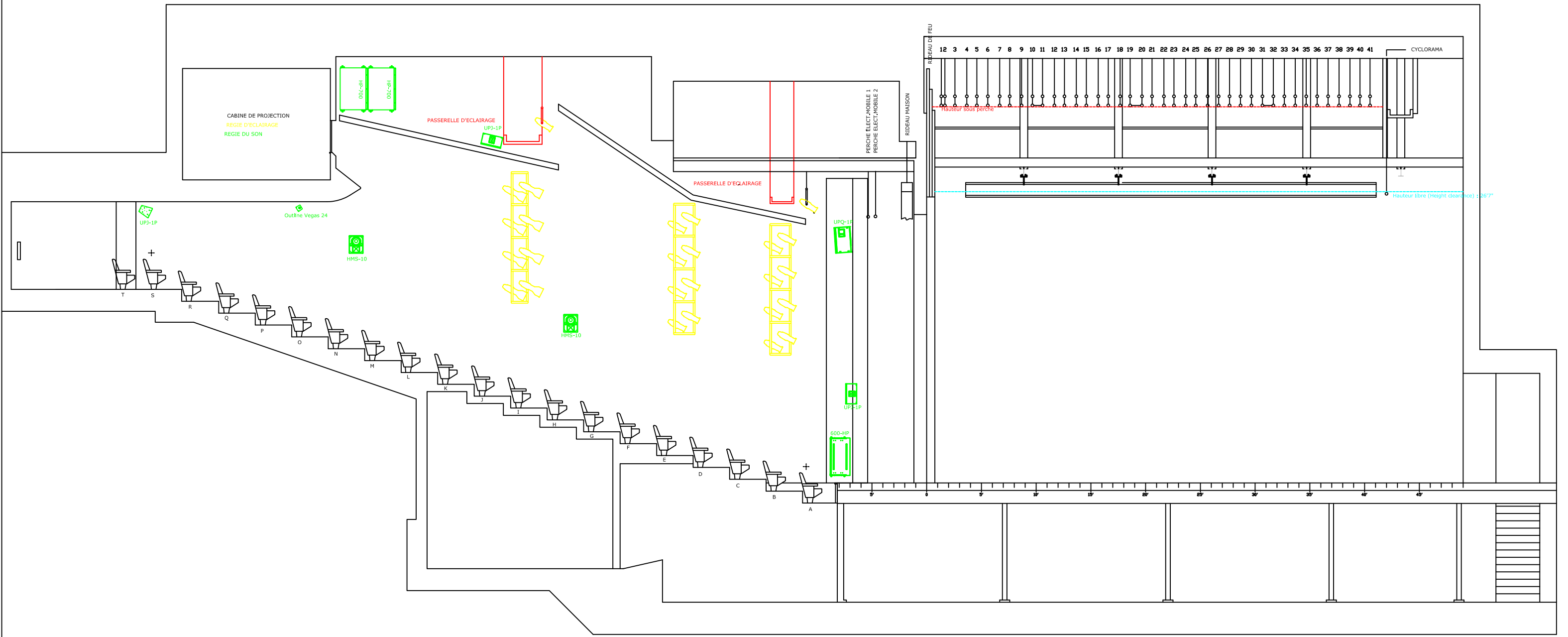
VUE DE DESSUS SCÈNE
STAGE TOP VIEW

Dessin /Drawing: JD-salle&coupe.dwg
Échelle / Scale: Voir règle - See ruler Date: Oct / October '17
Format: Architecturale / Impérial
11"x 17"

RIDEAU MAISON
 PERCHE ELECT.MOBILE 1
 PERCHE ELECT.MOBILE 2

1
2
3
4
5
6
7
8
9
10
11
12
13
14
15
16
17
18
19
20
21
22
23
24
25
26
27
28
29
30
31
32
33
34
35
36
37
38
39
40
41

LANTERNE D'HORIZON
 CYCLORAMA



Salle / Location:

THÉÂTRE JEAN DUCEPPE
 175, rue Sainte-Catherine ouest, Montréal (Qc) H2X 1Z8

Titre / Title:

COUPE SECTION

Dessin / Drawing: JD-coupe de salle.dwg	
Échelle / Scale: Voir règle - See ruler	Date: Janv / January '19
Format: Architecturale / Impérial 11"x 17"	

19
18
17
16
15
14
13
12
11
10
9
8
7
6
5
4
3
2

15
10
5
0

J1-06	M-06	C1-06			
J1-05	M-05	C1-05			
J1-04	M-04	C1-04			
J3-03	J2-03	J1-03	M-03	C1-03	C2-03
				C3-03	

17
16
15
14
13
12
11
10
9
8
7
6
5
4
3
2

15'
10'
5'
0'
5'
10'

RIDEAU MAISON
PERCHE ELECT.MOBILE 1
PERCHE ELECT.MOBILE 2

